

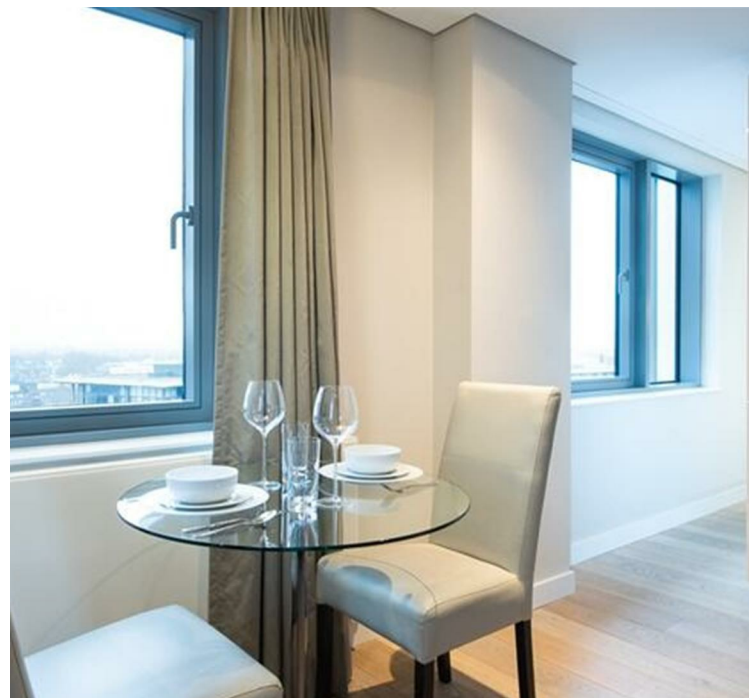
The image shows a bright, modern apartment interior. In the foreground, there is a light-colored sofa with a glass coffee table holding a vase of green flowers. To the right, a dining area features a round glass table with two white chairs, set with glasses and plates. A large window with gold-colored curtains is in the background, offering a view of a brick building. A flat-screen TV is mounted on the wall. The ceiling has a large, white, circular light fixture and recessed lights. The floor is made of light-colored wood.

STURGES
LONDON

Merchant Square
£3,445 Per calendar month



- 12th Floor apartment with views over the Quay
- Include CCTV, Video Entry, Concierge and Porter
- Stunning entertaining space
- Ample storage space
- Excellent Transport links
- Available Furnished or Unfurnished
- Private underground parking space



STURGES
LONDON



, London

We are pleased to offer this stunning south facing interior designed apartment, set within the heart of the Paddington Basin and close to the popular West End Quay.

The apartment is situated on the twelfth floor of this prestigious building which features Concierge, lift service and secure underground parking.

The stunning apartment comprises spacious living and entertaining space with a beautiful reception room with superb views, a superb modern fitted open plan kitchen, a good size one bedroom, one bathroom plus ample storage space.

The apartment offers easy access to superb transport links such as Paddington Train Station (Elizabeth line, Bakerloo, Hammersmith & City, Circle, District lines and Heathrow Express) Edgware Road (Circle, District and Bakerloo lines).

Local Authority:

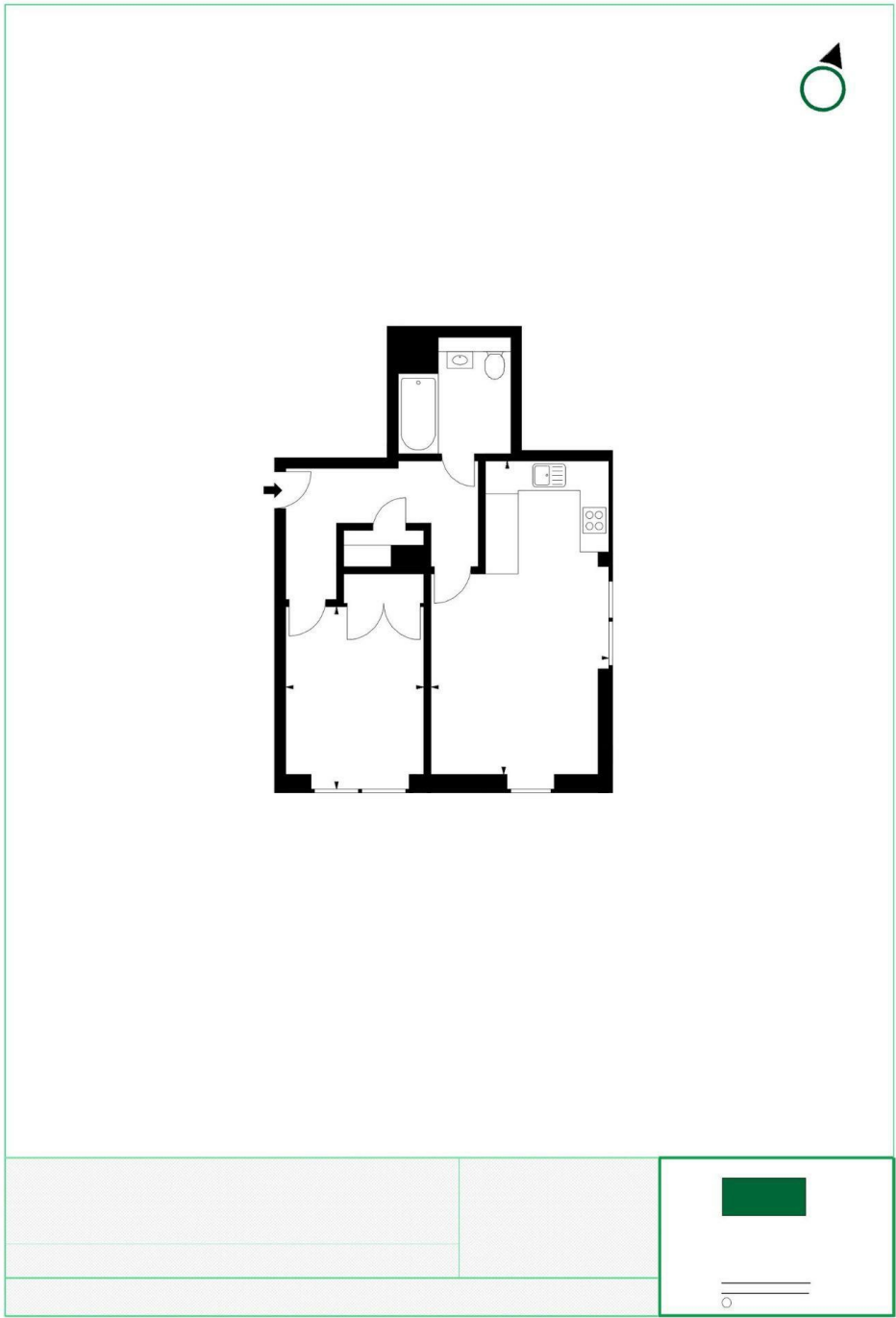
Council Tax Band: E


Lease: Add text here

Service Charges: Add text here

Ground Rent: Add text here

STURGES
LONDON



Energy Efficiency Rating		
	Current	Potential
Very energy efficient - lower running costs		
(92 plus) A		
(81-91) B		
(69-80) C		
(55-68) D		
(39-54) E		
(21-38) F		
(1-20) G		
Not energy efficient - higher running costs		
England & Wales		EU Directive 2002/91/EC 

For more information, please contact:

(Tel) 020 3393 2002
(Email) hello@sturgeslondon.co.uk

668 Fulham Road, Parsons Green, London, SW6 5RX

sturgeslondon.co.uk

Agents Note: Whilst every care has been taken to prepare these particulars, they are for guidance purposes only. All measurements are approximate and for general guidance purposes only and whilst every care has been taken to ensure accuracy, they should not be relied upon and potential buyers/tenants are advised to recheck the measurements.