



Price
£305,000

Leasehold

2x  1x  1x 

**Park Court, Haselmere
Close, Wallington,
Surrey, SM6**

OVER 60?

Secure this property
for up to **59% less!**

cubitt & west
Helping you move forwards



Main features

- First floor maisonette situated in a cul-de-sac
- Good sized bedrooms
- Spacious accommodation
- Private rear garden
- Good transport links from Wallington station, local bus routes and within the catchment area for excellent schools

Accommodation

FIRST FLOOR

Entrance Hall

Living Room: 15'7 x 10'8 (4.75m x 3.25m)

Kitchen: 13'2 x 7'1 (4.02m x 2.16m)

Bedroom 1: 13'0 x 11'3 (3.97m x 3.43m)

Bedroom 2: 13'5 x 10'0 (4.09m x 3.05m)

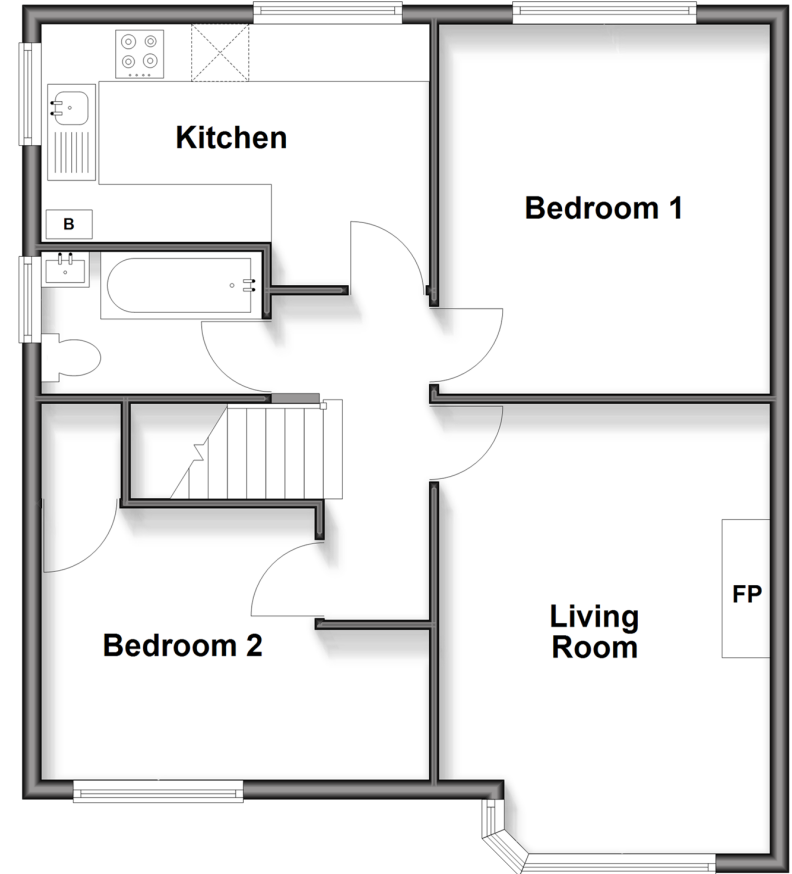
Bathroom

OUTSIDE

Rear Garden

First Floor

Approx. 61.7 sq. metres (664.2 sq. feet)



Call Wallington - 020 8647 0011 ■ cubittandwest.co.uk

- Legal advice should be taken to verify fixtures/fittings, planning, alterations and/or lease details
- Appliances & services are untested, dimensions are approximate and floor plans are not to scale
- Through a Homewise Home For Life Plan people aged 60+ can secure this property for up to 50% less, by purchasing a Lifetime Lease.



22117950/20250919/NL/NL