



## Seely Road, SW17

### £600,000

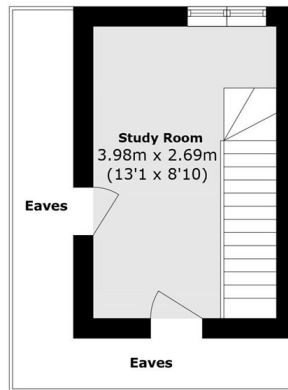
A two bedroom family home in ABC roads, offering well-balanced living and entertaining space arranged over three floors. The ground floor comprises a bright and spacious open-plan kitchen/reception room and WC, with ample space for dining flooded with natural light and providing direct rear access to a private garden. Over the first and top floors there are two bedrooms, a study room and a three piece family bathroom.

Seely Road is a desirable residential street occupying great proximity to the many shops, bars and restaurants of Tooting High Street and sits on the doorstep of Furzedown Village with Tooting Railway & Broadway Underground stations nearby.

### Features

- Two Bedrooms
- Study
- Large Garden
- Open-Plan Kitchen/Reception
- ABC Roads
- Chain Free

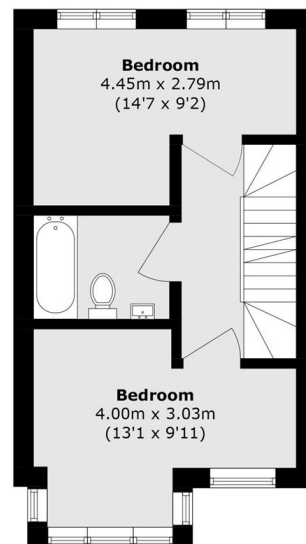
# Seely Road, London, SW17



**Second Floor**



**Ground Floor**



**First Floor**

Total area (approx.): 79.6 sq. m (856.8 sq. ft)  
(Excluding Eaves)

## Dexters

Tooting  
48 Tooting High Street  
London  
SW17 0RG  
Sales  
020 8545 8582

Energy Rating: C. We aim to make our particulars both accurate and reliable. However they are not guaranteed; nor do they form part of an offer or contract. If you require clarification on any points then please contact us, especially if you're traveling some distance to view. Please note that appliances and heating systems have not been tested and therefore no warranties can be given as to their good working order.

 **RICS** | Regulated  
Estate Agent  
and Letting Agent

[dexters.co.uk](https://www.dexters.co.uk)