



Princess Road, North
Maida Vale, NW6

Asking Price £450,000



Princess Road, North Maida Vale, NW6

Asking Price £450,000



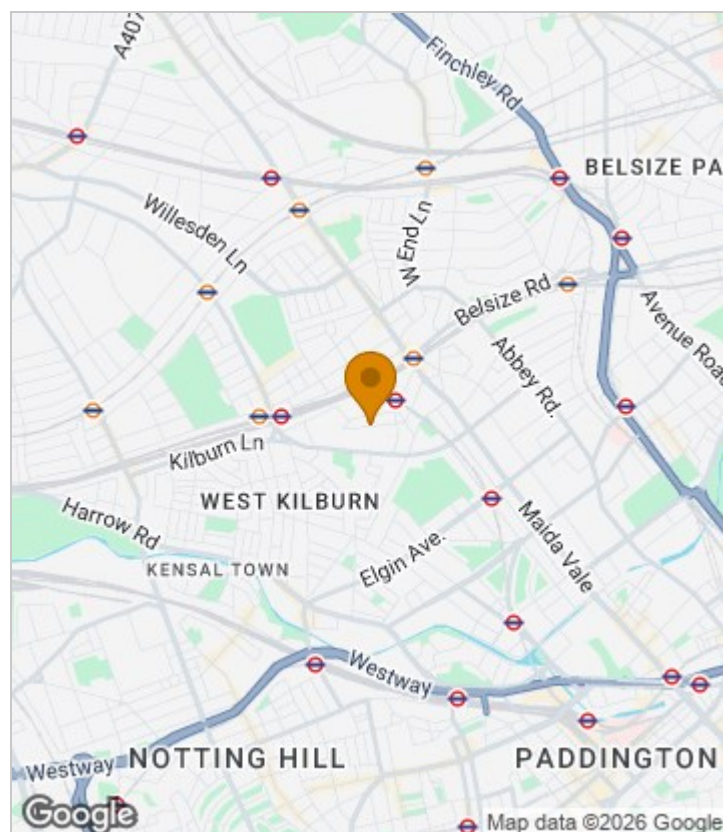
Summary Description

A delightful one bedroom raised ground floor conversion flat set within this attractive period property on an attractive residential road in the ever popular North Maida Vale area. Highlights include an unusually generous, Southerly aspect, reception room, modern kitchen and bathroom and a good size double bedroom. Additionally there is a very useful external storage room to the flat.

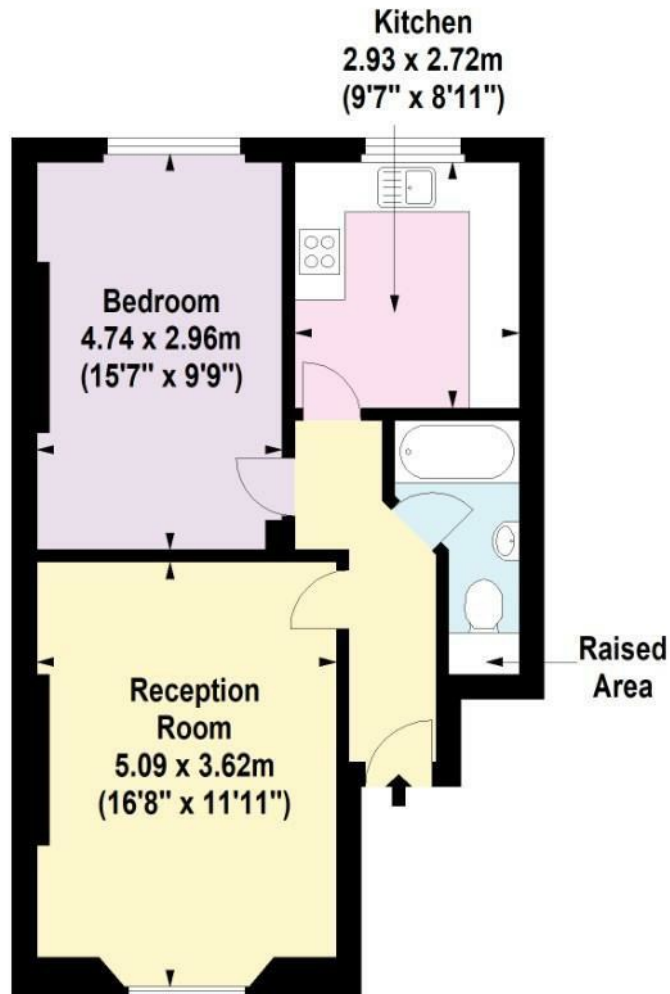
Conveniently located, the property is just a stone's throw away from Paddington Recreation Ground, providing ample green space for leisurely strolls or outdoor activities. Additionally, Kilburn Park tube station, Kilburn High Road (with its direct access to Euston) and multiple bus routes are within close proximity ensuring excellent transport links to the rest of London.

Offered to the market chain free, this property is an ideal choice for first-time buyers or investors looking for a well-located home with character.

Area Map



Floor Plan



For Identification Purposes Only. Not To Scale. © www.totalvista.uk 2026

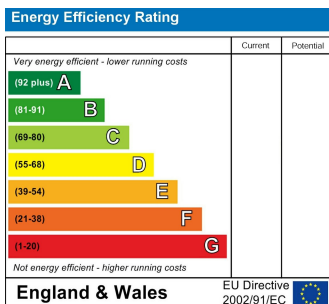


Princess Road, NW6

Approx. Gross Internal Area
49.98 Sq M - 538 Sq Ft



Energy Efficiency Graph



Viewing

Please contact our Sales QP Office on 0207 604 4040 if you wish to arrange a viewing appointment for this property or require further information.

- Generous conversion flat
- Set within an attractive period building
- Large external storage
- Offered to the market chain free cupboard
- Close to Paddington Rec.
- Short walk to Bakerloo Line tube
- Lots of transport options

For further information contact:

Sales QP, 2a Brondesbury Road, London, NW6 6AS

Tel: 0207 604 4040 Email: info@jorgensenturner.com <https://www.jorgensenturner.com/>

Disclaimer

These particulars, whilst believed to be accurate are set out as a general outline only for guidance and do not constitute any part of an offer or contract. Intending purchasers should not rely on them as statements of representation of fact, but must satisfy themselves by inspection or otherwise as to their accuracy. No person in this firm's employment has the authority to make or give any representation or warranty in respect of the property.