



Moore Park Road, SW6

£807 Per week

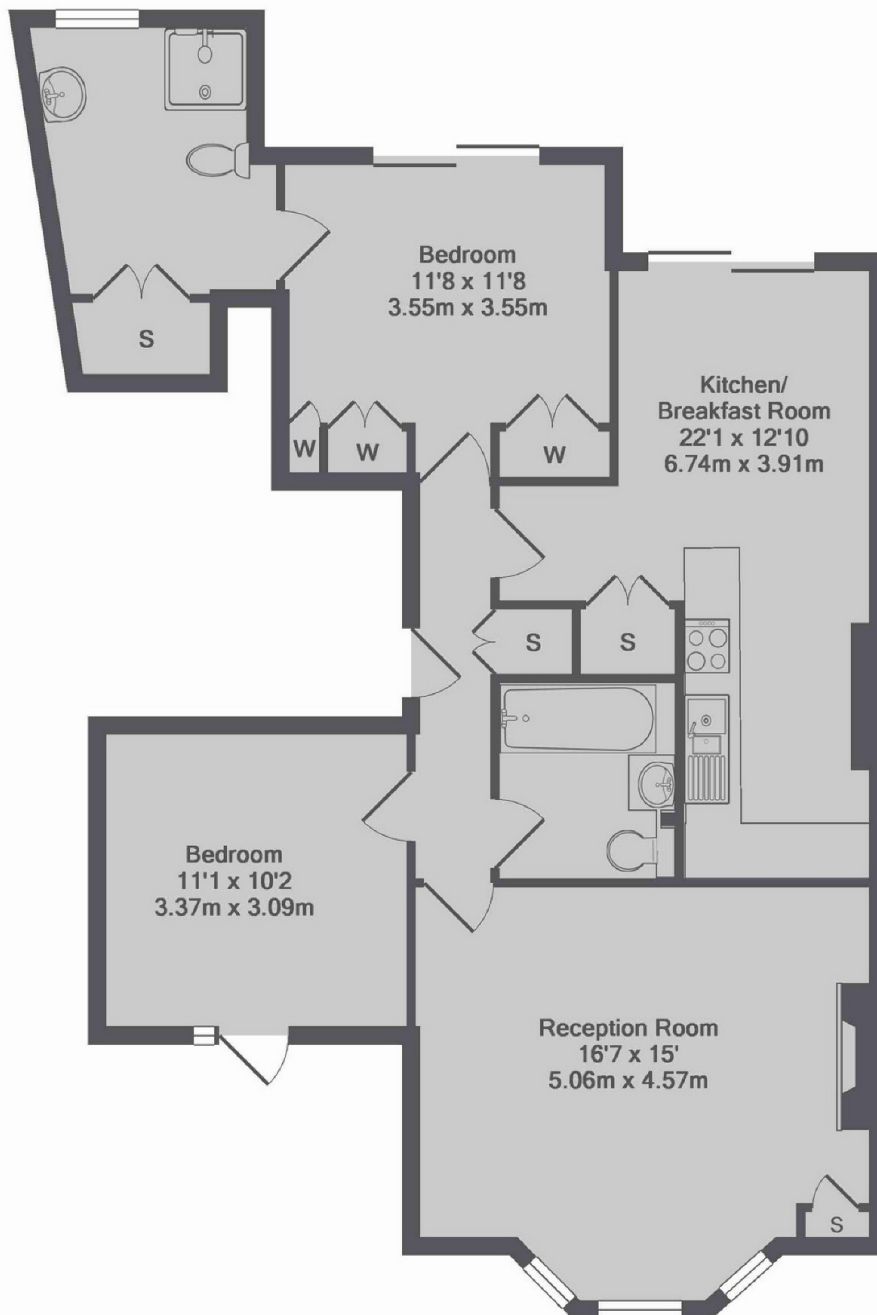
A stunning end of terrace garden flat on one of Fulham's premier roads. The property offers a large reception room, two double bedrooms, two bathrooms and a stunning south-facing garden.

Moore Park Road is perfectly located for the amenities on both Fulham Road and Kings Road with the transport links of Fulham Broadway close by.

Features

- Private Garden
- Two Bathrooms
- Residential Road
- Central Location
- Period Property
- Large Reception Room

Moore Park Road, London, SW6



Moore Park Road, SW6
Total Approx. Floor Area 902 Sq.Ft. (83.8 Sq.M.)