



Queens Way, TW13

£799,950

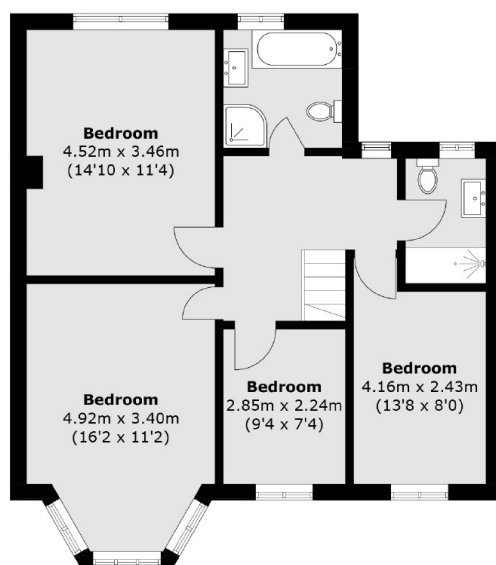
This fantastic family home really is a must see! Found on one of the largest plots in Hanworth Park, this substantial semi-detached home offers plenty of space with further scope to extend to. Please get in touch to arrange a viewing!

Queens Way is set within the popular Hanworth Park Estate and is close to excellent transportation links. It is also in close proximity to excellent state and private schools and has easy access for the A316, M3 and Heathrow Airport.

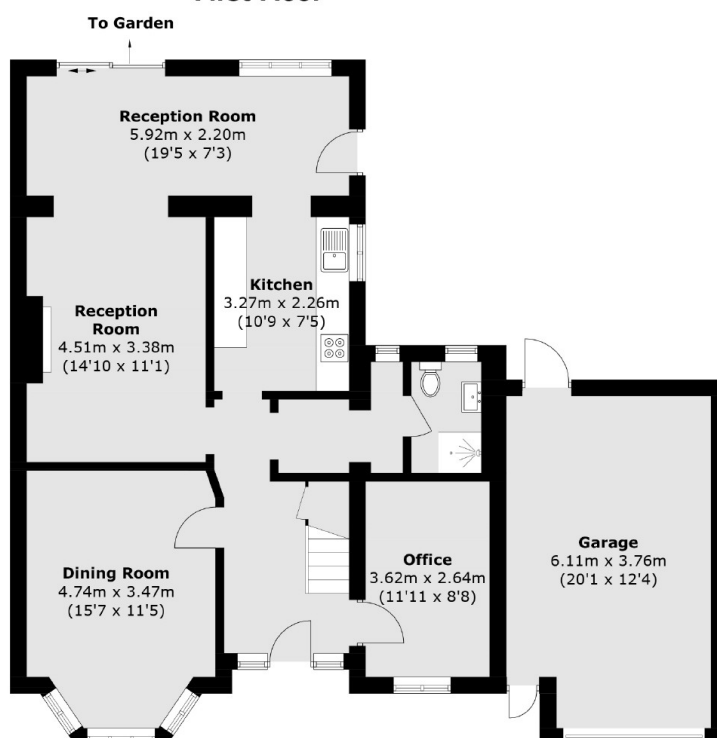
Features

- Four Bedroom
- Three Bathroom
- No Onward Chain
- Off Street Parking
- Large Garden
- Garage

Queens Way, Feltham, TW13



First Floor



Ground Floor

Approx Internal Area: 148.3 sq. m (1,596.2 sq. ft)
Garage: 22.3 sq. m (240.0 sq. ft)