

**sansome
& george**

SANSOME
& GEORGE



2 The Mews, Bramley

Guide Price **£550,000**

2 The Mews

Bramley

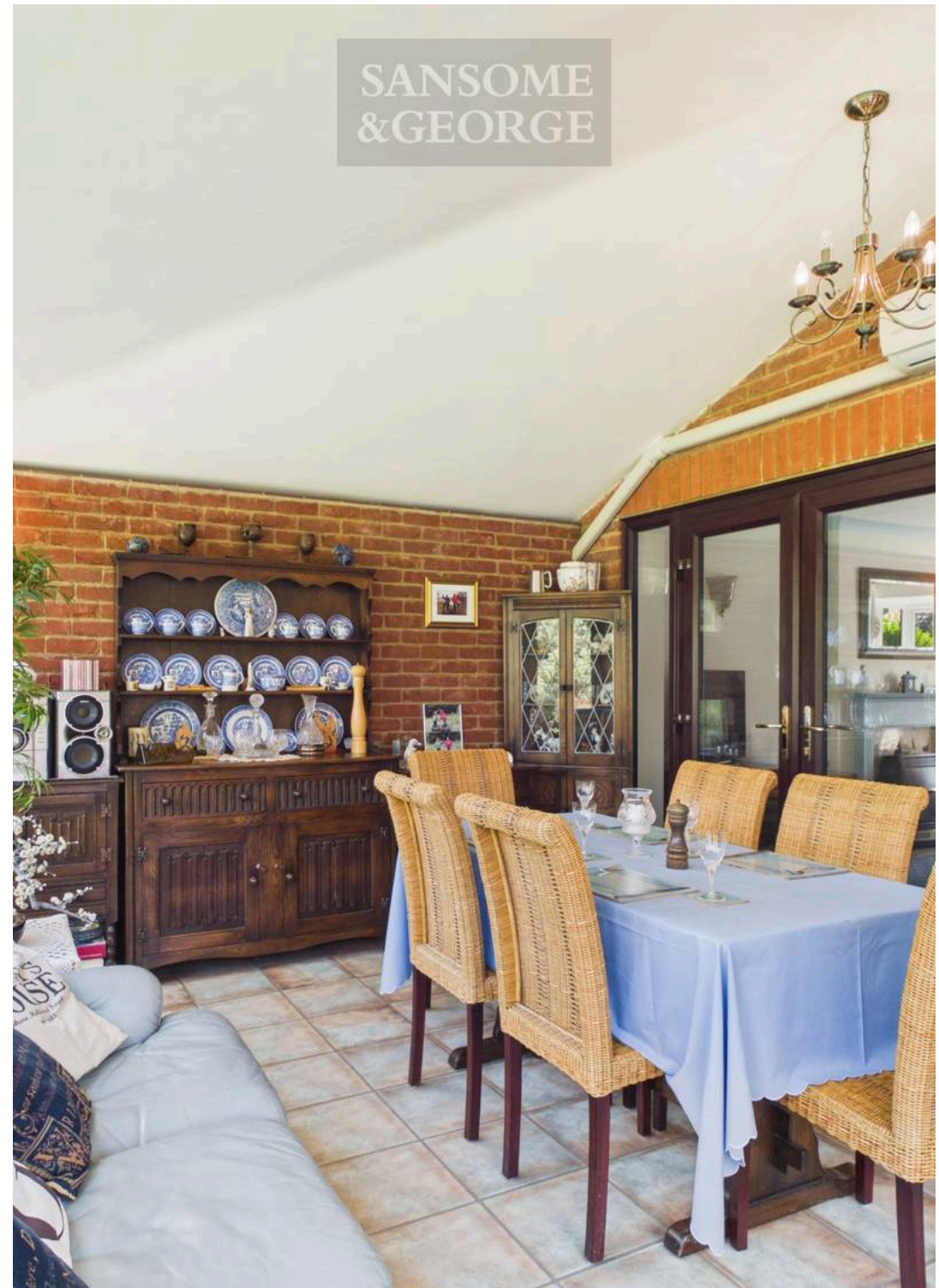
Sansome & George - Presenting an exceptional opportunity to acquire a beautifully presented three bedroom detached house situated in the highly sought-after area of Bramley, this impressive home offers spacious and versatile accommodation ideal for families or those seeking ample living space. Upon entering, you are greeted by a welcoming hallway that leads to three well-proportioned reception rooms, providing flexibility for formal entertaining, a comfortable family lounge, and a dedicated dining area. The addition of a bright sunroom enhances the living space with a fully integrated aircon/heater which offers a tranquil spot for relaxation or informal gatherings. The well-appointed kitchen features ample storage and worktop space, catering to the needs of modern living. Upstairs, the property boasts three bedrooms, including a master bedroom with its own en-suite shower room (perfect for privacy and convenience), while the remaining bedrooms are served by a family bathroom. Practical benefits include a garage and a private driveway, providing secure parking and additional storage options. Located in a popular residential area of Bramley, the property is within easy reach of local amenities, schools, and excellent transport links, making it an ideal choice for commuters and families alike. This delightful home combines comfort, functionality, and a prime location, offering a superb lifestyle opportunity for discerning buyers. Early viewing is highly recommended to fully appreciate the quality and versatility of accommodation on offer.

Council Tax band: E

Tenure: Freehold

EPC Energy Efficiency Rating:

EPC Environmental Impact Rating:



SANSOME
&GEORGE



SANSOME
&GEORGE



SANSOME
&GEORGE



SANSOME
&GEORGE



SANSOME
&GEORGE

2 The Mews

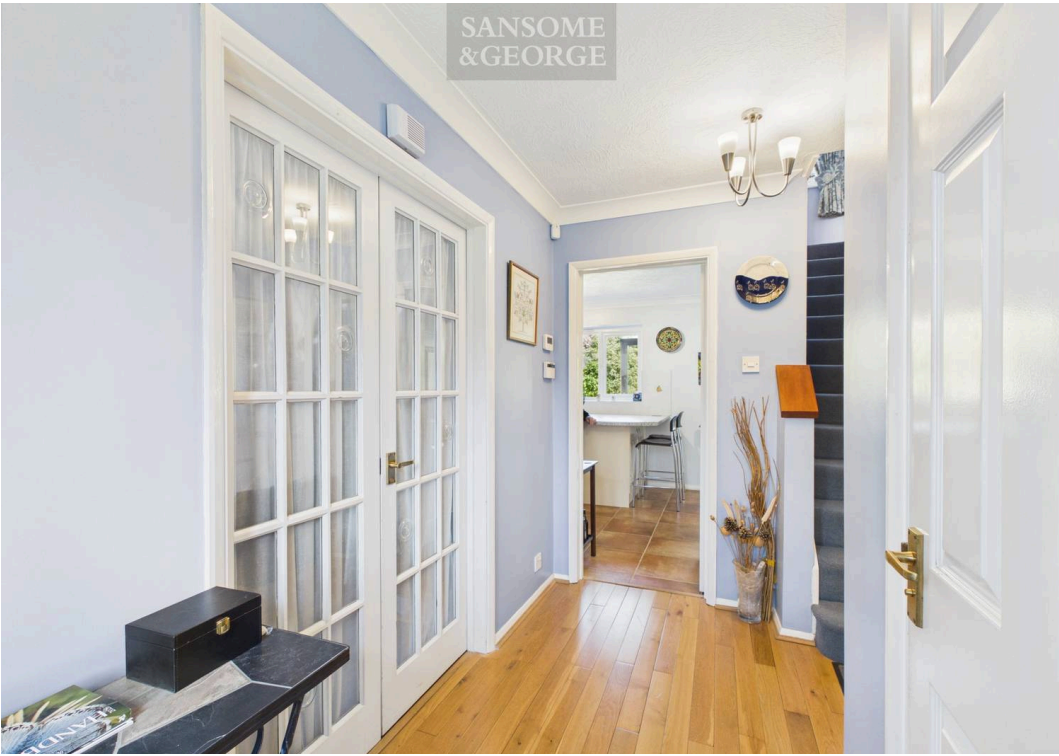
Bramley, Tadley

- 3 Bedroom detached house
- Popular location in Bramley
- 3 Reception rooms
- Sunroom with fully integrated aircon / heater
- En-suite to master
- Generous Garden
- Garage and driveway
- Solar Panels with battery storage
- EV Charger



sansome
& george

SANSOME
& GEORGE



SANSOME
& GEORGE

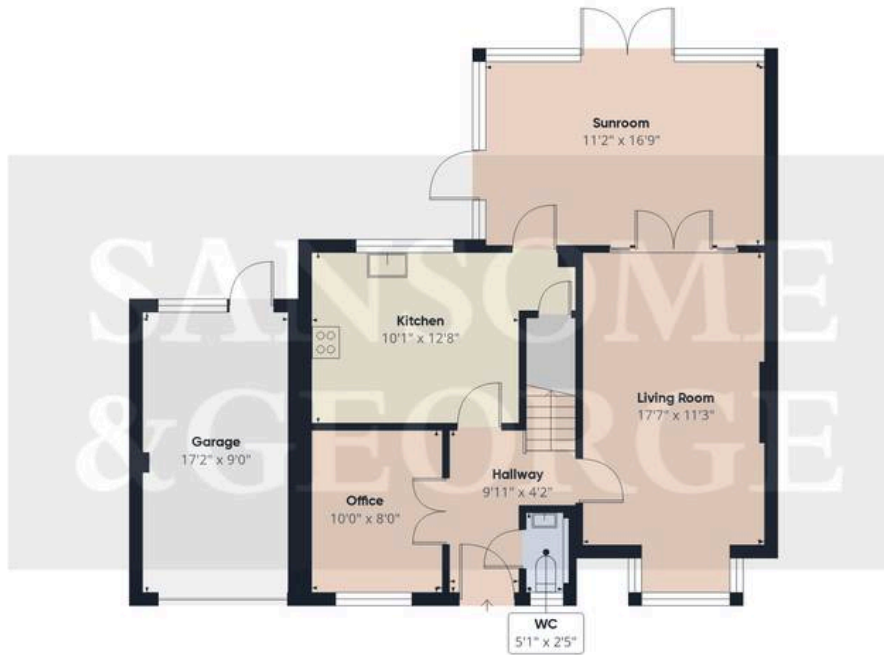


SANSOME
& GEORGE



SANSOME
& GEORGE





Floor 0

Approximate total area⁽¹⁾
1194 ft²

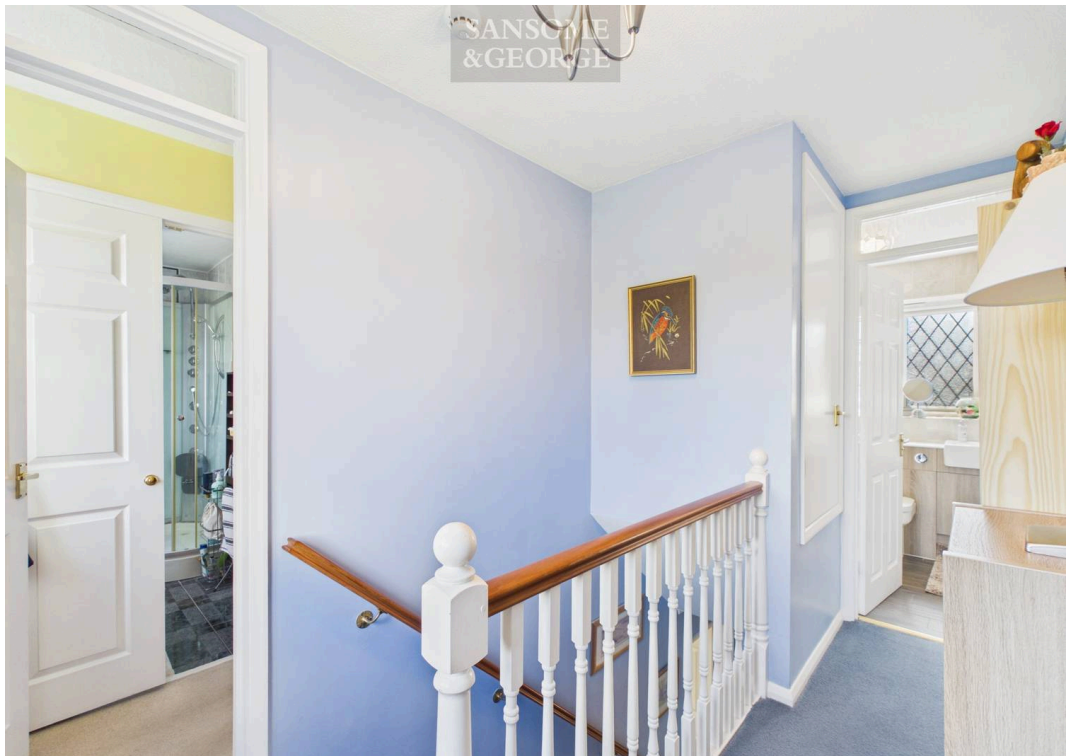
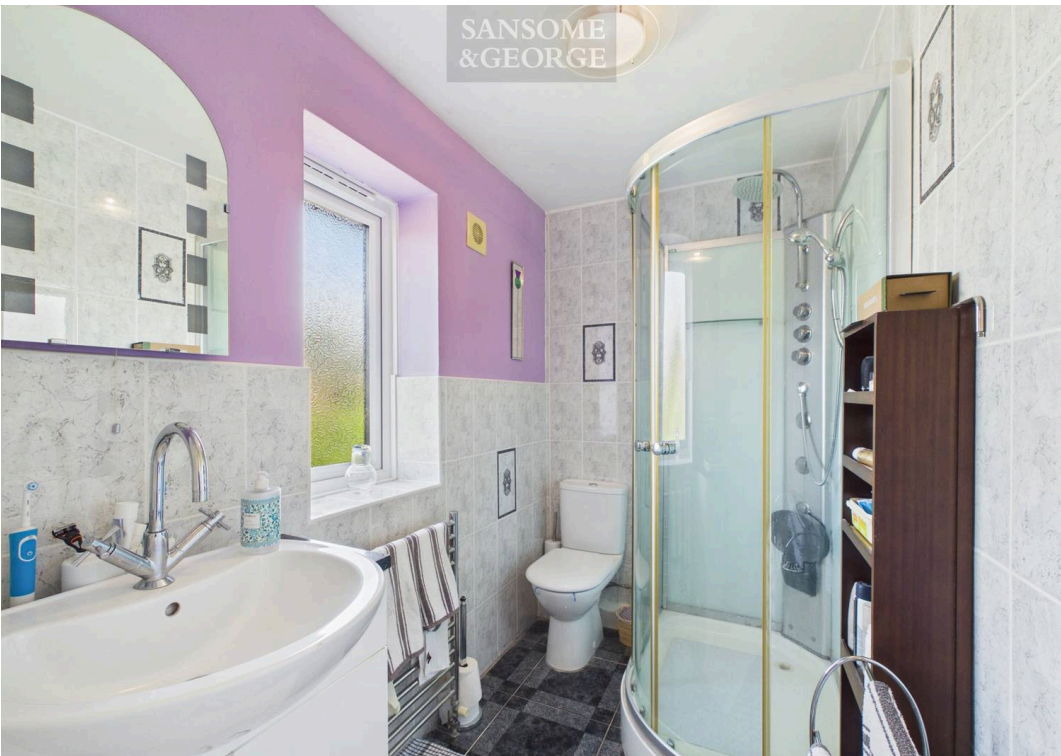


Floor 1



(1) Excluding balconies and terraces

Calculations reference the RICS IPMS 3C standard. Measurements are approximate and not to scale. This floor plan is intended for illustration only.





Sansome & George Bramley Office

Sansome & George, Sherfield Road – RG26 5AG

01256 882979 • • www.sansomeandgeorge.co.uk/

Disclaimer: Every attempt has been made to ensure accuracy, however these property particulars are approximate and for illustrative purposes only. They have been prepared in good faith and they are not intended to constitute part of an offer of contract. We have not carried out a structural survey and the services, appliances and specific fittings have not been tested. All photographs, measurements, floor plans and distances referred to are given as a guide only