



Flat

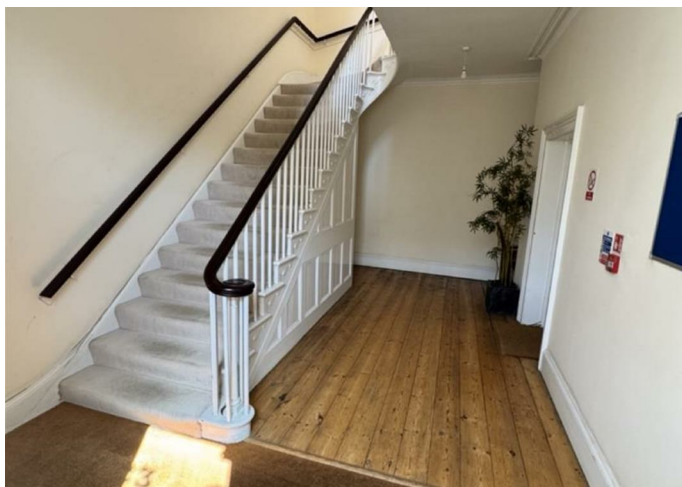
# FLAT 4, 23 WARWICK STREET, RUGBY, WARWICKSHIRE, CV21 3DN

PCM

## £850 PCM

### FEATURES

- ONE BEDROOM SPACIOUS APARTMENT
- RUGBY TOWN CENTRE
- BUILT IN WHITE GOODS
- RECENTLY RE-DECORATED
- ONE ALLOCATED PARKING SPACE
- AVAILABLE EARLY JUNE
- DEPOSIT £980
- EPC GRADE E



**newman**  
property experts

# 1 Bedroom Flat located in Rugby

**\*\*GOOD SIZE ONE BEDROOM FIRST FLOOR\*\***.....town centre apartment. This property has all the space you need, steeped with character, high ceilings, big sash windows with a modern interior. The property has been recently redecorated. The kitchen living room is open plan and a good size, with fitted white goods in the kitchen. A large double bedroom with built in wardrobes. Underfloor heating throughout. A modern shower suite has also been fitted. Parking for one car. Available Early June. EPC Grade E. Council Tax Band B

Call us on

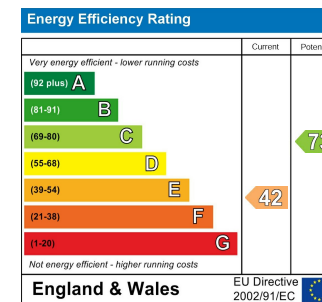
**01788 820028**

[let@newman.uk.com](mailto:let@newman.uk.com)

[www.newman.uk.com](http://www.newman.uk.com)

**Council Tax Band**

**B**



Agents Note: Whilst every care has been taken to prepare these particulars, they are for guidance purposes only. All measurements are approximate and are for general guidance purposes only and whilst every care has been taken to ensure their accuracy, they should not be relied upon and potential buyers are advised to recheck the measurements.

**newman**  
property experts