

Cheval Place, SW7



Spanning four floors and 2,809 sq. ft., this Cheval Place townhouse is a masterclass in Knightsbridge elegance. From the vibrant, open-plan reception area to the four en-suite bedrooms and private rooftop courtyard, every inch is designed for comfort. Residents benefit from a truly inclusive experience: a private garage, 24-hour concierge, weekly housekeeping, and all utility bills covered. Located steps from Hyde Park and Harrods, it offers an unbeatable lifestyle in one of London's most prestigious enclaves

2809.00 sq ft | 2 RECEPTION ROOM | 4 BEDROOMS | EN SUITE SHOWER ROOM | 4 BATHROOMS | KITCHEN



**Guide Price £7,500 Per
Week**

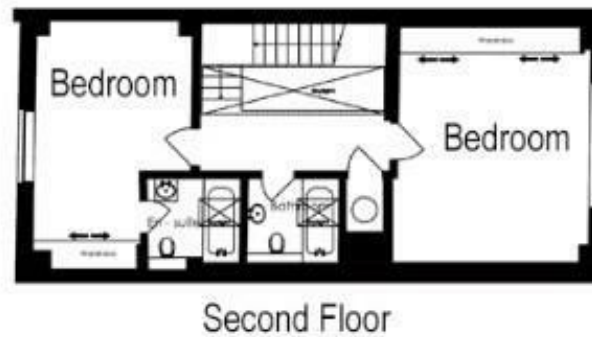
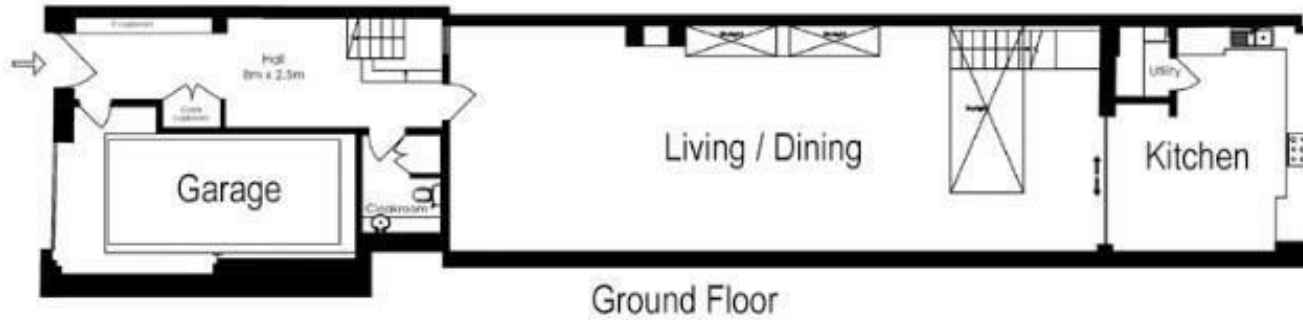
020 7937 9070
www.croft-international.com



Cheval Knightsbridge

Four Bedroom Townhouse

2809 Sq Ft / 261 Sq M



Please note that diagrams are not to scale and all measurements are approximate.

