



Ossian Road, N4

£1,250,000

Dexters



Ossian Road, N4

Situated on a sought-after turning between Mount Pleasant Reservoir and the Parkland Walk, this rare three-bedroom detached modern house is arranged over two floors and includes a private courtyard garden and self-contained studio annex.

Designed and built by the current owners, this distinctive home offers flexible living for family life, work and entertaining. The ground floor comprises two bedrooms, a study or nursery and a family bathroom, while the upper floor opens to a bright, spacious kitchen and reception room with adjoining terrace and green views.

A separate single-storey annex across the entrance yard includes its own kitchen, shower room, sleeping area and private entrance, ideal for guests, extended family or a workspace.

Ossian Road is a short walk from Stroud Green Road, Crouch Hill and Crouch End, with a range of shops and cafés nearby. Excellent transport links are available from Crouch Hill, Harringay and Finsbury Park, and St Aidan's Primary School (Ofsted outstanding) is just five minutes away.

Features

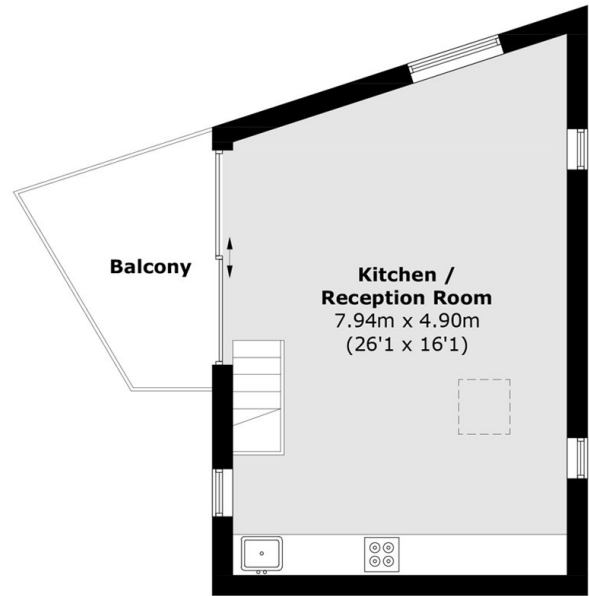
- Freehold
- Architecturally Designed
- Open Plan Kitchen/Reception
- Modern Build
- Separate Annex
- Detached



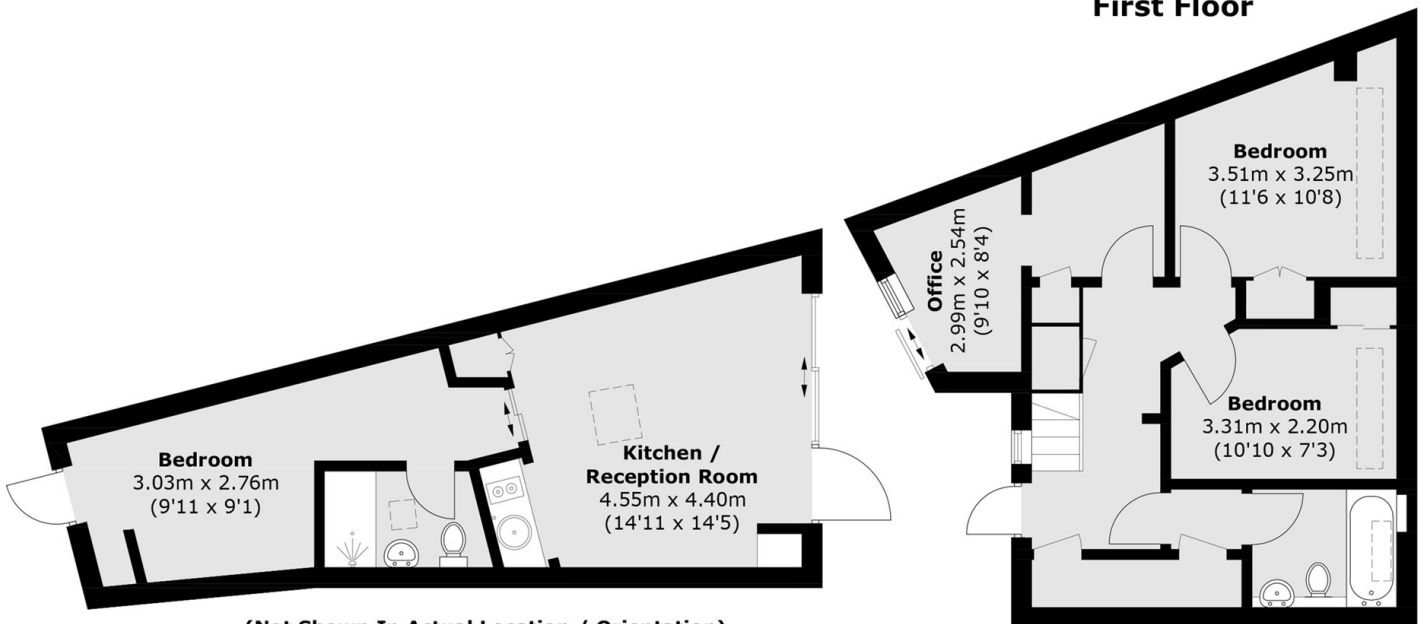




Ossian Road, London, N4



First Floor



(Not Shown In Actual Location / Orientation)
Studio / Annexe

Ground Floor

Total area (approx.): 79.8 sq. m (858.9 sq. ft)

Studio / Annexe: 34.7 sq. m (373.5 sq. ft)

Balcony: 7.0 sq. m (75.3 sq. ft)