



Resolution Close

Chatham | ME5 7RJ



CR Real Estate are delighted to offer this substantial six-bedroom family home, presented in modern condition throughout and offering generous living accommodation across two floors.

The ground floor comprises a spacious open-plan lounge/diner with patio doors leading directly onto the rear garden, creating an ideal space for both family living and entertaining. There is a large modern kitchen with ample storage and worktop space, a second reception room which could be used as a family room, playroom or home office, together with a convenient downstairs WC.

To the first floor, the property benefits from six well-proportioned bedrooms, including a principal bedroom with en-suite shower room. The remaining bedrooms are served by a modern family bathroom.

Externally, the property enjoys a private rear garden and a large driveway providing off-road parking for two vehicles.

This impressive home offers excellent space throughout and would be ideal for a large family or company let seeking quality accommodation in a desirable location.



CR Real Estate are part The Ombudsman Redress Scheme and are a member of the Propertymark Client Money Protection Scheme. Tenant deposits are protected by the Tenancy Deposit Scheme. For more information, please contact us.

Client Money Protection is provided by: Client Money Protect. Scheme Ref: CMP004209

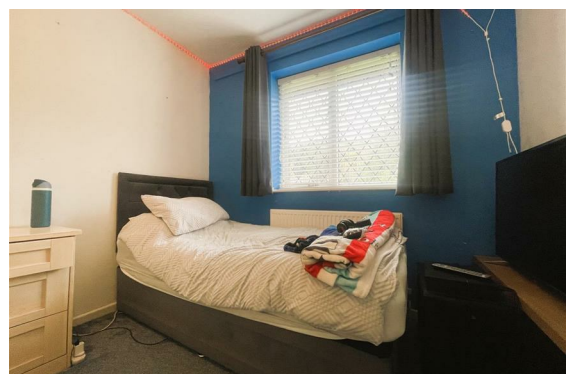
Independent redress is provided by: The Property Ombudsman (TPO). Membership Number: E01687

£2,500 Per Calendar Month



- SPACIOUS 6 BEDROOM PROPERTY TO RENT
- GARAGE PLUS DRIVEWAY FOR 2 CARS
- LARGE GARDEN
- ENSUITE BATHROOM
- OPEN PLAN LOUNGE/DINER
- WADERSLADE LOCATION
- AVAILABLE AUGUST
- HOLDING DEPOSIT £576
- COUNCIL TAX BAND F
- EPC RATING D



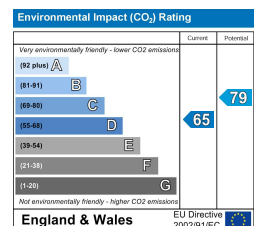
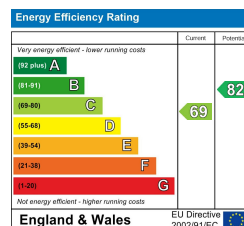




18 - 20 High Street
 Gillingham
 Kent
 ME7 1BB

01634 570057

www.crealestate.co.uk
 twitter.com/CRRealEstateUK
 facebook.com/CRRealEstateUK



CR Real Estate endeavour to maintain accurate depictions of properties in Virtual Tours, Floor Plans and descriptions, however, these are intended only as a guide and purchasers must satisfy themselves by personal inspection.

