



SOUL ESTATES

SALES & LETTINGS

TO LET - 3 BEDROOM HOUSE

Abbey Crescent, Oldbury, B68

£1,300 PCM

Soul Estates are proud to present this well-presented 3-bedroom semi-detached house To Let. This perfect family home is situated in a very popular area of Oldbury. Situated near Langley Green Station with good schools, local amenities and transport links to Birmingham and dudley and Wolverhampton.

The property offers an entrance porchway leading into the hallway with rooms going off to the spacious through lounge, family kitchen and downstairs shower room. Kitchen with a range of wall and base units to match, splashback tiling, gas hob with an electric oven.

Stairs leading to the first-floor landing, which leads off to two double bedrooms, one single bedroom and a family bathroom. The property also benefits from gas central heating and double glazing, a low-maintenance front and rear garden with off-road parking.

✓ **3 BEDROOM SEMI-DETACHED HOUSE**

✓ **DOWNSTAIRS SHOWER SOOM**

✓ **SPACIOUS THROUGH LOUNGE**

✓ **PATIO WITH LAWN**









SOUL ESTATES

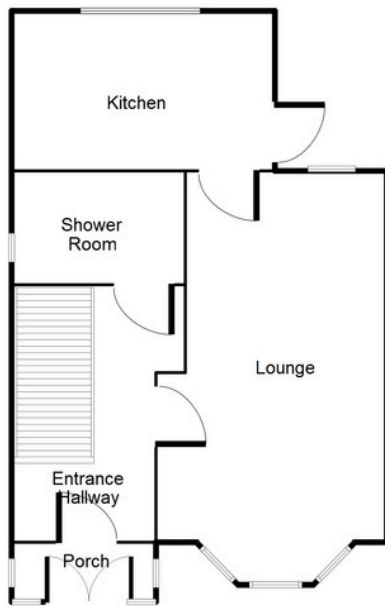
SALES & LETTINGS

TO LET - 3 BEDROOM HOUSE

Abbey Crescent, Oldbury, B68

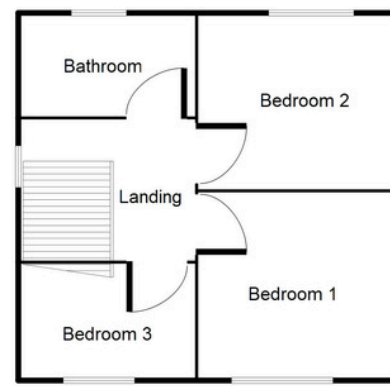
£1,300 PCM

Ground Floor



This floorplan is just an example, this is not to scale.
Please see description for exact room sizes.
(c) Soul Estates

First Floor



This floorplan is just an example, this is not to scale.
Please see description for exact room sizes.
(c) Soul Estates

Entrance Hall

14' 6" x 5' 11" (4.42m x 1.80m)

Lounge

22' 3" x 14' 1" (6.78m x 4.29m)

Kitchen

9' 1" x 12' 0" (2.77m x 3.65m)

Shower Room

5' 5" x 6' 6" (1.65m x 1.98m)

Landing

7' 10" x 6' 3" (2.39m x 1.90m)

Bedroom 1

10' 11" x 13' 0" (3.32m x 3.96m)

Bedroom 2

8' 10" x 13' 0" (2.69m x 3.96m)

Bedroom 3

7' 10" x 7' 11" (2.39m x 2.41m)

Family Bathroom

5' 3" x 7' 10" (1.60m x 2.39m)



SOUL ESTATES
SALES & LETTINGS

CONTACT US

Soul Estates
20 Great Bridge
Tipton
DY4 7HA

0121 647 6779

www.soulestates.co.uk

WWW.SOULESTATES.CO.UK | 0121 647 6779