



85 RICHMOND ROAD KINGSTON UPON THAMES, KT2 5BP

£260,000
LEASEHOLD

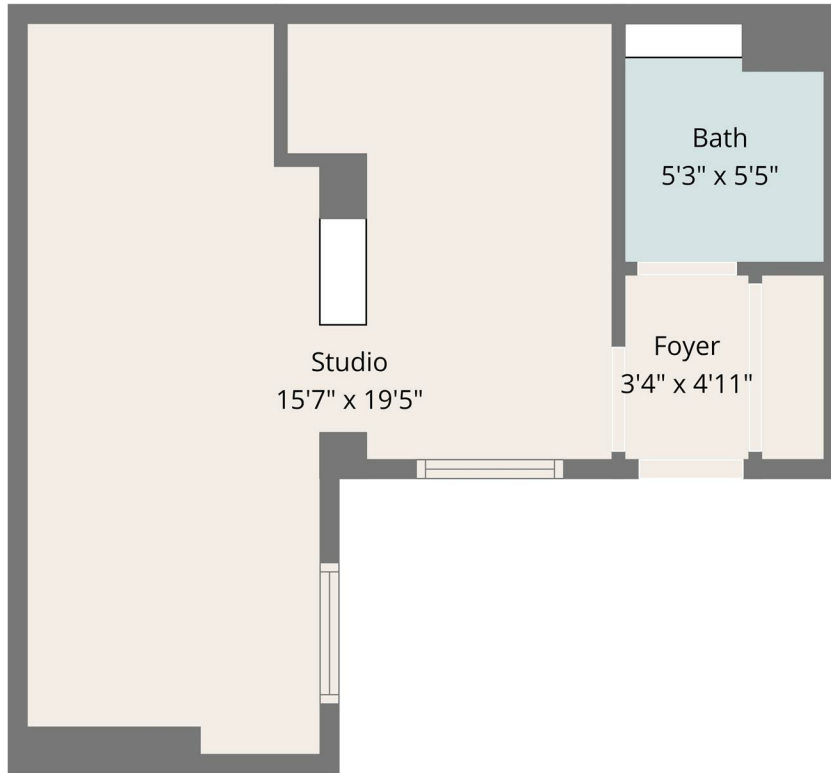
A well-presented ground floor studio apartment with its own private entrance, ideally situated on the highly sought-after Richmond Road in Kingston upon Thames. This charming property offers a fantastic opportunity for first-time buyers, investors, or those seeking a convenient pied-à-terre in a vibrant riverside location.

The apartment benefits from a bright and versatile living space, thoughtfully arranged to maximise comfort and functionality. The property further enjoys direct access to a well-maintained communal garden, providing a peaceful outdoor retreat.

Perfectly positioned just moments from the picturesque Canbury Gardens and the River Thames, the property offers an enviable lifestyle with scenic walks and green open spaces right on your doorstep. Kingston Station is within easy reach, offering excellent transport links into Central London, while Kingston Town Centre provides a wide array of shops, restaurants, and leisure facilities.

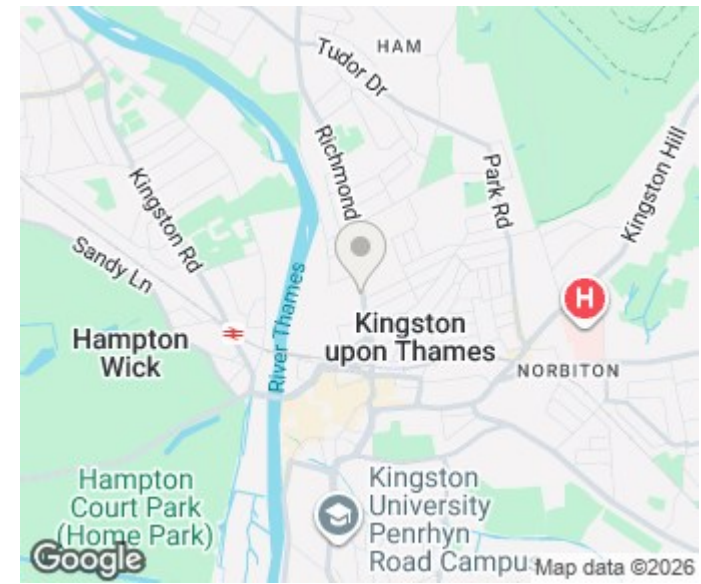
This is an excellent opportunity to acquire a well-located studio apartment in one of Kingston's most desirable areas.

WR
WYNDHAM ROW



Total: 308 sq. ft
 1st Floor: 308 sq. ft
 Excluded Areas: Walls: 41 sq. ft

Disclaimer: Measurements Deemed Highly Reliable But Not Guaranteed



Energy Efficiency Rating		
	Current	Potential
<i>Very energy efficient - lower running costs</i>		
(92 plus) A		
(81-91) B		
(69-80) C		74
(55-68) D		
(39-54) E	51	
(21-38) F		
(1-20) G		
<i>Not energy efficient - higher running costs</i>		
England & Wales	EU Directive 2002/91/EC	

Agents Note: Whilst every care has been taken to prepare these particulars, they are for guidance purposes only. All measurements are approximate and are for general guidance purposes only and whilst every care has been taken to ensure their accuracy, they should not be relied upon and potential buyers/tenants are advised to recheck the measurements

Wyndham Row Ltd
 Upper Deck, Admirals Quarters
 Portsmouth Road
 Thames Ditton
 Surrey
 KT7 0XA

01932 508 000
 office@wyndhamrow.co.uk
 www.wyndhamrow.co.uk

WR
 WYNDHAM ROW