



Lakeside Drive, NW10

£2,400 PCM

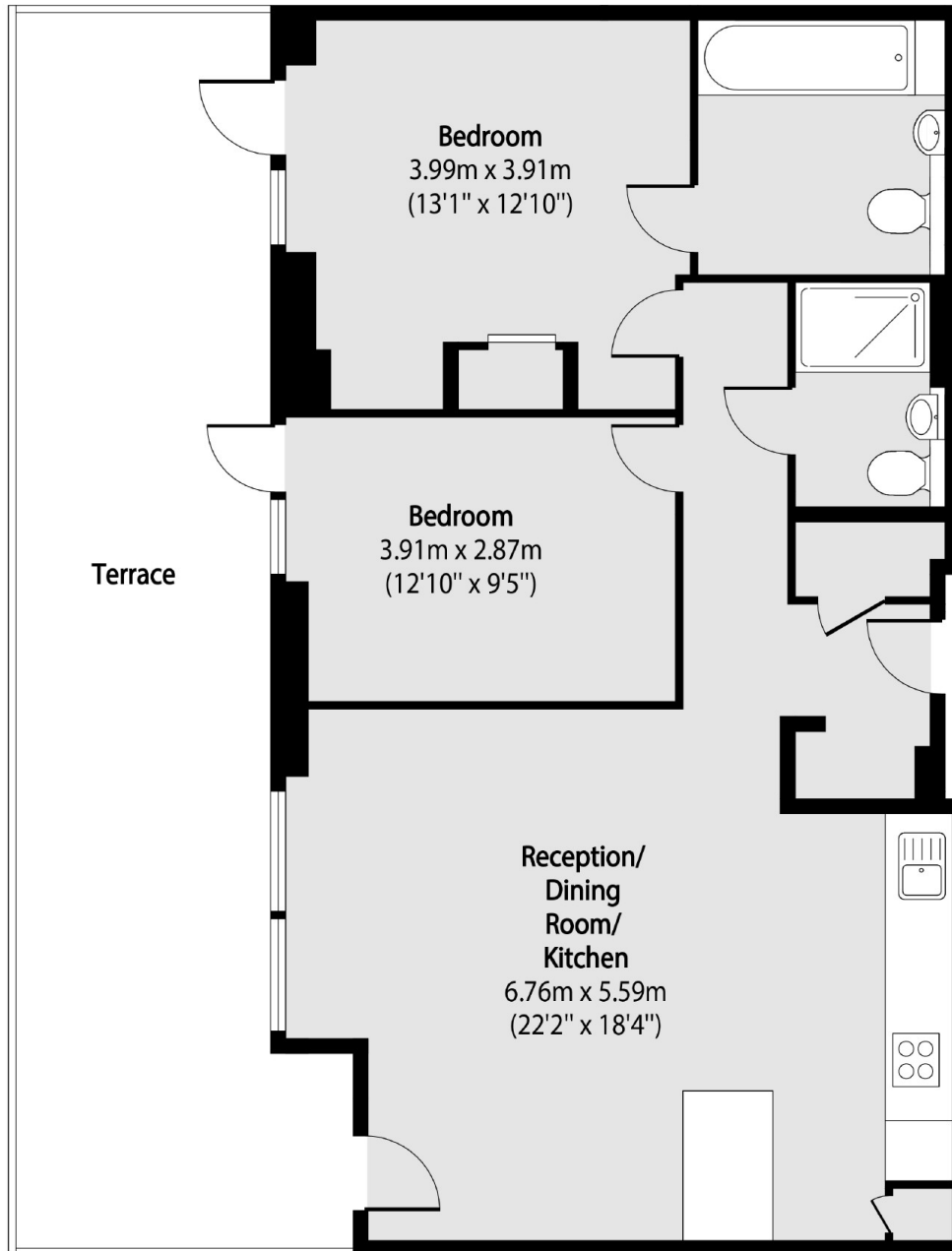
Stunning two double bedroom, two bathroom apartment on the ground floor with direct access to the park from private patio/garden. This property has a large reception room and a modern open plan kitchen.

Hanger Lane (Central line) and Park Royal Tube stations are just over half a mile away. Lakeside Drive is served by the 226 bus route.

Features

Modern Development
Two Double Bedrooms
Wooden Floors
Two Bathrooms
Close to Tube
Ample Storage

Lakeside Drive,
London, NW10



Total area (approx): 81.29 sq m (875 sq. ft)

Terrace total area (approx): 34.18 sq m (368 sq. ft)