



14 The Farthings, Marcham OX13 6QD



14 The Farthings

Occupying a generous plot within this highly coveted village of Marcham. A striking, spacious, fully renovated family home offering generously proportioned accommodation over two floors complemented by a detached double garage and sizeable mature rear garden. A wonderful family home discreetly located in this well serviced Oxfordshire village.

14 The Farthings is situated in a highly desirable location towards the end of this small, select development consisting of only substantial four and five bedroom detached family homes providing a very pleasant overall setting. The property offers easy access to the village's amenities including general store with post office, ancient parish church, primary school, public house and ample sporting facilities all within a short walk from the property. Useful distances include Abingdon town (circa. 3 miles), Oxford City (circa. 6 miles) and Didcot town with its useful mainline railway station to London Paddington (circa. 10 miles).

Bedrooms: 4

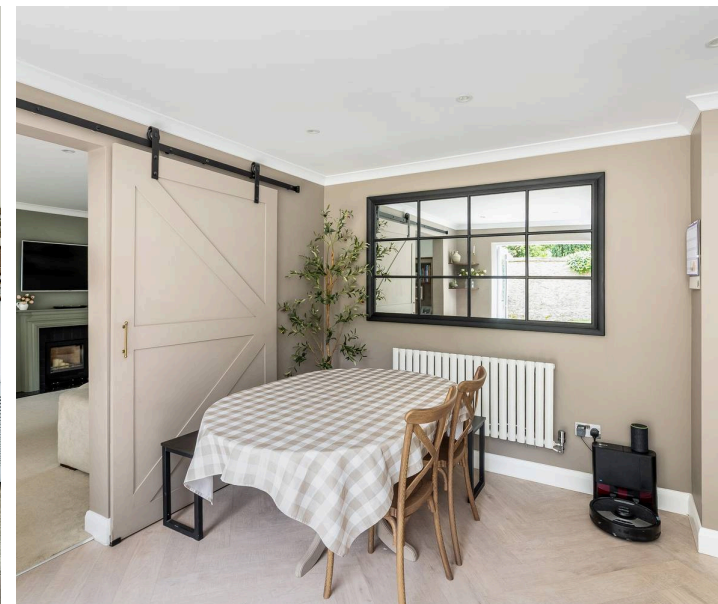
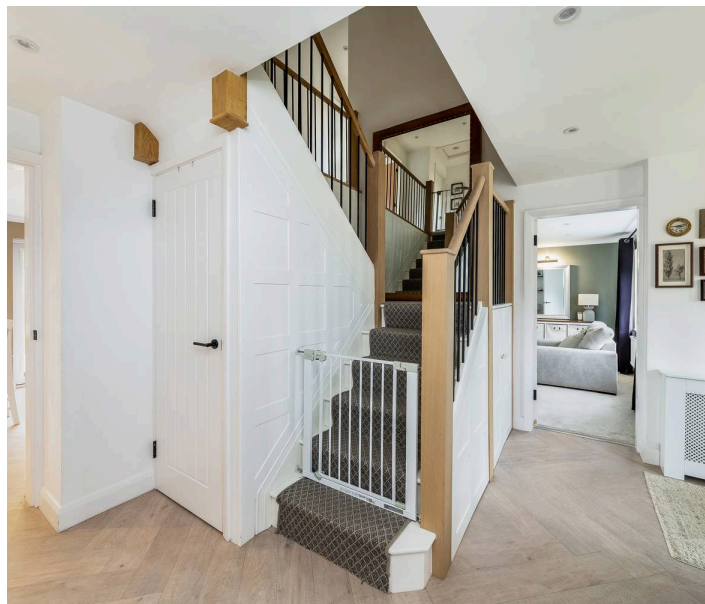
Bathrooms: 2

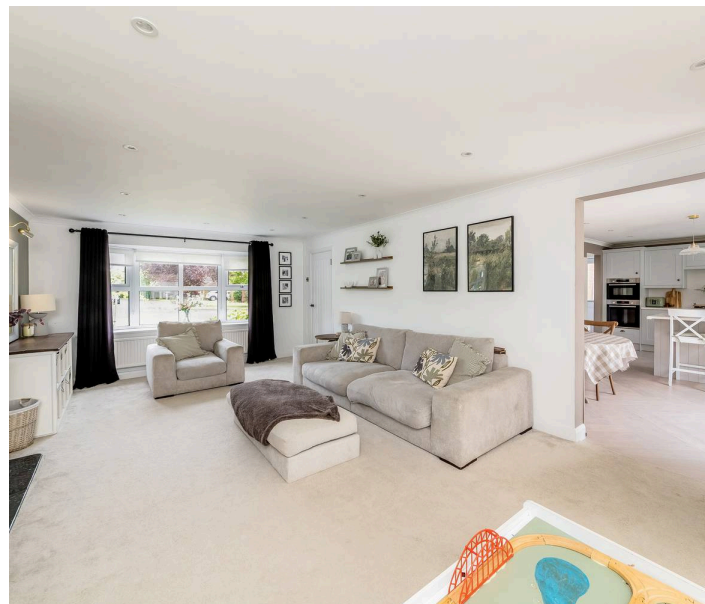
Reception Rooms: 2

Council Tax Band: G

Tenure: Freehold

EPC: D





Key Features

- Entrance hall with doors to all principal rooms, ample storage plus a ground floor WC
- Good size separate study to the front aspect
- Stunning 22'5" bay fronted living room with feature fireplace and inset wood burning stove. Sliding doors lead into the conservatory
- Spacious upvc double glazed conservatory providing panoramic views of the mature South facing gardens
- Superb social kitchen/dining room featuring a contemporary fitted kitchen with integral appliances, breakfast bar, instant boiling water tap complemented by separate utility room. A stylish barn style sliding door leads into the living room, double doors open out onto a paved terrace.
- Four good size bedrooms arranged around a most generous landing with ample storage
- Principal bedroom with generous built-in storage and a stunning, palatial contemporary en-suite
- Refitted family bathroom with large bath, shower and contemporary vanity unit with inset sink
- Externally the property benefits from a detached double garage with gated side access to the rear gardens, a generous frontage and driveway parking to the front of the property
- The South facing rear gardens offer 74' in width of wonderfully private, part walled gardens with attractive greenscape. The size of the plot offers genuine scope to substantially extend the accommodation, also offering space for a garden studio









BRITISH
PROPERTY
AWARDS
2024

GOLD WINNER

ESTATE AGENT
IN ABINGDON



**Introducing the Hodsons team...
...trust in our experience!**



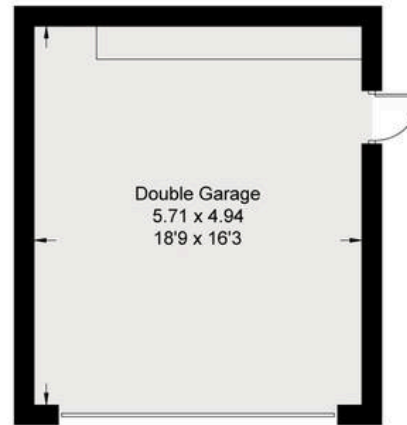
The Farthings, OX13

Approximate Gross Internal Area = 165.50 sq m / 1781 sq ft

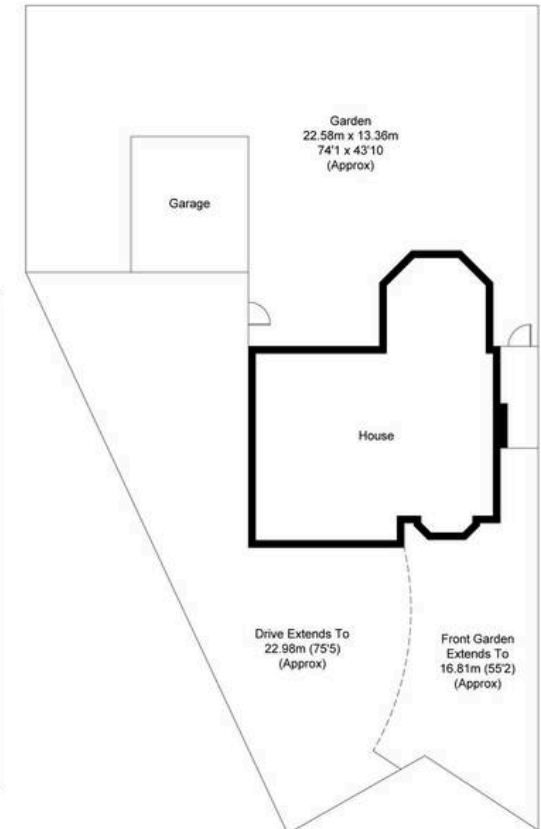
Garage = 28.20 sq m / 304 sq ft

Total = 193.70 sq m / 2085 sq ft

For identification only - Not to scale



(Not Shown In Actual
Location / Orientation)



Ground Floor

Not to scale, for illustration and layout purposes only.
© Mortimer Photography. Produced for Hodsons.
Unauthorised reproduction prohibited

First Floor



Hodsons
...your move, our passion

Sales | Lettings

5 Ock Street, Abingdon,
Oxfordshire, OX14 5AL

T: 01235 553686

E: abingdon@hodsons.co.uk

www.hodsons.co.uk