



Flat 8 Dorchester Crescent, Abingdon OX14 2AH



Flat 8 Dorchester Crescent

Spacious one bedroom ground floor flat, well situated in a very popular North Abingdon location, close to nearby amenities, sold with no ongoing chain.

Dorchester Crescent is situated in a very popular and established location offering easy pedestrian access to many nearby shops, several bus stops, excellent schooling including the sought after Rush Common Primary school and the thriving town centre's wide range of facilities. The A34 is a short drive leading to many important destinations north and south and Radley railway station (circa 2.2 miles) and Oxford City (circa 6 miles).

Bedrooms: 1

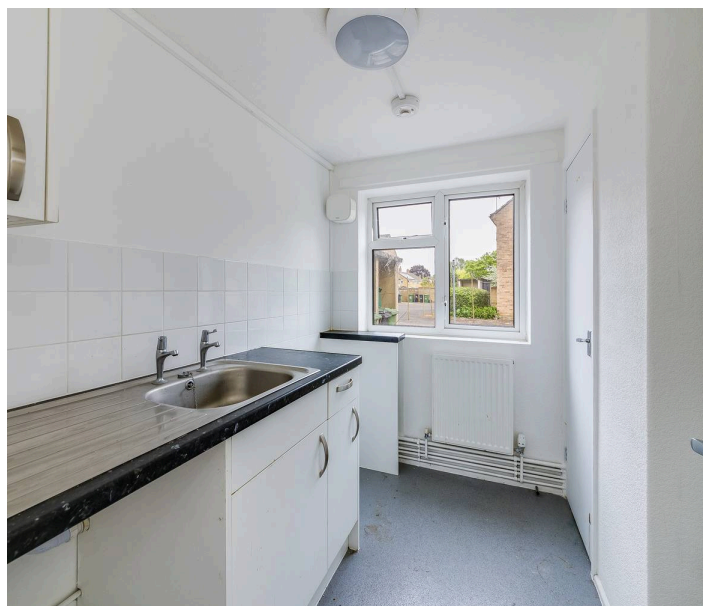
Bathrooms: 1

Reception Rooms: 1

Council Tax band: B

Tenure: Leasehold

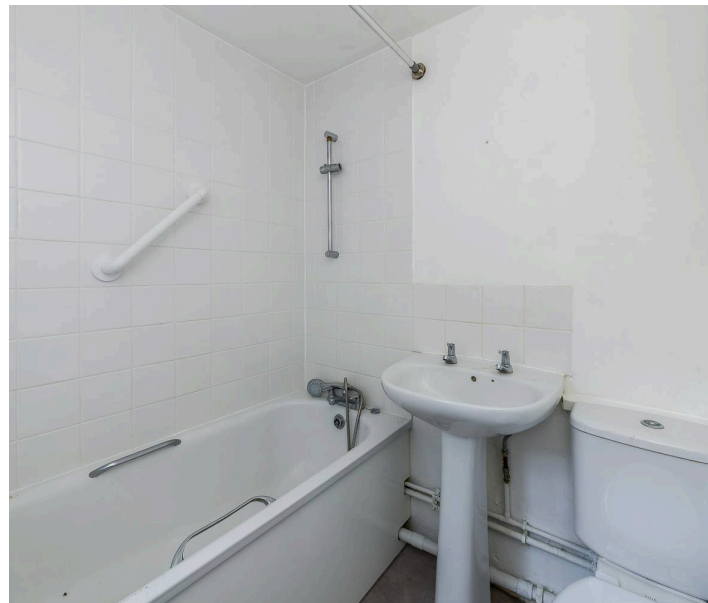
EPC: C





Key Features

- Secure communal entrance leading to entrance hall with tall storage cupboard off
- 17' double aspect living room/dining room enjoying attractive views over the green
- Well appointed kitchen
- Good sized double bedroom with built-in wardrobe/storage cupboard
- Bathroom fitted with white suite
- Mains gas radiator central heating, uPVC double glazed windows and the property is sold with no on-going chain
- Outside are communal grounds to the rear including designated drying areas
- The service charge is approximately £790.68pa and the property benefits from 990 years remaining on the lease





Dorchester Crescent, OX14

Approximate Gross Internal Area = 44.0 sq m / 474 sq ft

Total = 44.0 sq m / 474 sq ft



Ground Floor

Not to scale, for illustration and layout purposes only.
© Mortimer Photography. Produced for Hodsons.
Unauthorised reproduction prohibited



5 Ock Street, Abingdon,
Oxfordshire, OX14 5AL
T: 01235 553686
E: abingdon@hodsons.co.uk
www.hodsons.co.uk