



Cumberland Road | | Camberley | GU15 1AG

Price Guide £700,000 Freehold

Waterfords W
Residential Sales & Lettings

Cumberland Road |
Camberley | GU15 1AG
Price Guide £700,000

This extended 4 bedroom home enjoys a non overlooked south facing garden and is conveniently located on the popular Heatherside development with easy access to local amenities and excellent schools including Ravencote and Tomlinscote.

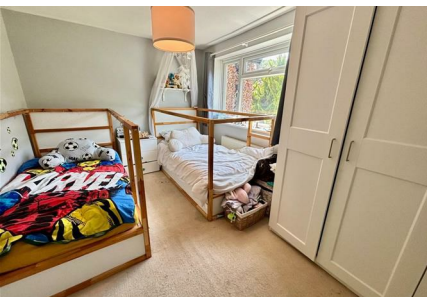
- 4 double bedrooms
- 2 reception rooms
- Kitchen/breakfast room
- Garden room
- South facing garden
- Garage and driveway
- Downstairs cloakroom
- Access to excellent schools

Accommodation

This extended 4 bedroom homes is approached by by the entrance hall and gives access to the dual aspect 19ft living room, with a feature fireplace and French doors opening to the garden, the living accommodation is further complimented by a family room or home office. The kitchen/breakfast has a good range of cabinets with contrasting worksurfaces and gives access to a downstairs cloakroom and an impressive Garden room with bi-folding doors to the garden. Upstairs, the main bedroom is served by an ensuite shower room, and the 3 remaining double bedrooms are served by a bathroom with a separate shower.



South facing garden



Outside

The property is approached by a driveway with backing for 3 cars, a wooden gate gives access to the rear. The non overlooked south facing garden is laid to lawn with conifer and shrub borders and a patio gives access to the Garden Room.

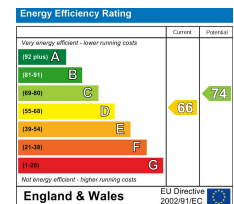
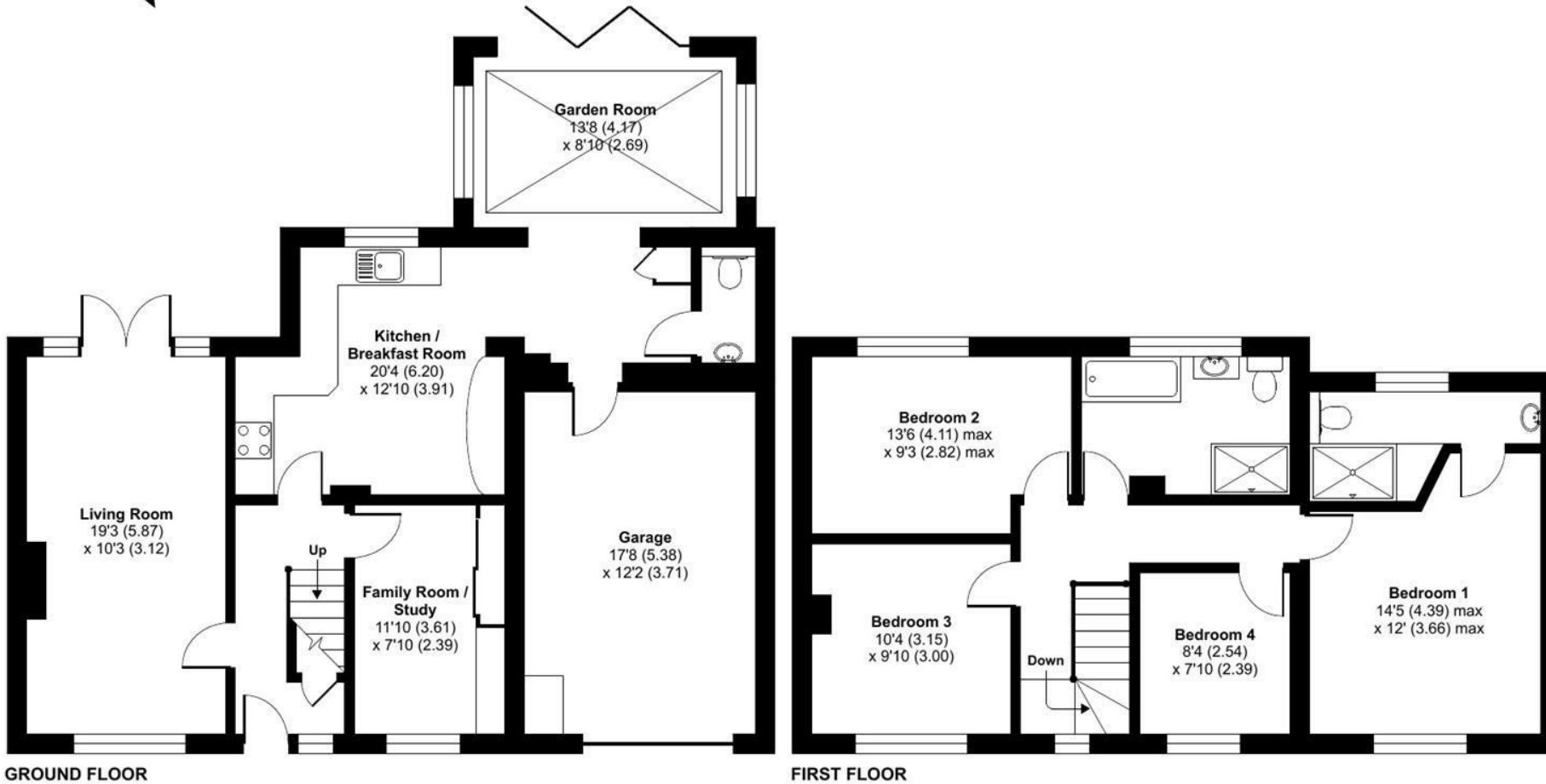
Location

The property is located in an established road on the popular Heatherside development close to a range of facilities including a Sainsbury's Local, pub and delightful open spaces including the impressive Wellingtonia Avenue. There is easy access to great commuter links via the A30/M3 and excellent local schools including Tomlinscote, Ravenscote and St Augustine's, all within easy reach.

Cumberland Road, Camberley, GU15

Approximate Area = 1719 sq ft / 160 sq m (includes garage)

For identification only - Not to scale



Floor plan produced in accordance with RICS Property Measurement 2nd Edition, Incorporating International Property Measurement Standards (IPMS2 Residential). © nichecom 2026. Produced for Waterfords. REF: 1482601



27 High Street
 Camberley
 Surrey
 GU15 3RB
 01276 66566
 camberley@waterfords.co.uk