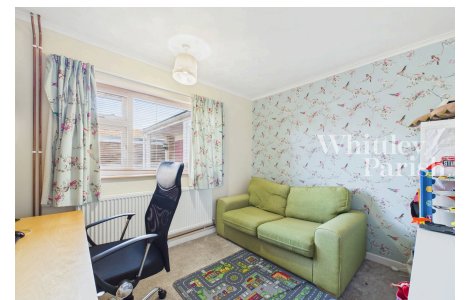


# Knyvett Green, Ashwellthorpe

Guide Price £375,000

3 1 1



This attractive three-bedroom detached chalet is tucked away in a quiet close within the highly sought-after village of Ashwellthorpe. The property has been thoughtfully upgraded and refurbished in recent years, offering a stylish and comfortable home ready to move into. Improvements include the installation of a new oil-fired central heating system with a combi boiler, updated pipework and radiators, along with a refitted kitchen and bathroom. The ground floor benefits from engineered oak flooring, complemented by fitted carpets to the hallway, stairs, and first floor. Externally, the property is set well back from the road with ample parking across two shingled driveways with one leading to a single garage. The enclosed rear garden is mainly laid to lawn and enjoys a pleasant outlook backing onto a playing field.

## Key Features

- Upgraded and refurbished
- Rear garden backing onto playing field
- Three double bedrooms
- Drainage - mains
- Freehold
- New boiler installed in 2020
- Utility room with shower
- Heating - oil
- Council Tax Band C
- EPC rating D

