



CHAPEL
COTTAGE

THE STORY OF
Chapel Cottage
Weybourne, Norfolk

SOWERBYS

S

THE STORY OF

Chapel Cottage

Weybourne, Norfolk
NR25 7SX

Character Brick-and-
Flint Property with
Beams and Fireplaces

Double-Sided Fireplace with
Log Burner and Hearth

Four Bedrooms Plus a Study

Overlooks All Saints Church

Near Beach, Bus Stops, Shop/
Deli and The Ship Inn

In Same Family Since 1968

Approx. 2,008 Sq. Ft. Plus
139 Sq. Ft. Outbuilding

Great Scope for Renovation
and Personalisation

SOWERBYS HOLT OFFICE
01263 710777
holt@sowerbys.com

Located in the heart of the picturesque coastal village of Weybourne, Chapel Cottage is a handsome period home steeped in local history and brimming with character. The home proudly showcases its heritage through exposed beams, a beautiful dual-sided fireplace with a log burner and open hearth, and a delightful feature fireplace upstairs. The rear elevation, a striking blend of brick and flint, offers an authentic nod to North Norfolk's architectural tradition. While the property offers a wonderfully atmospheric setting, there remains scope for sympathetic updating to truly make the most of its generous proportions and charming features.

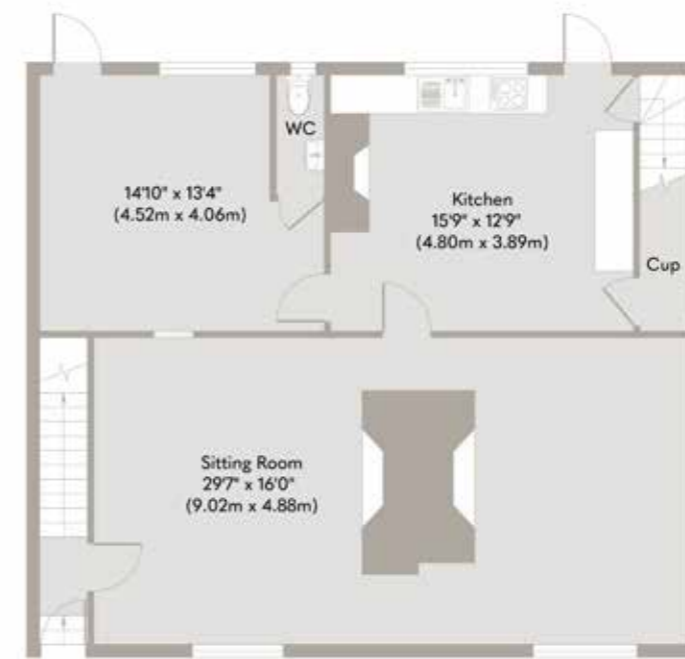
Perfectly placed with a terrific view of All Saints Church, the cottage enjoys an enviable location within easy reach of the beach via Beach Lane, as well as Weybourne's much-loved village shop and deli, and the award-winning Ship Inn that serves fantastic food, local beers and a warm welcome. Whether you're warming yourself by the fire after a coastal walk or heading out for a pint of local ale, everything you need is close to hand. The ground floor features a large sitting room ideal for family gatherings, while upstairs offers four bedrooms and a study, providing ample space for both guests and work-from-home living. The layout is further enhanced by the presence of two staircases, adding flexibility and character to the home's flow.

Chapel Cottage has been a treasured part of one family's story since 1968, originally chosen for its proximity to relatives and its strong ties to the Norfolk coast. For the past two decades, the home has been let to long-term tenants who cared for it deeply and appreciated its character and setting every bit as much as its owners. Now, with the passage of time, the cottage awaits new hands to refresh and restore its charm, offering an exciting opportunity to reimagine this much-loved home in one of North Norfolk's most desired coastal communities.





The thing we have loved most about living here is the North Norfolk coast, coastal towns and villages.



Ground Floor
Approximate Floor Area
1004 sq. ft
(93.27 sq. m)



First Floor
Approximate Floor Area
1004 sq. ft
(93.27 sq. m)

Outbuilding
Approximate Floor Area
139 sq. ft
(12.91 sq. m)

Whilst every attempt has been made to ensure the accuracy of the floor plan contained here, measurements of doors, windows, rooms and any other items are approximate and no responsibility is taken for any error, omission, or mis-statement. This plan is for illustrative purposes only and should be used as such by any prospective purchaser or tenant. The services, systems and appliances shown have not been tested and no guarantee as to their operability or efficiency can be given.

Copyright V360 Ltd 2025 | www.houseviz.com

Weybourne

WHERE HISTORY AND NATURE MEET

Just three miles west of Sheringham, Weybourne is familiar to many as a stop on The Poppy Line steam railway, which is a magnificent way to arrive at this unspoilt coastal village. You might spot pretty Weybourne Windmill as you ride the line, which local legend says once signalled to smugglers with the turn of its sails whether the coast was clear to land.

The mill was later home to Mr and Mrs Dodds who were arrested as spies during World War II, after police spotted the couple using the windmill to signal out to sea and discovered a radio transmitter. East Anglia's proximity to Europe meant it played a key role in the war effort and a secret World War II military site is to the west of the village, Weybourne Camp, which was visited by Churchill is now home to the Muckleburgh Collection, one of the UK's largest privately owned displays of guns and military vehicles.

Following Station Road, turn into Church Street where the medieval All Saints Church sits, and behind it Weybourne Priory, once home to Augustine monks. Further along is The Ship Inn, a traditional village pub which has been serving locals since the 1800s. Enjoy one of its wide selection of local ales and artisan gins as you enjoy seafood freshly caught just footsteps away. If you follow Beach Lane down to the coastline, you might see the boats which fish the waters for their catch.

Take the coastal path west towards pretty Cley and Salthouse Marshes or head east back to Sheringham. Surrounded by fields, woodland and heathland in an Area of Outstanding Natural Beauty, with its village shop, tea room, many traditional cottages and period homes this is a wonderful place to call home.



Note from the Vendor



“The house has been in my family and I have been coming to this property since 1968...”



SERVICES CONNECTED

Mains electricity, water and drainage. Heating via electric storage heaters.

COUNCIL TAX

Band D.

ENERGY EFFICIENCY RATING

E. Ref: 8709-2218-2929-6326-2883

To retrieve the Energy Performance Certificate for this property please visit <https://find-energy-certificate.digital.communities.gov.uk/find-a-certificate/search-by-reference-number> and enter in the reference number above. Alternatively, the full certificate can be obtained through Sowerbys.

TENURE

Freehold.

LOCATION

What3words: ///lavished.bachelor.ferrets

These particulars and measurements whilst believed to be accurate, are set out as a general outline only for guidance and do not constitute any part of an offer or contract. Intending purchasers should not rely on them as statements of representation of fact, but must satisfy themselves by inspection or otherwise as to their accuracy. No person in this firm's employment has the authority to make or give representation or warranty in respect of the property.

SOWERBYS

We are proudly supporting these Norfolk charities by organising and participating in events throughout 2025, along with making a donation for every home we sell.



Sowerbys Estate Agents Limited is a company registered in England and Wales, company no: 05668606. Registered office 54 Westgate, Hunstanton, Norfolk, PE36 5EL

