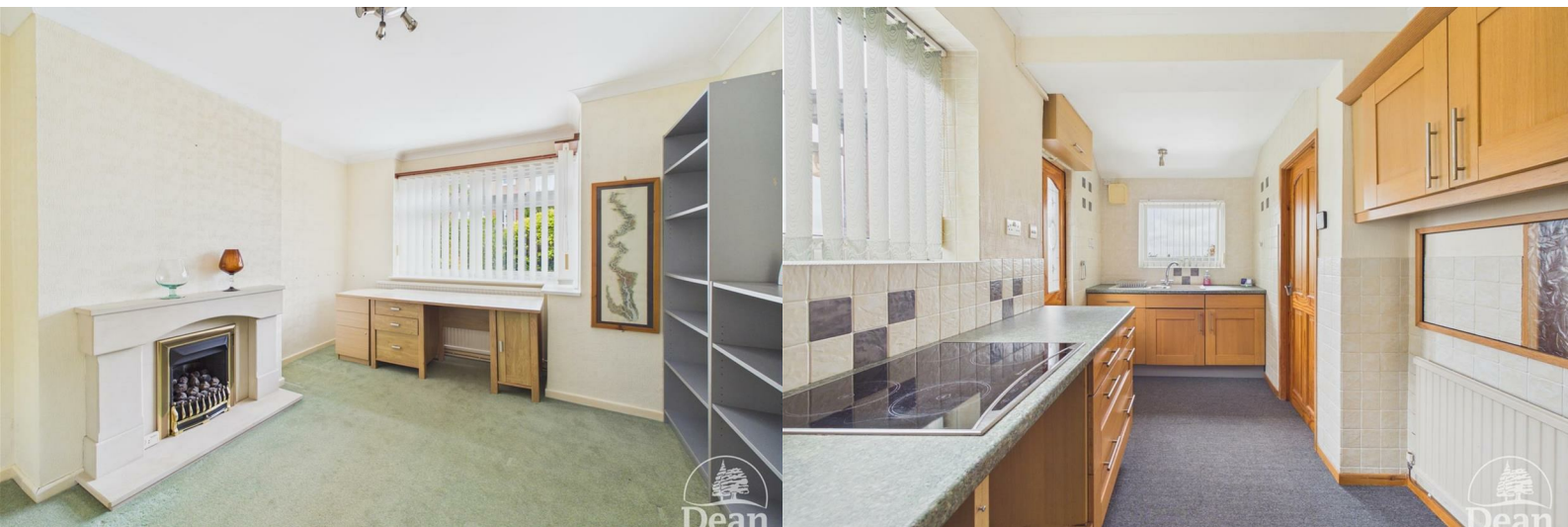




## Woodside Avenue

Cinderford, GL14 2DR

£275,000

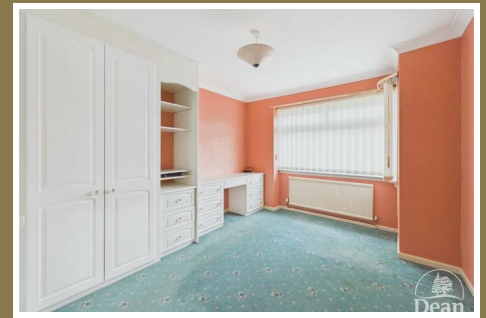


Nestled on the charming Woodside Avenue in Cinderford, this delightful semi-detached house, built in 1954, offers a perfect blend of classic character and modern convenience. With three spacious reception rooms, this property provides ample space for both relaxation and entertaining, making it an ideal home for families or those who enjoy hosting guests.

The residence boasts three well-proportioned bedrooms, ensuring comfortable living for all occupants. The single bathroom is conveniently located, catering to the needs of the household with ease. The layout of the home is thoughtfully designed, allowing for a natural flow between the living spaces.

Outside, the property features parking for two vehicles, a valuable asset in this desirable area. The surrounding neighbourhood is known for its friendly community atmosphere and convenient access to local amenities, schools, and parks, making it a wonderful place to call home.

This semi-detached house on Woodside Avenue is not just a property; it is a place where memories can be made. With its appealing features and a lovely large garden in a prime location, it presents an excellent opportunity for those seeking a comfortable and inviting home in Cinderford.



#### Entrance Porch :

5'10" x 1'2" (1.80 x 0.38)

Entered via UPVC double glazed door, tiled floor, wooden glazed door and window to hallway.

#### Hallway :

5'10" x 13'6" (1.79 x 4.13)

Radiator, stairs to first floor, under stairs storage cupboard

#### Living Room :

11'6" x 12'11" (3.51 x 3.94)

Feature stone fireplace with gas fire inset, radiator, double glazed bay window to front aspect.

#### Dining Room :

9'1" x 18'1" (2.79 x 5.53)

Radiator, UPVC patio doors to conservatory.

#### Conservatory :

7'7" x 7'3" (2.33 x 2.21)

UPVC double glazed windows, laminate wood effect flooring, radiator, wall lighting,

#### Kitchen :

6'11" x 13'8" (2.12 x 4.18)

Matching wall and base cabinets, composite 1.5 bowl sink and drainer, space for electric cooker, extractor fan, integrated washing machine,

dishwasher, UPVC double glazed windows to side and rear aspects. Large pantry with shelving and double glazed window to side aspect.

#### Cloakroom :

2'2" x 5'9" (0.68 x 1.76)

Low level WC, partially tiled walls, UPVC double glazed window to rear aspect

#### Side Porch :

3'0" x 6'1" (0.92 x 1.86)

UPVC double glazed windows and door to garden.

#### First Floor Landing :

4'0" x 9'1" (1.23 x 2.79)

UPVC double glazed window to side aspect, doors to bedrooms and bathroom.

#### Bedroom 1 :

10'5" x 13'1" (3.20 x 4.01)

Fitted wardrobes, vanity unit and drawers, radiator, UPVC double glazed bay window to front aspect.

#### Bedroom 2 :

10'5" x 11'9" (3.18 x 3.59)

Radiator, UPVC double glazed window to rear aspect with far reaching woodland views.

### Bedroom 3 :

7'1" x 6'10" (2.16 x 2.09)

Radiator, UPVC double glazed window to front aspect.

### Bathroom :

6'11" x 6'7" (2.11 x 2.02)

White suite comprising of bath with shower over, low level WC, pedestal wash hand basin, fully tiled throughout, fitted storage cupboard, radiator, UPVC double glazed window to rear aspect.

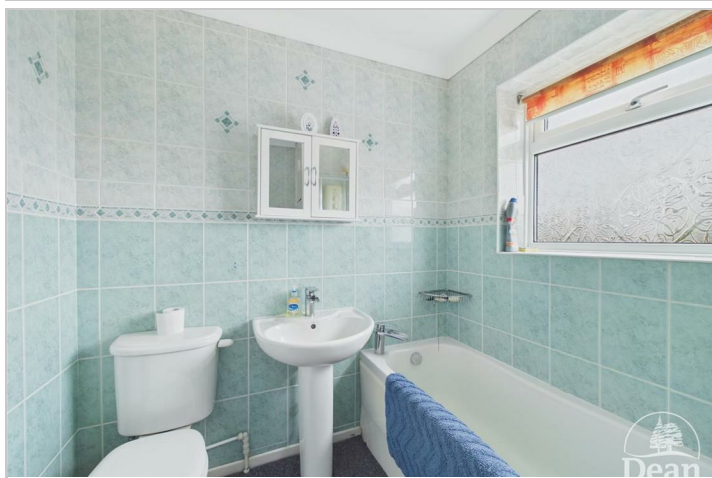
### Outside :

Front - Double gates to the driveway and garage, paved patio, borders with mature shrubs and hedging, side pedestrian gate to rear garden.

Rear - A large lawned garden with flowers and shrub borders, vegetable garden, brick built shed with power and lighting, two further wooden sheds, large patio adjacent to the house. There is access underneath the kitchen to a small area containing the gas boiler

### Garage :

With power and light.



Consumer Notes: Dean Estate Agents Ltd have prepared the information within this website/brochure with care and co-operation from the seller. It is intended to be indicative rather than definitive, without a guarantee of accuracy. Before you act upon any information provided, we request that you satisfy yourself about the completeness, accuracy, reliability, suitability or availability with respect to the website or the information, products, services, or related graphics contained on the website for any purpose.

These details do not constitute any part of any Offer, Contract or Tenancy Agreement.

Photographs used for advertising purposes may not necessarily be the most recent photographs, although every effort is made to update photographs at the earliest opportunity. Any reliance you place on such information is therefore strictly at your own risk. All photographic images are under the ownership of Dean Estate Agents Ltd and therefore Dean Estate Agents retain the copyright.

You must obtain permission from the owner of the images to reproduce them.

Tenanted Property – we are not always able to show the most recent condition of a property due to tenants' privacy and we may choose to show the photographs of the property when it was last vacant to at least allow clients some idea of the internal condition. Therefore, we would of course, urge you to view before making any decisions to purchase or rent the property and before any costs.

Energy Performance Certificates are supplied to us via a third party and we do not accept responsibility for the content within such reports.

PRC Certificates – Some ex-local authority properties have been repaired in recent years using the PRC Scheme wherein a certificate has been produced by a qualified property engineer. This certificate does not imply the suitability for a mortgage approval and you must satisfy yourself of the work carried out that may meet your lenders criteria.

As with leasehold property or new build development sites, you are likely to be responsible for a contribution to management charges and/or ground rent or a contribution to the development service charge. Please enquire at the time of viewing.

You may also incur fees for items such as leasehold packs and, in addition, you will also need to check the remaining length of any lease before you complete a mortgage application form.

Please ask a member of our team for any help required before committing to purchase a property and incurring expense.

## Road Map



## Hybrid Map



## Terrain Map



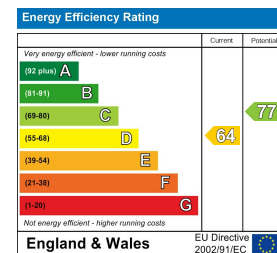
## Floor Plan



## Viewing

Please contact our Cinderford Office on 01594 825574 if you wish to arrange a viewing appointment for this property or require further information.

## Energy Efficiency Graph



These particulars, whilst believed to be accurate are set out as a general outline only for guidance and do not constitute any part of an offer or contract. Intending purchasers should not rely on them as statements of representation of fact, but must satisfy themselves by inspection or otherwise as to their accuracy. No person in this firm's employment has the authority to make or give any representation or warranty in respect of the property.