



28, Barton Drive, Barton on Sea, New Milton, BH25 7JJ

£470,000

Mitchells
1963 — TODAY



*28 Barton Drive
Barton on Sea
New Milton
Hampshire
BH25 7JJ*

An individual three bedroom, two reception room detached chalet style bungalow, situated in a peaceful location within easy walking distance of Barton on Sea clifftop and beach. Other features of the property include a first floor bedroom and shower room, a UPVC double glazed conservatory, private gardens, and within easy reach of New Milton town centre and the open forest of the New Forest National Park.

- Porch
- Entrance Hall
- Sitting Room
- Dining Room
- Conservatory
- Kitchen
- Two Ground Floor Bedrooms
- Shower Room
- Cloakroom
- First Floor Landing



The Property

UPVC double glazed entrance porch with tiled flooring.

Entrance hall with twin coat cupboards and an airing cupboard.

Good sized sitting room with a fireplace with stone backing and hearth, a double aspect, and a glazed door leading to the conservatory.

The conservatory is of UPVC double glazed construction, with tiled flooring and a private outlook over the gardens.

Separate dining room with stairs to the first floor and a private outlook to the front.

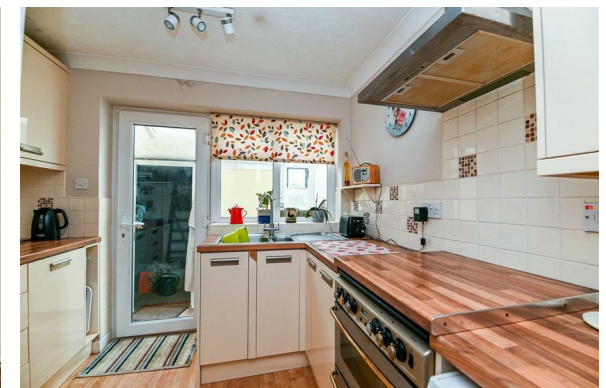
Kitchen fitted with a range of cream wall and base units, contrasting timber effect worktops, and an inset one and a half bowl sink unit with a mixer tap over. There is space for a cooker, washing machine, slimline dishwasher, and tall fridge/freezer. Along with part tiled walls and timber effect flooring.

Side lobby providing access to both the front and rear gardens.

Fully tiled ground floor shower room, fitted with a white suite, with an adjacent separate cloakroom.

First floor landing with a double glazed Velux window, large storage cupboard, and ample space for a computer desk.

First floor double bedroom with a double glazed Velux window and a fully tiled en-suite shower room fitted with a white suite.





Gardens & Grounds

The property sits on a mature and private plot, with a block paved driveway providing off road parking and leading to a detached single garage. The remainder of the front garden is laid mainly to lawn, with high level mature hedging offering privacy from the road.

To the rear of the property, there is a textured paved patio area adjoining the house, with the rest of the garden laid mainly to lawn. It features mature, well stocked flower and shrub borders, a timber garden shed, a greenhouse, and enjoys a high degree of privacy and seclusion.



Services

Mains gas, electricity, water and drainage

Council Tax Band: C

Energy Performance Certificate (EPC) Rating:

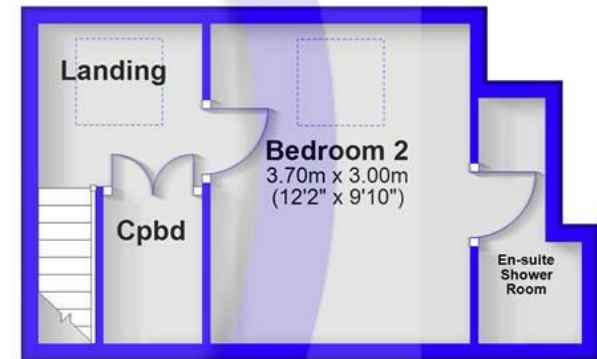
Ground Floor

Approx. 111.7 sq. metres (1201.8 sq. feet)



First Floor

Approx. 21.5 sq. metres (231.3 sq. feet)



Total area: approx. 133.1 sq. metres (1433.1 sq. feet)

Situation

Barton on Sea, a charming suburb of New Milton, enjoys a prime location along a picturesque stretch of the Solent coastline. With sweeping views across Christchurch Bay to the Isle of Wight and access to stunning coastal walks in both directions, it's a haven for nature lovers and outdoor enthusiasts. Its popularity is further enhanced by proximity to the open landscapes of the New Forest National Park, direct mainline rail links to London Waterloo, and a range of high-quality amenities. These include excellent schools, fine dining at the renowned Chewton Glen Hotel and Pebble Beach restaurant, and a 27-hole links-style golf course. Offering a perfect blend of natural beauty, convenience, and luxury, Barton on Sea continues to attract those seeking an exceptional coastal lifestyle.





Mitchells.uk.com
info@mitchells.uk.com
01425 616411

Centenary Buildings
8-10 Old Milton Road
New Milton
Hampshire
BH25 6DT

Mitchells
1963 — TODAY

