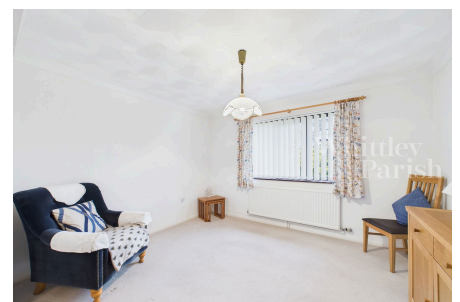


St Marys Close, Newton Flotman

Guide Price £260,000

4 1 2



Located within walking distance of village amenities and excellent public transport links, this well presented three/four bedroom semi-detached chalet offers comfortable and practical living throughout. The accommodation features a most generous sized living room with ample space for dining table and chairs. A spacious kitchen provides plenty of storage. The downstairs bedroom offers versatility and could easily be used as a work from home office space. The first floor landing leads to three double bedrooms and the family bathroom. Outside, the property boasts an elevated plot with a hard standing driveway and further shingle area giving plenty of off-road parking space. The low maintenance rear garden is perfect for those who prefer to spend time enjoying their home rather maintaining it.

Key Features

- No onward chain
- Walking distance to amenities
- Bus route to Norwich
- Low maintenance rear garden
- 3/4 bedrooms
- Freehold
- EPC Rating C
- Council Tax Band C

