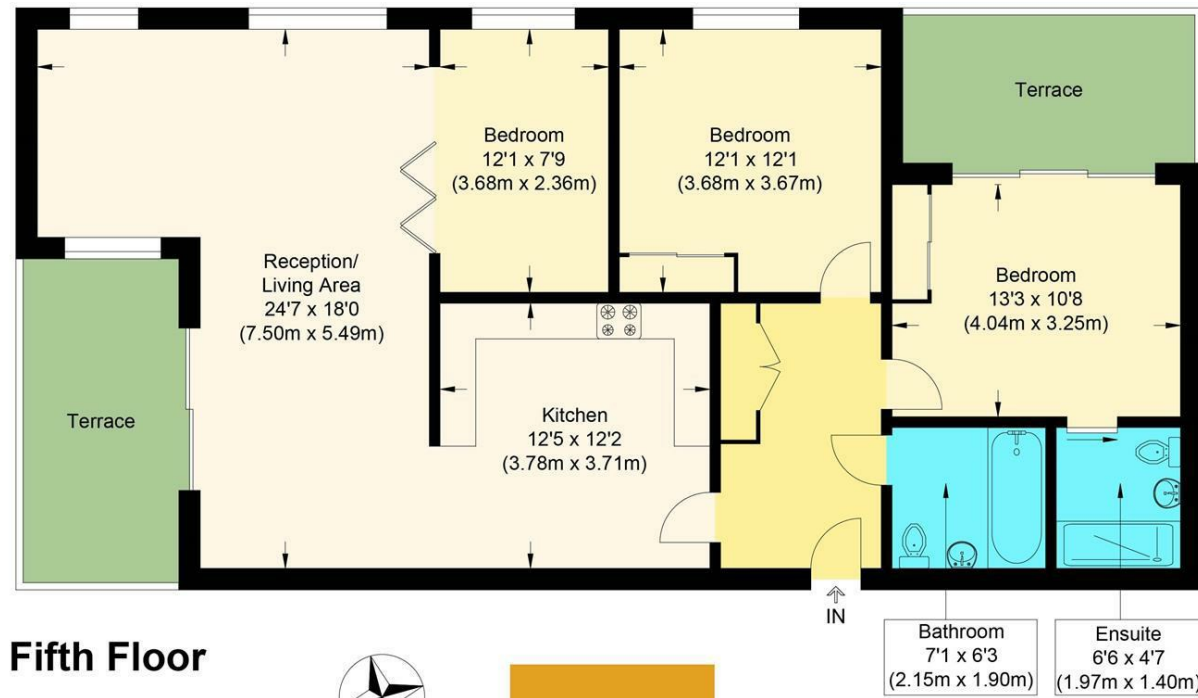


Floor Plan

BRICKS.

ESTATE AGENTS



Fifth Floor



Legacy House




Approximate Gross Internal Floor Area : 101.10 sq m / 1088.23 sq ft
Illustration for identification purposes only, measurements are approximate, not to scale.

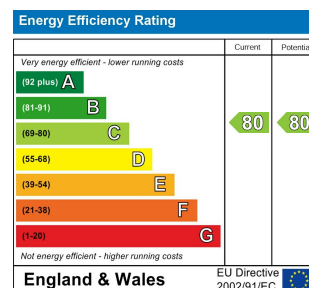


£4,250 Per month

These particulars, whilst believed to be accurate are set out as a general outline only for guidance and do not constitute any part of an offer or contract. Intending purchasers should not rely on them as statements of representation of fact, but must satisfy themselves by inspection or otherwise as to their accuracy. No person in this firm's employment has the authority to make or give any representation or warranty in respect of the property.

Contact Us

-  0203 634 9998
-  hello@bricksestateagents.co.uk
-  186 Queens Road, Buckhurst Hill, Essex, IG9 5BD



508 Legacy House, Roach Road, London, E3 2PA

Prepare to be amazed by this stunning three-bedroom penthouse apartment, brought to you by Bricks Estate Agents. Located in the highly sought-after area of Hackney Wick, this property is a true gem.

Step inside and be greeted by an immaculately presented living space, finished to the highest standards. The apartment boasts three spacious double bedrooms, one of which features an en-suite and its own balcony with breathtaking views of The City of London and Canary Wharf. The large open plan living area is flooded with natural light, thanks to the floor-to-ceiling double aspect windows.

The kitchen is a masterpiece, with its seamless high specification finish. Featuring stone worktops, fully integrated Siemens/Smeg appliances, and ample cupboard storage, it is a dream for any aspiring chef.

Additional highlights of this property include a modern family bathroom, bespoke fitted wardrobes in two bedrooms, and beautiful wooden flooring throughout. As a resident, you will also have exclusive access to a communal landscaped rooftop terrace garden, offering panoramic views of the canal, Queen Elizabeth Olympic Park, and West Ham United F.C. Stadium.

Hackney Wick is a prime location, with Hackney Wick Station, Stratford International, and local DLR stations just a short walk away. The area is buzzing with a vibrant mix of bars and restaurants, and you'll have the luxury of Victoria Park and Queen Elizabeth Olympic Park Gardens right on your doorstep. With over 560 acres of parkland and world-class sporting facilities, as well as the added benefit of Canal side living along the Lea canal, this property truly offers the best of both worlds.

508 Legacy House, Roach Road, London, E3 2PA



- Available In July 2026
- High Specification Throughout
- Three Double Bedrooms
- Flooding With Natural Light
- Panoramic Views

Entrance Hall

Reception/Living Area

24'7" x 18'0" (7.50 x 5.49)

Kitchen

12'4" x 12'2" (3.78 x 3.71)

Main Bedroom

13'3" x 10'7" (4.04 x 3.25)

En-Suite

6'5" x 4'7" (1.97 x 1.40)

Terrace One

Bedroom Two

12'0" x 12'0" (3.68 x 3.67)

Family Bathroom

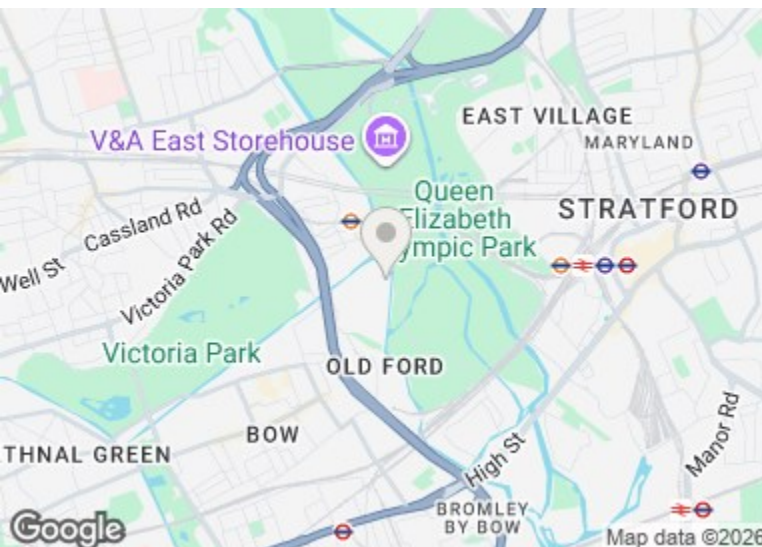
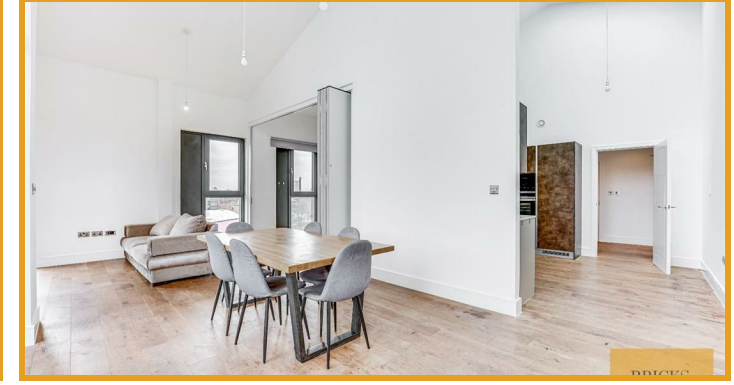
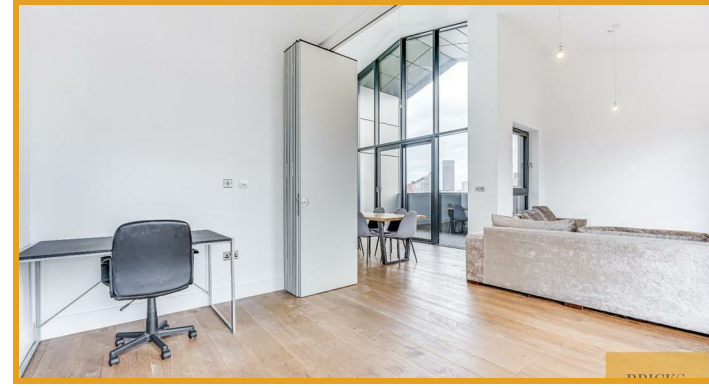
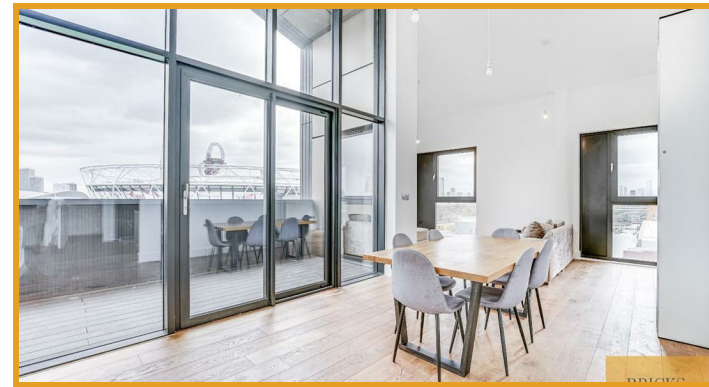
7'0" x 6'2" (2.15 x 1.90)

- *WATCH OUR VIDEO TOUR*
- Penthouse Apartment
- Open Plan Living
- Floor To Ceiling Double Aspect Windows
- Communal Rooftop Terrace Garden

Bedroom Three

12'0" x 7'8" (3.68 x 2.36)

Main Terrace



Directions

BRICKS.

ESTATE AGENTS