



6 The Orchards, Hucclecote GL3 3RL
Offers In Excess Of £700,000



6 The Orchards, Hucclecote GL3 3RL

• Five reception rooms • Four en suite shower rooms and family bathroom • Potential annex • Off road parking for several vehicles • Detached home circa 2262 sq. ft. • Good size and enclosed garden • Quiet cul-de-sac location • Detached garden room/office/workspace • Gloucester City Council, Tax Band F - £3,391.80 per annum 2026/27 • EPC rating - D65



59 Hucclecote Road, Hucclecote, Gloucestershire, GL3 3TL

01452 941950

hucclecote@naylorpowell.com

www.naylorpowell.com

Offers In Excess Of £700,000

Entrance Hall

Double-glazed windows to front elevation, stairs to first floor, an understairs cupboard, and doors to downstairs living accommodation.

Living Room

Double-glazed bay window to front elevation, feature stone fireplace with inset gas fireplace, double doors to;

Dining Room

Double-glazed windows to rear elevation, two sets of french doors leading to rear garden, double doors to;

Family Room

Radiator, built in shelving unit.

Kitchen/Breakfast Room

Double-glazed window to rear elevation, Velux windows, matching wall and base units with work surfaces over, wall tiling, one and a half bowl sink, range style

cooker with five ring induction hob with overhead extractor fan, integrated dishwasher, space for American style fridge freezer, radiator, door to rear garden, door to;

Utility Room

Matching wall and base units with work surfaces over, space for washing machine, space for dryer, radiator, door to;

Walkway

Door to front of property, gate to rear garden, door to;

Double Garage/Games Room

16'2" x 16'0" (4.94 x 4.90)

Garage door, power, electric heater.

Study

Double-glazed window to front elevation, radiator, built-in cupboard housing wall mounted gas boiler.



Cloakroom

Double-glazed obscure window to side elevation, WC, wash hand basin, heated towel rail.

First Floor Landing

Double-glazed window to front elevation, doors to all bedrooms and bathroom, storage cupboard, radiator.

Master Bedroom

Double-glazed windows to front elevation, radiator, built in wardrobes, door to;

Ensuite

Double-glazed obscure window to rear elevation, WC, built-in worktop, hand wash basin, shower cubicle.

Bedroom 2

Double-glazed window to front elevation, built in wardrobes, overhead cupboards, built in work top, radiator, door to;

Ensuite

Double-glazed obscure window to rear elevation, WC, wash hand basin, shower cubicle.

Bedroom 3

Double-glazed window to rear elevation, built in wardrobe with sliding doors, radiator, door to;

Ensuite

WC, Wash hand basin, shower cubicle.

Bedroom 4

Double-glazed window to front elevation, built in wardrobe with sliding doors, radiator, door to;

Ensuite

WC, wash hand basin, shower cubicle.

Family Bathroom

Double-glazed obscure window to rear elevation, bath with shower head, WC, wash hand basin, heated towel rail, built in storage cupboard.

Outside

To the front of the property are two driveways providing off road parking for multiple vehicles, lawn area with a paved footpath, silver birch tree and a range of mature plants. To the rear of the property is a storage shed, a lawned and patio area, a range of mature shrubs and a garden room which is currently used as a home office.

Garden Room

15'3" x 7'4" (4.66 x 2.26)

French doors, Double-glazed windows, power, electric heater.

Location

Located within the popular area of Hucclecote, where there are various local amenities, including the local junior schools Hillview and Dinglewell, as well as



access to several secondary and grammar schools located within the city. A short distance away is access to the M5, providing ideal links to Birmingham and Bristol, while a direct line to London Paddington can be located at Gloucester Station.

Material Information

Tenure - Freehold

Council Tax Band F
Gloucester City Council - £3,391.80 per annum 2026/27

Electricity supply: Mains

Water supply: Mains

Sewerage: Mains

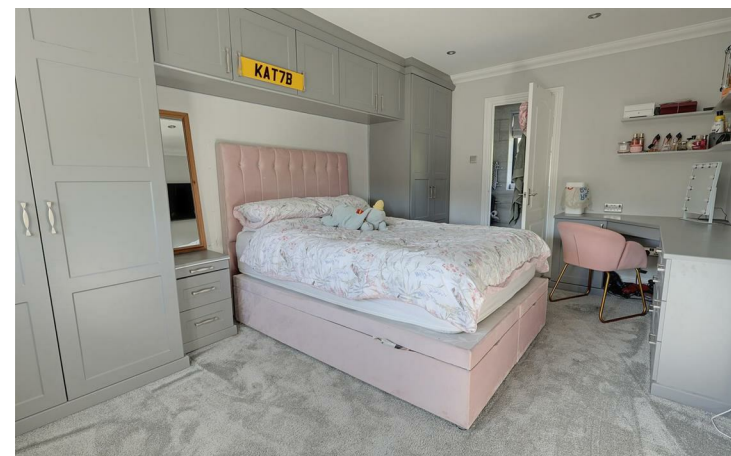
Heating: Gas central heating

Broadband speed: Standard 13 Mbps,

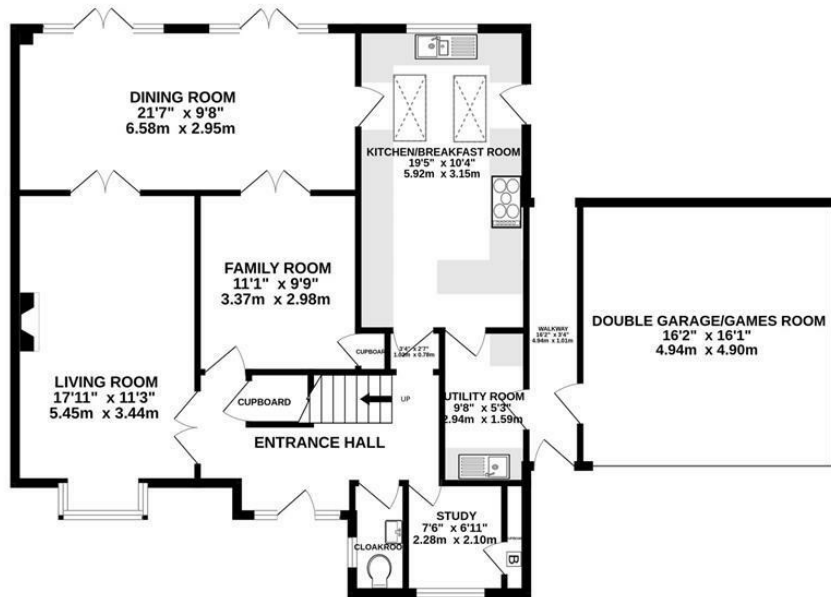
Superfast 52 Mbps

Mobile phone coverage: Vodafone

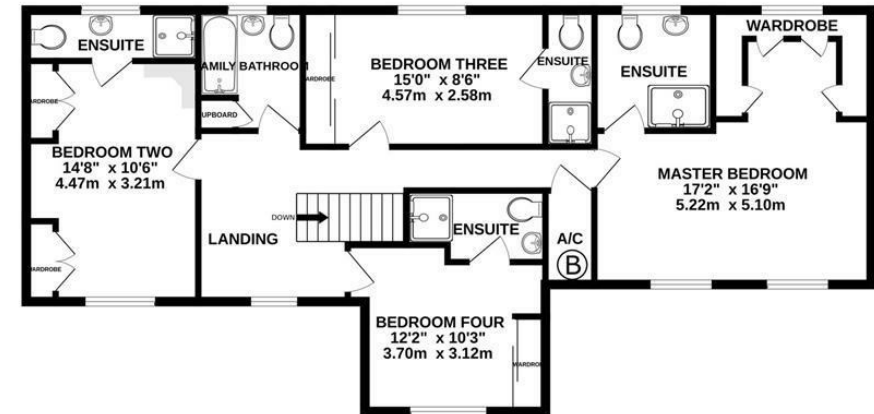
(Likely), EE (Likely), Three (Limited) and O2 (Likely)



GROUND FLOOR
1280 sq.ft. (118.9 sq.m.) approx.



1ST FLOOR
984 sq.ft. (91.4 sq.m.) approx.



TOTAL FLOOR AREA : 2263 sq.ft. (210.3 sq.m.) approx.

Whilst every attempt has been made to ensure the accuracy of the floorplan contained here, measurements of doors, windows, rooms and any other items are approximate and no responsibility is taken for any error, omission or mis-statement. This plan is for illustrative purposes only and should be used as such by any prospective purchaser. The services, systems and appliances shown have not been tested and no guarantee as to their operability or efficiency can be given.
Made with Metropix ©2025

59 Hucclecote Road, Hucclecote, Gloucestershire, GL3 3TL | Tel: 01452 941950 | Email: hucclecote@naylorpowell.com | www.naylorpowell.com

Disclaimer: These particulars do not form part of any contract and no responsibility is accepted for any errors or omissions in any statement made, whether verbally or written for or on behalf of Naylor Powell.

Floorplans have been prepared for identification purposes only, they are not to scale and no guarantee can be given as to their accuracy.

Prospective purchasers please be aware none of the appliances, boiler, heaters etc. which may have been mentioned in these particulars have been tested and no guarantee can be given that they are in working order. Prospective purchasers should arrange for such items to be tested at their own expense.

