



**Sidney Square, E1**  
£1,450,000



## Sidney Square, E1

An impressive three bedroom, Grade II listed town house located in the heart of Whitechapel. Spread over four stories, this recently refurbished property, including a new roof, combines contemporary living with sought after period features. The house comprises a double reception room with fireplace, a separate dining room leading through to a contemporary galley kitchen with integrated appliances, two large double bedrooms, a third guest double bedroom and two luxury bathrooms.

Sidney Square is set within a convenient location between Stepney Green and Whitechapel. The area provides access to a wide array of bars, restaurants, boutique cafés and shopping venues as well as being very well connected with easy access to Whitechapel underground station (Elizabeth, District, Hammersmith & City and Overground lines) and Shadwell (Overground and DLR lines) for travel to the City, Canary Wharf, and beyond.

### Features

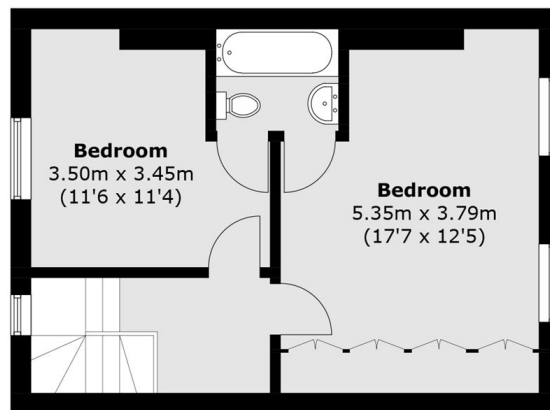
- Three Double Bedrooms
- Two Bathrooms
- Modern
- Period Features
- Private Garden
- Central Location



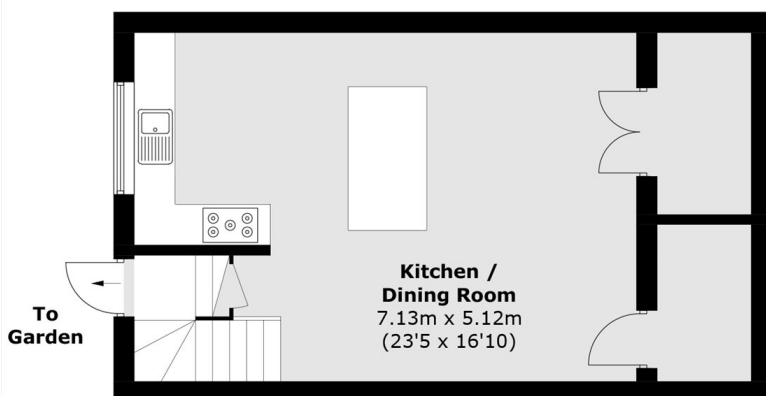
# Sidney Square, London, E1



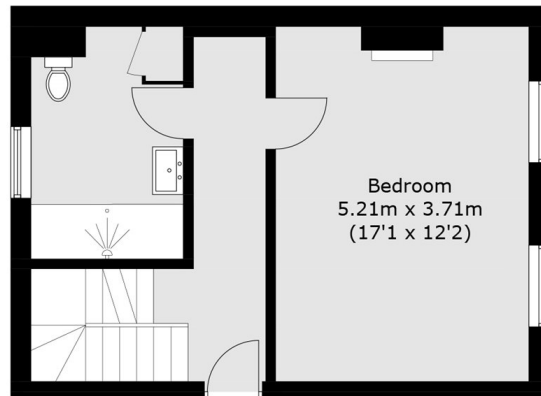
**First Floor**



**Second Floor**



**Lower Ground Floor**



**Ground Floor**

Total area (approx.): 164.3 sq. m (1768.4 sq. ft)