



Fern Lawn, Abbeydale, Gloucester, GL4 5XS
Gloucester

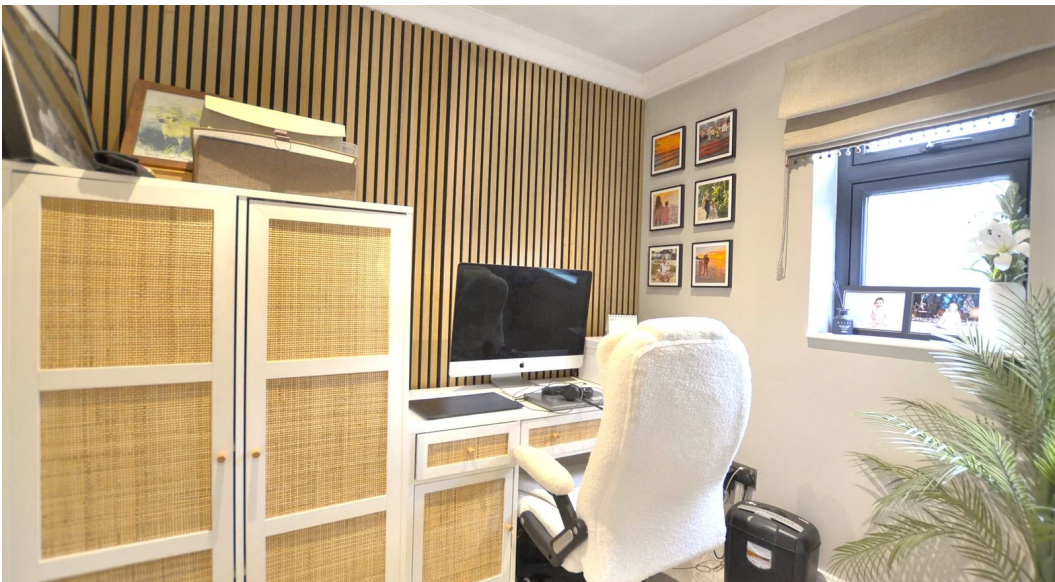
Offers Over
£500,000

Bedrooms: 4 | Bathrooms: 2 | Receptions: 2

Daryl Hill powered by eXp is delighted to present to the market this remarkably sized bungalow in this popular suburban location. The much extended and improved home provides flexible accommodation which can be configured to suit a variety of needs with 3 large double bedrooms, complemented by three reception spaces and conservatory. The home has the unusual luxury of an en-suite shower room to complement the family bathroom and the property is completed with a spacious utility room. The outside has also been improved with a block paved driveway parking leading to double width garage and with gardens to front, side and rear.

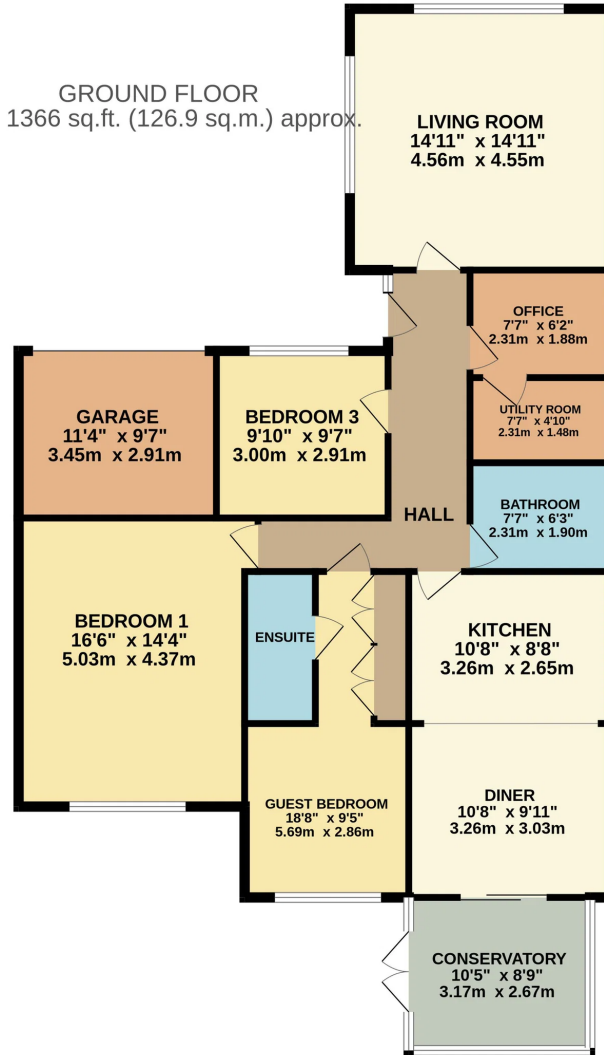
Viewing comes highly recommended. Quote Ref DH0109







GROUND FLOOR
1366 sq.ft. (126.9 sq.m.) approx.



TOTAL FLOOR AREA: 1366 sq.ft. (126.9 sq.m.) approx.

Whilst every attempt has been made to ensure the accuracy of the floorplan contained here, measurements of doors, windows, rooms and any other items are approximate and no responsibility is taken for any error, omission or mis-statement. This plan is for illustrative purposes only and should be used as such by any prospective purchaser. The services, systems and appliances shown have not been tested and no guarantee as to their operability or efficiency can be given.
Made with Metropix ©2026

Daryl Hill
6 Romney Close Gloucester GL1 5NT

07921 060 390
Daryl.hill@expuk.com
<https://darylhill.exp.uk.com/>