

EASBY MEWS

RICHMOND

LOVE PROPERTY. 

LOVE THE JOURNEY



Easby, Richmond

Richmond is a scenic Georgian market town on the edge of the Yorkshire Dales, offering a well-balanced lifestyle with a good range of local amenities, including schools, independent shops and cafés. It appeals to those seeking community, with excellent access to walking, cycling and the wider Dales, while remaining within reach of larger centres via nearby road and main line rail links.

Easby itself offers a setting that feels tucked away, yet remains well-connected. With walks along the river, Easby Abbey close by, and Richmond just a short drive away, it's a location that is ideal for downsizers, couples, or those looking for a quieter base





Home Lodge

1000000000

Welcome home...

Set within a horseshoe courtyard shared by just a handful of homes, there's an immediate sense of calm. You'll find your own parking and a private garage just steps from your door.

Inside, the kitchen welcomes you first, setting the tone for the home. Exposed beams and solid flooring create a grounded, traditional feel. In here, there's space for integrated appliances; it feels practical yet full of character. Just off here, a utility room and WC keep the day-to-day running of the home neatly organised.

The living room is a space to properly unwind. Stone flooring underfoot and a log-burning stove, somewhere that naturally draws you in during cooler evenings. Beyond this, the garden room opens up the rear of the home, offering a lighter, more adaptable space that works equally well as a dining area or second sitting room. With patio doors leading straight out, it connects easily to the garden and brings the outside in.





Upstairs...

Upstairs, the two bedrooms offer flexibility. The main bedroom looks out over the garden, while the second lends itself to a child's room, guest space, or a home office setup. The shower room is fresh and simple, finished with white tiling and patterned flooring.





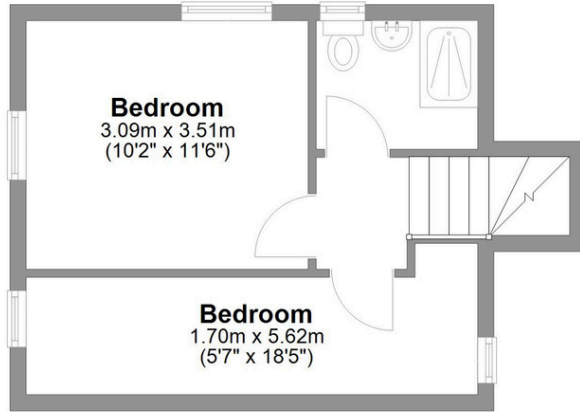


Outside...

Stepping outside, the garden becomes a key part of how the home is lived in. A gravelled area directly off the garden room is well placed for outdoor dining, before the space opens out onto a lawn. Divided into two sections, it offers a sense of depth and privacy, with a small pond adding a natural focal point. Whether it's gardening, relaxing, or simply enjoying the quiet surroundings, it's a space that invites you to slow down.



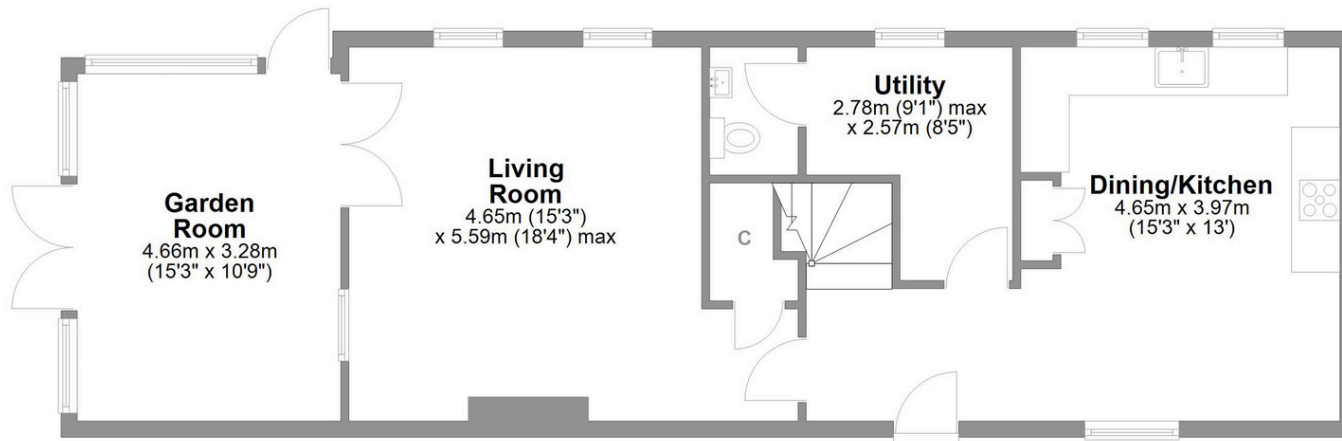




First Floor
Approx. 28.5 sq. metres (306.6 sq. feet)

Easby Mews Easby, Richmond

Total area: approx. 102.4 sq. metres (1102.2 sq. feet)



Ground Floor
Approx. 73.9 sq. metres (795.6 sq. feet)



LOVE PROPERTY.

Whilst every attempt has been made to ensure the accuracy of the floorplans contained here, measurements of doors, windows, rooms and any other items are approximate and no responsibility is taken for any error, omission or mis-statement. This plan is not drawn to scale and is for illustrative purposes only & should be used as such by any prospective purchaser. Created especially for Love Property by Vue3sixty Ltd