



CEDARS COURT, SW15

£160,000

- Over 55s development
- One bedroom apartment
- Lift access
- Communal gardens
- Top floor
- Off street parking



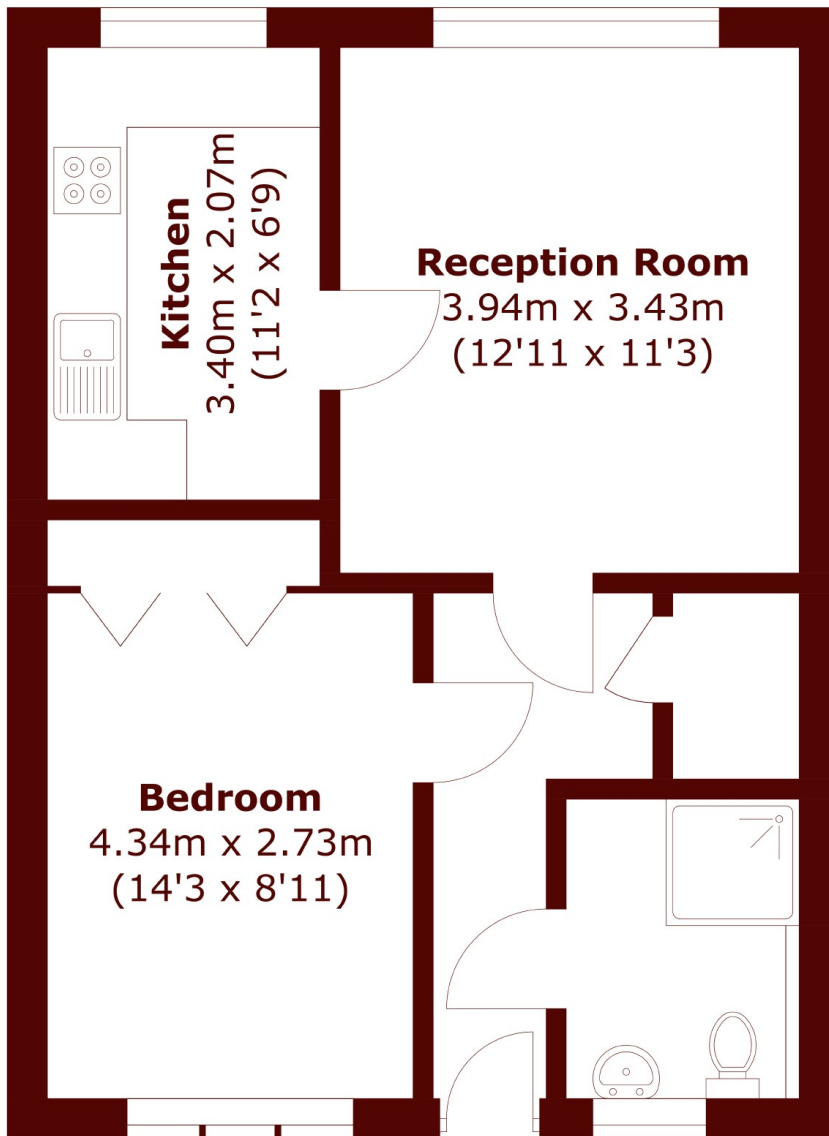
ABOUT THE PROPERTY

This one bedroom top floor apartment with a lift is within close proximity to Roehampton Village and Richmond Park. The flat comprises of one double bedroom with fitted cupboards, spacious reception room, separate kitchen and shower room. Also benefiting from off street car parking (first come first served) and a well maintained communal garden. Our facilities include a communal reception room for the use of all residents.

There are good transport links to Putney and Wimbledon which means you're never too far from major shopping centres. Open to over 55s only with great transport links and local amenities.



STEP INSIDE CEDARS COURT



Total area (approx.): 44.7 sq. m (481.1 sq. ft)

Barnes & East Sheen
020 8563 8333

Energy Rating: C We aim to make our particulars both accurate and reliable. However, they are not guaranteed; nor do they form part of an offer or contract. If you require clarification on any points then please contact us, especially if you're traveling some distance to view. Please note that appliances and heating systems have not been tested and therefore no warranties can be given as to their good working order

**MARSH &
PARSONS**