



Christchurch Road

Guide Price £180,000 - £190,000

- Guide Price £180,000 - £190,000
- Bright Reception Rooms with Open-Plan Archway
- Spacious Kitchen/Breakfast Room with Breakfast Bar
- Fully Enclosed Rear Garden
- Close to Beechwood Park, amenities and transport links
- Ideal for First-Time Buyers or Investors
- EPC Rating: D



Pinkmove

01633 746088
team@pinkmove.co.uk



Pinkmove

About the property

This well-presented two double bedroom mid-terraced home is set in a convenient area of Newport, close to amenities, Beechwood Park, public transport and main road networks. Offering bright spaces and a peaceful rear garden, it is ideal for first-time buyers or investors.

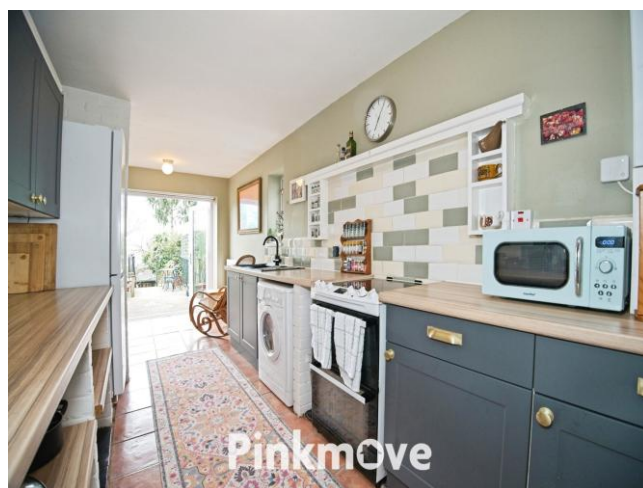
The current owner describes the home as “filled with beautiful natural light, with sunsets that have been something special.” It has hosted many happy memories, especially family gatherings on the patio. The bottom of the garden provides real peace and privacy, creating a little haven close to city conveniences, with Beechwood Park just up the road.

The hallway leads to all ground-floor rooms. The reception spaces are connected by an open archway, creating a sociable flow with room for seating and dining. The kitchen/breakfast room to the rear offers fitted units, space for appliances, a breakfast bar and direct access to the garden.

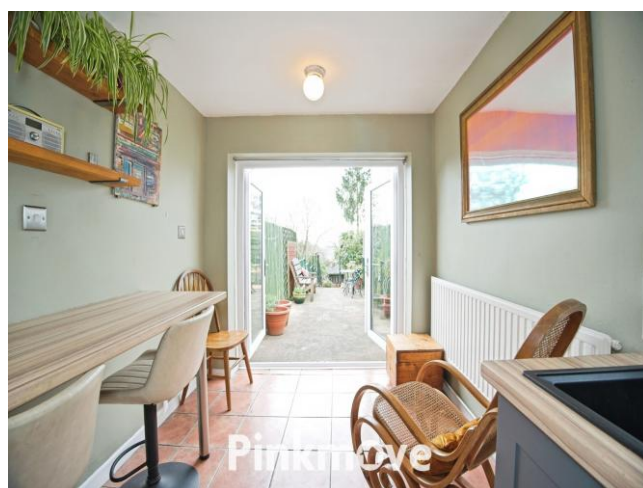
Upstairs, the landing leads to two double bedrooms. The bathroom features a white suite with WC, wash-hand basin and bath with shower attachment.

Outside, the enclosed rear garden includes mature plants, trees, shrubs and seating areas, ideal for relaxing or entertaining, and well suited to children or pets.

This charming property combines convenience, comfort and outdoor space, making it a fantastic opportunity for many buyers.



Pinkmove



Pinkmove



Accommodation

Reception Room

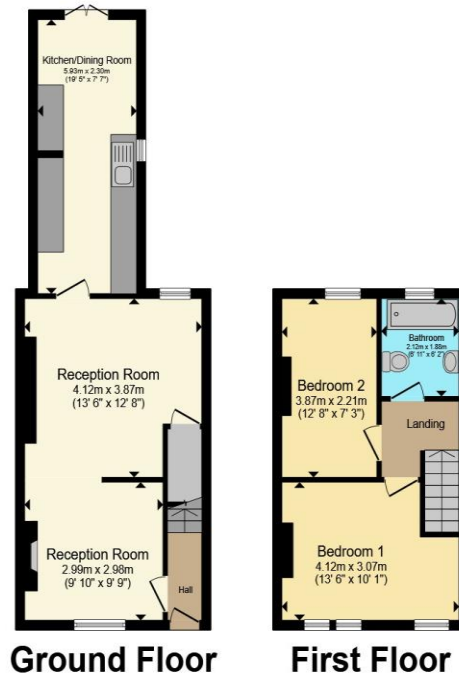
Kitchen

Bedroom 1

Bedroom 2

Bathroom

Floorplan



Total floor area 71.2 sq.m. (767 sq.ft.) approx

This floor plan is for illustrative purposes only. It is not drawn to scale. Any measurements, floor areas (including any total floor area), openings and orientation are approximate. No details are guaranteed, they cannot be relied upon for any purpose and they do not form part of any agreement. No liability is taken for any error, omission or misstatement. A party must rely upon its own inspection(s). Powered by www.localagent.com

Pinkmove

Important Information

Note while we endeavour to make our sales details accurate and reliable, if there is any point which is of particular interest to you, please contact the office and we will be pleased to confirm the position for you. We have not personally tested any apparatus, equipment, fixtures, fittings or services and cannot verify they are in working order or fit for their purposes. Nothing in these particulars is intended to indicate that carpets or curtains, furnishings or fittings, electrical goods (whether wired or not). Gas fires or light fittings or any other fixtures not expressly included form part of the property offered for sale. This computer generated Floorplan, if applicable, is intended as a general guide to the layout and design of the property. It is not to scale and should not be relied upon for dimensions. Tenure: We cannot confirm the tenure of the property as we have not had access to the legal documents. The buyer is advised to obtain verification from their solicitor or surveyor.

Peter Alan Limited is registered in England and Wales under company number 2073153. Registered Office is Cumbria House, 16-20 Hockliffe Street, Leighton Buzzard, Bedfordshire, LU7 1GN. VAT Registration Number is 500 2481 05. For activities relating to regulated mortgages and non-investment insurance contracts, Peter Alan Limited is an appointed representative of Connells Limited which is authorised and regulated by the Financial Conduct Authority. Connells Limited's Financial Services Register number is 302221. Most buy-to-let

