



Guide Price
£525,000

Freehold

4x  2x  1x 

**Whiffen Walk,
Bradbourne Fields, East
Malling, Kent, ME19**

OVER 60?

Secure this property
for up to **59% less!**

Wards
Helping you move forwards



Main features

- Well presented throughout
- Handy utility room & useful ground floor cloakroom
- Enjoy the luxury of both en-suite shower room & a bathroom
- Good schools, shops & leisure facilities all within easy reach
- Great for commuters - walk to East Malling station or hop onto the M20

Accommodation

GROUND FLOOR

- Entrance Hall
- Lounge: 15'1 x 11'2 (4.60m x 3.41m)
- Dining Area: 9'11 x 9'10 (3.02m x 3.00m)
- Conservatory: 10'8 x 9'10 (3.25m x 3.00m)
- Kitchen/Breakfast Room: 13'10 x 13'2 (4.22m x 4.02m)
- Utility: 5'7 x 4'10 (1.70m x 1.47m)
- Cloakroom

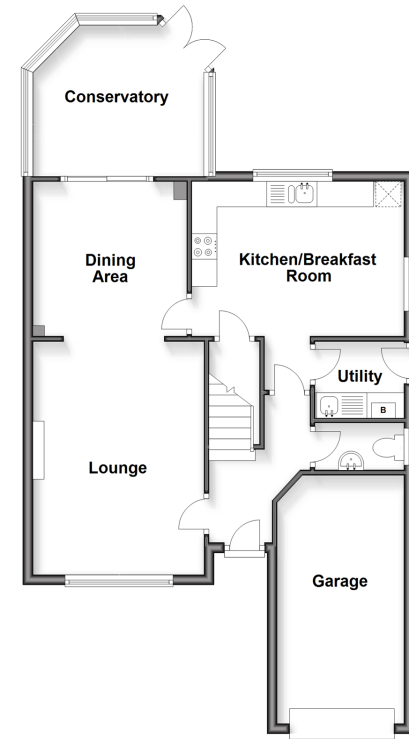
FIRST FLOOR

- Landing
- Bedroom 1: 13'1 x 11'2 (3.99m x 3.41m)
- En-Suite Shower Room
- Bedroom 2: 13'3 x 8'10 (4.04m x 2.69m)
- Bedroom 3: 9'8 x 9'1 (2.95m x 2.77m)
- Bedroom 4: 9'7 x 7'9 (2.92m x 2.36m)
- Bathroom

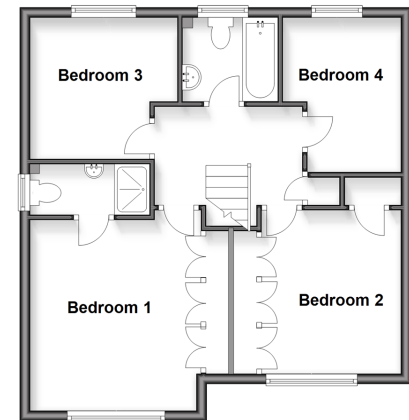
OUTSIDE

- Driveway & Garage
- Front & Rear Gardens

Ground Floor
Approx. 73.5 sq. metres (790.7 sq. feet)



First Floor
Approx. 54.6 sq. metres (588.0 sq. feet)



Call Larkfield - 01732 847877 ■ wardsof Kent.co.uk

- Legal advice should be taken to verify fixtures/fittings, planning, alterations and/or lease details
- Appliances & services are untested, dimensions are approximate and floor plans are not to scale
- Through a Homewise Home For Life Plan people aged 60+ can secure this property for up to 59% less, by purchasing a Lifetime Lease



12935738/20260224/CK/JT