

20 Coronation Road
North Walbottle
Newcastle upon Tyne
NE5 1PU

Offers Over
£325,000



20 Coronation Road
North Walbottle
Newcastle upon Tyne
NE5 1PU

- 4 Bedroom End Terrace House
- Enclosed South Facing Rear Garden
- Highly Sought After Location
- Gas Central Heating
- Council Tax Band C
- Great Open Plan Extension to the Rear
- Driveway Parking
- Utility & Downstairs w/c
- Sealed Unit Double Glazed Windows
- EPC tbc





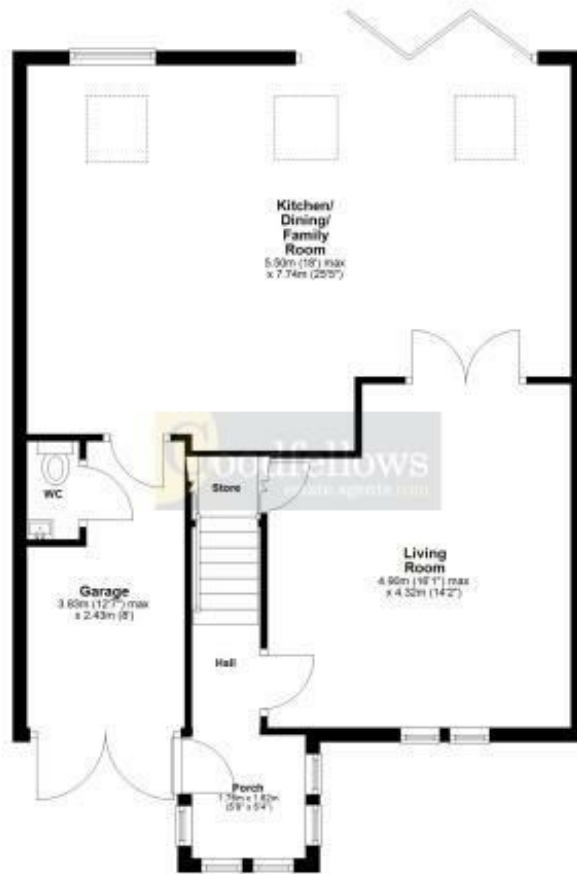


20 Coronation Road, North Walbottle, Newcastle upon Tyne, NE5 1PU



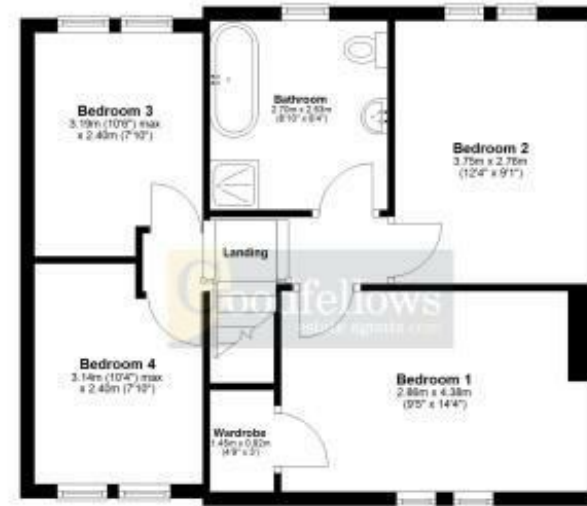
Ground Floor

Approx. 76.1 sq. metres (819.1 sq. feet)



First Floor

Approx. 52.3 sq. metres (562.6 sq. feet)



Total area: approx. 128.4 sq. metres (1381.7 sq. feet)

Whilst every attempt has been made to ensure the accuracy of the floor plan contained here, measurements of doors, windows, rooms and any other items are approximate and no responsibility is taken for any error, omission, or mis-statement. The Plan is for illustrative purposes only. Version 1

Plan produced using PlanUp.

EPC Rating: C
Council Tax Band: C

Whilst every care has been taken to prepare these particulars, they are for guidance purposes only. All measurements are approximate and whilst every care has been taken to ensure their accuracy, they should not be relied upon and potential buyers/tenants are advised to recheck the measurements. The agent has not tested any equipment, services, fixtures or fittings and makes no representation regarding their condition.

CONTACT

128 The Roman Way, West Denton,
Newcastle upon Tyne, NE5 5AD

E:
westdenton@goodfellowsestateagents.com
T: 0191 2677500

Goodfellows
estate agents.com