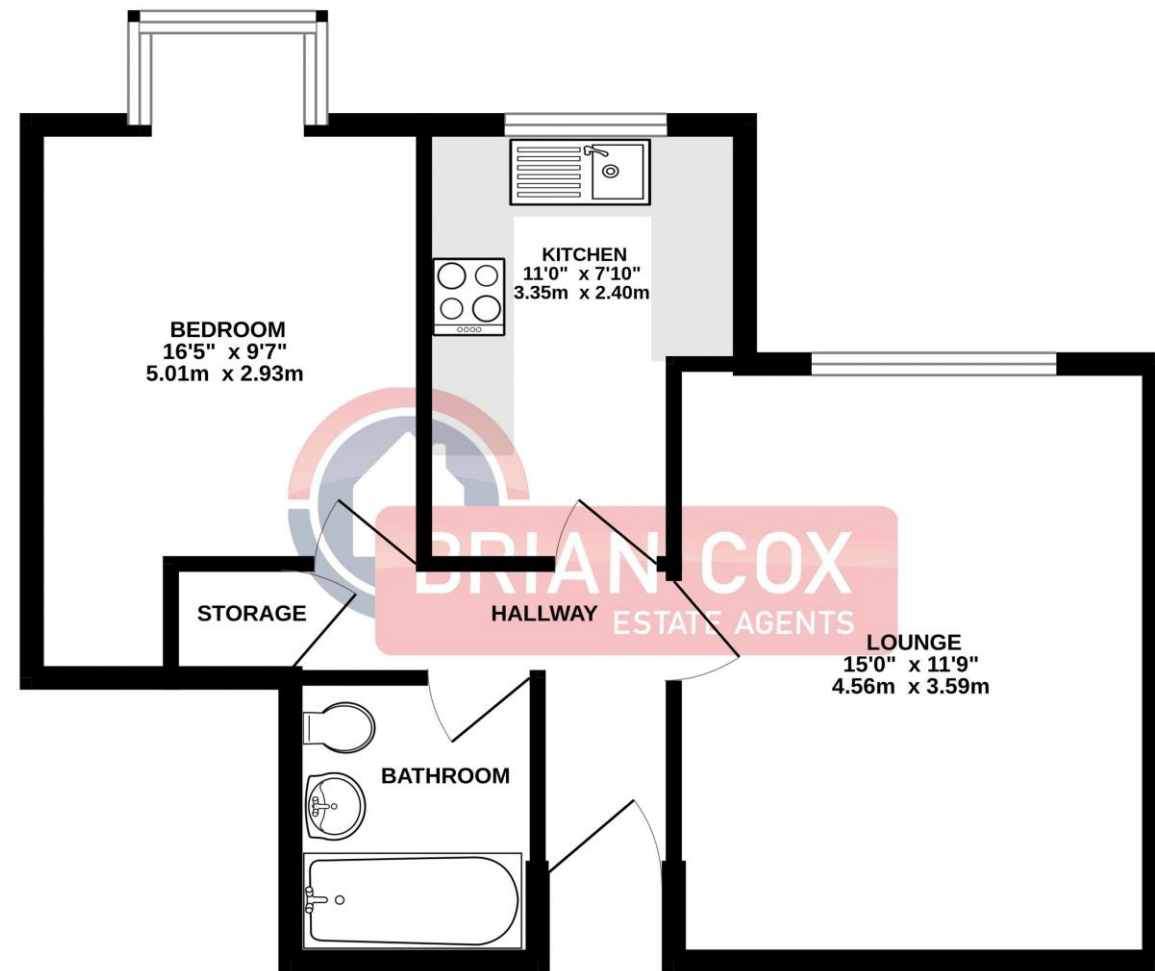


the floorplan...

GROUND FLOOR  
475 sq.ft. (44.1 sq.m.) approx.



TOTAL FLOOR AREA : 475 sq.ft. (44.1 sq.m.) approx.  
Whilst every attempt has been made to ensure the accuracy of the floorplan contained here, measurements of doors, windows, rooms and any other items are approximate and no responsibility is taken for any error, omission or mis-statement. This plan is for illustrative purposes only and should be used as such by any prospective purchaser. The services, systems and appliances shown have not been tested and no guarantee as to their operability or efficiency can be given.  
Made with Metropix ©2026

more details from...

call: **Brian Cox Harrow: 020 8912 0006**  
email: [info@brian-cox.co.uk](mailto:info@brian-cox.co.uk)  
web: [www.brian-cox.co.uk](http://www.brian-cox.co.uk)



Consumer Protection from Unfair Trading Regulations 2008 We have not tested any apparatus, equipment, fixtures, fittings or services and so cannot verify that they are in working order or fit for purpose. You are advised to obtain verification from your solicitor or surveyor. References to the tenure of a property are based on information supplied by the seller. We have not had sight of the title documents and a buyer is advised to obtain verification from their solicitor. Items shown in photographs are not included unless specifically mentioned within the sales particulars, but may be available by separate negotiation. We advise you to book an appointment to view before embarking on any journey to see a property, and check its availability.



020 8912 0006  
[brian-cox.co.uk](http://brian-cox.co.uk)



Tucked away in a convenient and well connected location, this charming one-bedroom ground floor apartment in Isobel House offers an ideal opportunity for first-time buyers, downsizers or investors alike.

The property boasts a bright and spacious 15ft lounge, perfect for both relaxing and entertaining, while the separate kitchen provides a practical and well defined cooking space. The generous double bedroom offers comfortable accommodation with ample room for storage, complemented by a well-appointed family bathroom.

Additional benefits include double glazing and gas central heating, ensuring year-round comfort and efficiency. Residents parking adds to the everyday convenience, while the property is offered to the market with no onward chain, making for a smooth and hassle-free purchase.

Situated in the heart of Harrow (HA1 2RX), Isobel House enjoys excellent access to local amenities, transport links and green spaces, making it a highly desirable place to call home.



£230,000  
Leasehold

Station Road, Harrow  
HA1 2RX



## in brief...

- One Bedroom
- Ground Floor Apartment
- Resident Parking
- No Chain
- Close to Local Amenities
- View Now



## the location...

### nearest stations ...

Harrow & Wealdstone (0.4 miles)  
Harrow-on-the-Hill (0.6 miles)  
Kenton (0.7 miles)

Harrow is a large suburban town in the London Borough of Harrow, North West London, England. It is centred 10.5 miles (16.9 km) North West of Charing Cross.

Harrow has two large shopping centres which are St Anns and St Georges with its many large department stores, restaurants, cafes and cinema.

There are many local schools in the area some of these include Marlborough Primary School, Elmgrove Primary School & Nursery, Whitefriars School and St Anselm's Catholic Primary School.

