



Updown Hill, Windlesham

£3,500 PCM



Updown Hill, Windlesham, GU20 6DX

Lovely refurbished home with flexible accommodation located in the heart of the village close to the local shops, gastro pubs and Field of Remembrance.

FEATURES

- Refurbished and decorated with stylish décor
- Log burner and hot tub
- Possible annexe type accommodation
- Built in wardrobes

ACCOMODATION

- Entrance hall/boot room with built in storage cupboards
- Sitting room with exposed brick chimney and log burner
- Open plan Kitchen/dining/family room with bifold doors to garden and utility cupboard
- Downstairs cloakroom
- Ground floor study/bedroom 4 with en-suite
- Three upstairs bedrooms
- Two further upstairs bath/shower rooms (Three in total)

OUTSIDE

- Large gravel driveway with ample parking
- Landscaped rear garden with patio

AVAILABLE

6th July 2026

FURNISHED/UNFURNISHED

Unfurnished

EPC RATING

C

DEPOSIT PAYABLE

£4,038

COUNCIL TAX

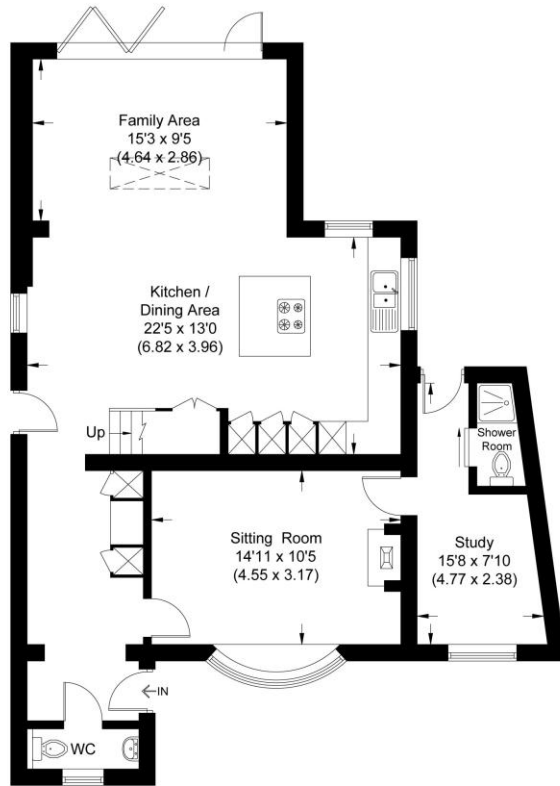
Surrey Heath – Band E



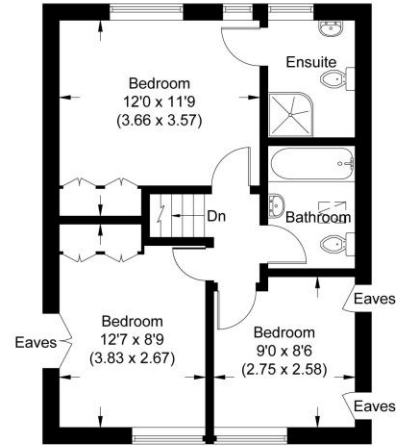


Updown Hill

Approximate Gross Internal Area 122.54 sq m / 1319.01 sq ft



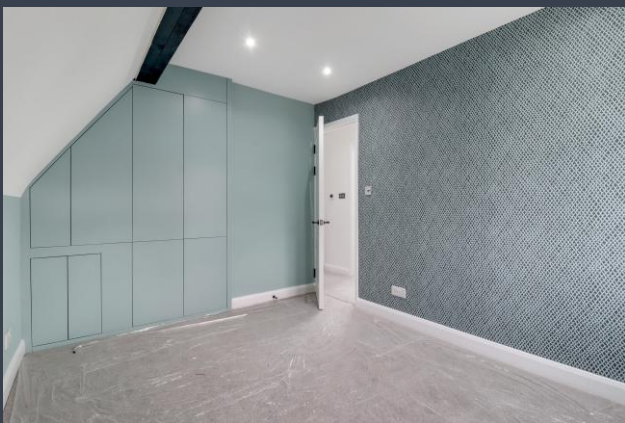
Ground Floor



First Floor

Illustration for identification purposes only,
measurements are approximate, not to scale.

Disclaimer: We wish to inform prospective tenants that we have prepared these sales particulars as a general guide. We have not carried out a detailed survey, nor tested the services, appliances and specific fittings. Room sizes are approximate and rounded: they are taken between internal wall surfaces and therefore include cupboards / shelves, etc.



**NEWTON ROWE**
SALES & LETTINGS

The Old Dairy, 7 Updown Hill, Windlesham, Surrey GU20 6AF
enquiries@newtonrowe.co.uk | 01276 986900