



Amber Court, 2 Arla Place - HA4 0FF
£320,000



LAWRENCE RAND

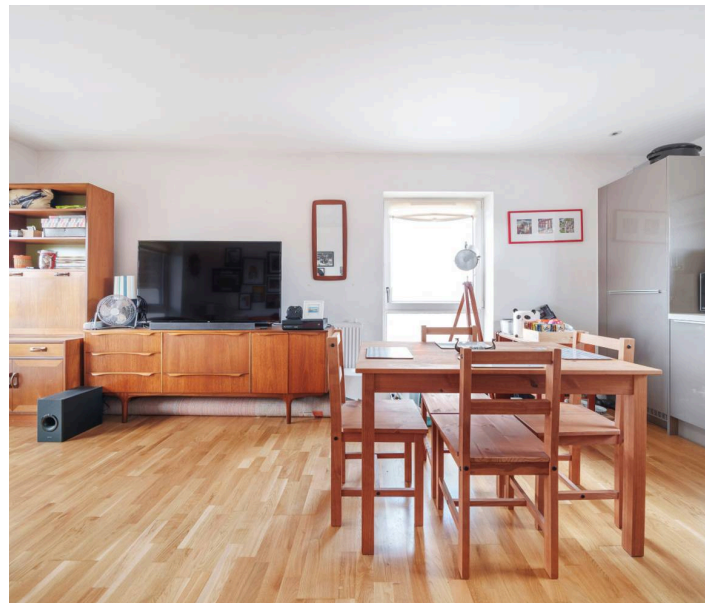


Key Features & Description

- Stunning top floor apartment
- Sought after development
- Close to station & amenities
- Open plan living
- Double bedroom
- 118 year lease

A stylish top-floor one-bedroom apartment in the popular Amber Court, Arla Place development. Featuring a private balcony, open-plan kitchen/lounge/diner, modern kitchen with some integrated appliances, and a spacious bedroom with fitted wardrobes. A contemporary bathroom completes the accommodation.

The property benefits from allocated parking, secure communal entrance, and stairs to the upper floors. Located just a short walk to South Ruislip's shops, Central & Chiltern Line stations, cinema, restaurants, and a 24-hour gym.



Presented with care by Lawrence Rand - helping you find the place you'll love to call home.



Nearest Stations

South Ruislip Station- Approx 0.1 miles

Ruislip Gardens- Approx 0.5 miles

Ruislip Manor- Approx 1.2 miles

Verified Material Information:

Tenure: Leasehold

Length of Lease: 118 years

Service charge yearly: TBC

Ground Rent: TBC

Local authority: Hillingdon

Council tax band: C

Suppliers:

Electricity supply: Mains, Water supply: Mains
water, Sewerage: Mains

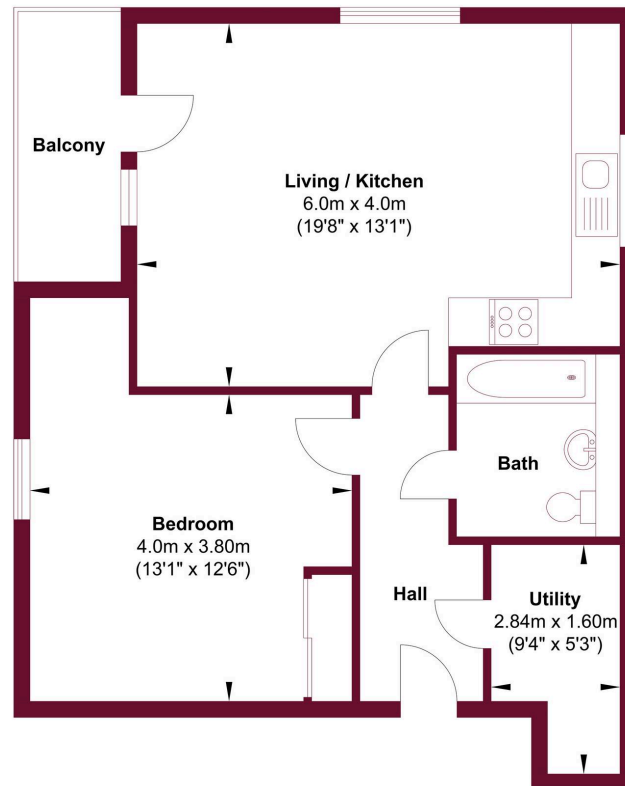
Heating: Gas

Broadband & mobile coverage:

Broadband: FTTP (Fibre to the Premises)

Mobile coverage: O2 - Excellent, Vodafone -
Excellent, Three - Excellent, EE - Excellent





This floor plan is for illustrative purposes and layout guidance only. It is not drawn to scale. Dimensions should not be used for carpet or flooring sizes and are not intended to form part of any contract.

Lawrence Rand

51 Victoria Road, Ruislip - HA4 9BH

01895 632211

sales@lawrence-rand.co.uk

www.lawrence-rand.co.uk/

Lawrence Rand Limited has made every reasonable effort to ensure the accuracy of the information provided. However, we accept no responsibility for errors, omissions, or misstatements. All measurements, distances, and descriptions are approximate and for guidance only. Prospective purchasers or tenants must verify all details independently. Some images may include AI-generated virtual staging to illustrate the potential of the property and are for visual guidance only. No warranty is given or implied, and these particulars do not form part of any offer or contract. Lawrence Rand reserves the right to amend or withdraw any property without notice.