



Glenthams Road, SW13

£775,000

3 1 1 D

- Three Bedrooms
- Separate Living Room

- Upper Maisonette
- Excellent Local Schools

- No Onward Chain
- Private Rear Garden





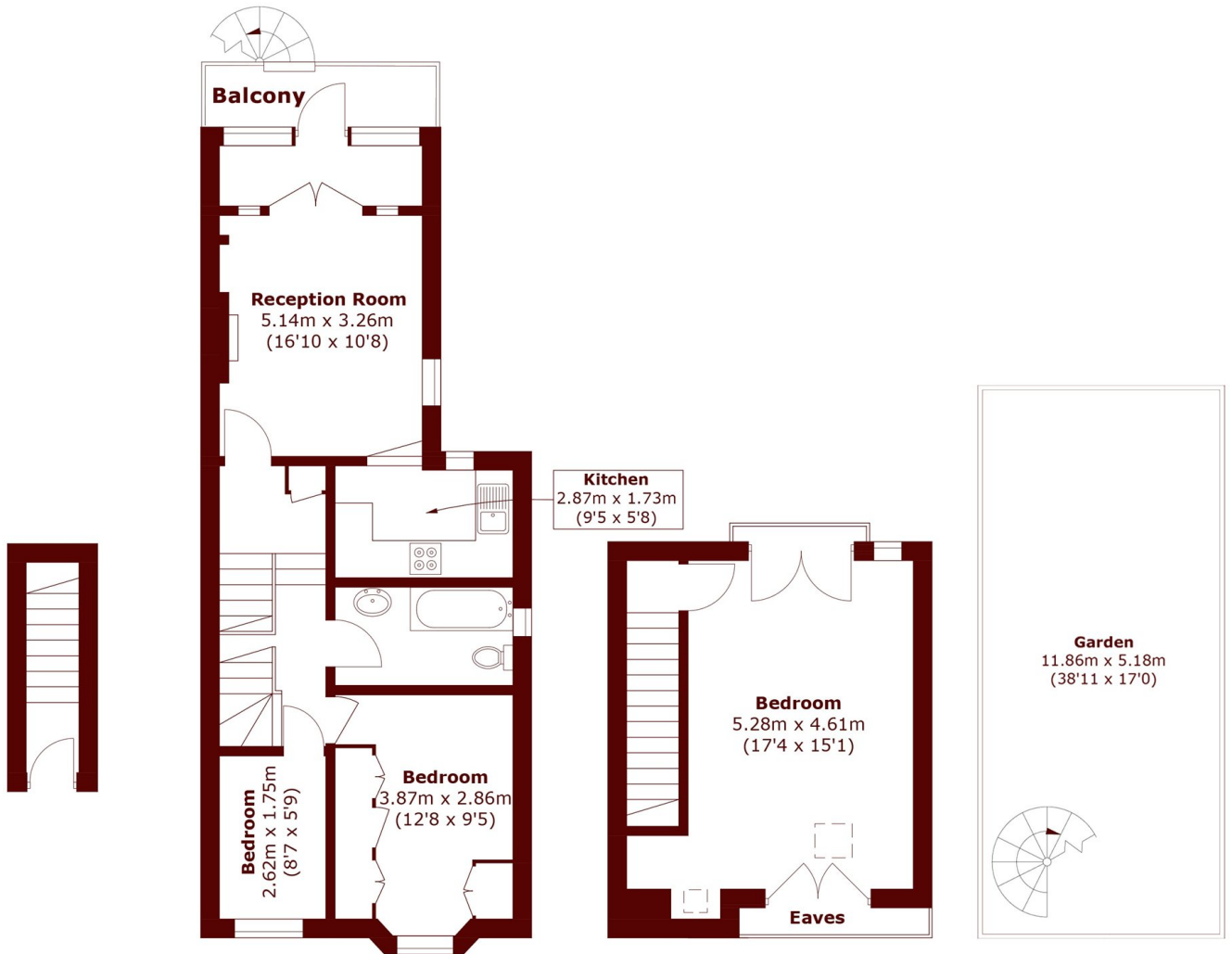
ABOUT THE PROPERTY

An attractive period three bedroom upper maisonette neatly situated on a quiet no through road, close to the River Thames and The Hammersmith Bridge.

This spacious (approaching 1000 square feet) and well-presented end-terrace property is accessed via a private entrance, and has stairs leading up to the first floor where the accommodation is arranged to provide two bedrooms at the front of the property, a stylish modern kitchen and bathroom, with a large living/ dining room that flows nicely into a garden room at the rear of the property. The primary bedroom is on the second floor and is exceptionally light and spacious with ample eaves storage and a Juliet balcony that offers some lovely views at the rear. There is access from the rear down to a large private garden that is mostly laid to lawn and has a paved terrace.

Local shops and amenities can be found on nearby Castelnau, whilst a wider range can be found over the bridge in Hammersmith. Local schools include The St Pauls School, The Harrodian and The Swedish School to name a few. Hammersmith Station is within walking distance, which offers excellent transport links into the city.





Total area (approx.): 80.1 sq. m (862.0 sq. ft)
(Including Indoor Balcony / Excluding Eaves)
Garden area (approx.): 62.6 sq. m (673.8 sq. ft)
Balcony area (approx.): 2.0 sq. m (21.5 sq. ft.)

Marsh & Parsons Barnes
73-75 Church Road, London,
SW13 9HH
020 8563 8333

We aim to make our particulars both accurate and reliable. However, they are not guaranteed; nor do they form part of an offer or contract. If you require clarification on any points then please contact us, especially if you're traveling some distance to view. Please note that appliances and heating systems have not been tested and therefore no warranties can be given as to their good working order.