



Tremadoc Road, SW4

£3,500 Per calendar month

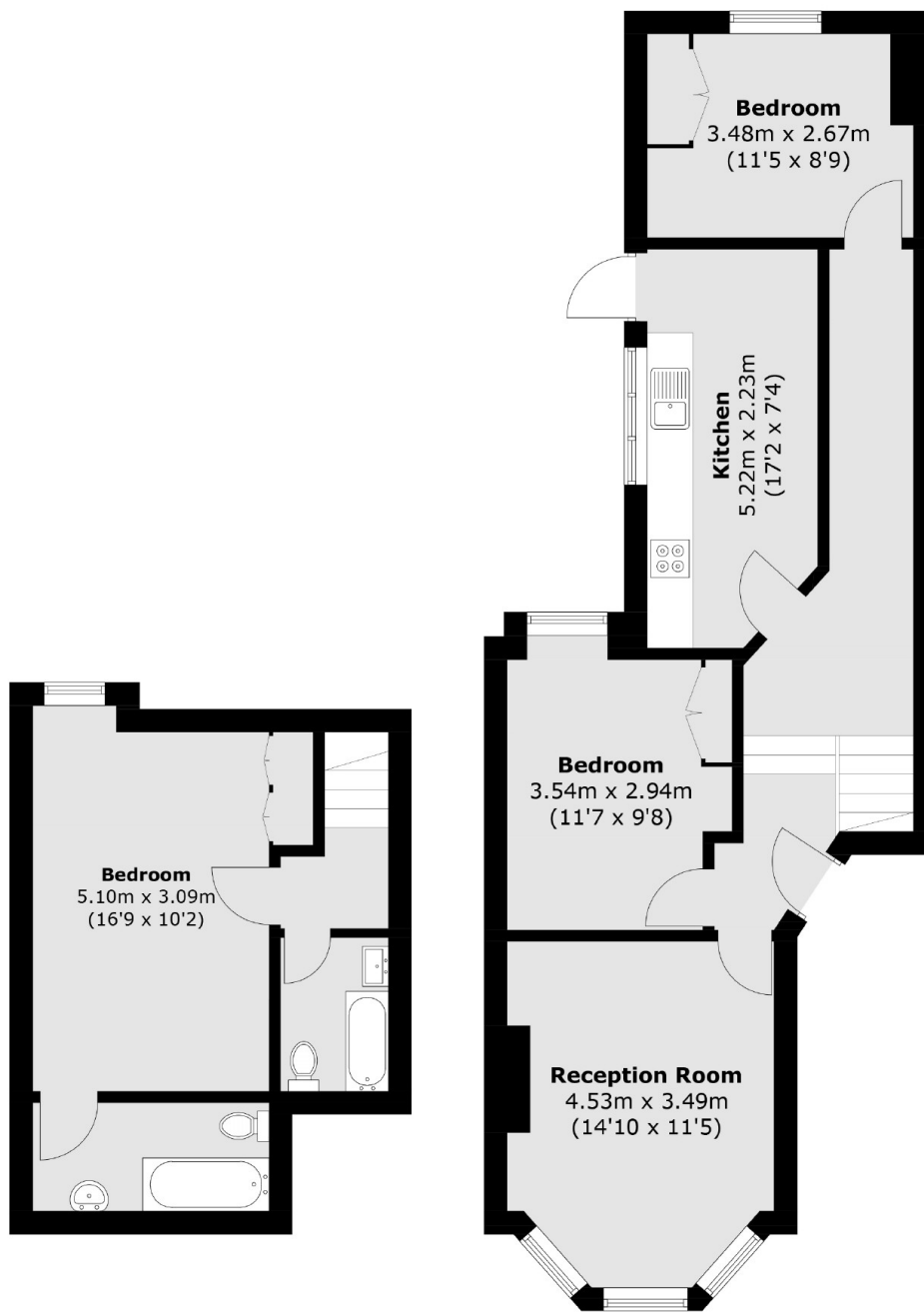
A split-level three bedroom property with a reception room, eat-in kitchen, two bathrooms and a private garden. Ideal for a group of professionals looking for plenty of space.

With the ever busy Clapham High Street almost on your doorstep and fantastic transport links into the City, Tremadoc Road is perfect for young professionals.

Features

- Three Double Bedrooms
- Reception Room
- Separate Kitchen
- Two Bathrooms
- Split-Level
- Private Garden

Tremadoc Road, London, SW4



Basement

Ground Floor

Total area (approx.): 88.2 sq. m (949.4 sq. ft)
(Including Basement)