

2 MILL RACE
GLASSHOUSES
HG3 5AH



NICHOLLS
TYREMAN



2 MILL RACE | GLASSHOUSES | HG3 5AH

A magnificent opportunity to purchase this stone built two bedroom mews conversion forming part of the stunning Glasshouses Mill Development. Located within this enviable Nidderdale Village close to Pateley Bridge and only a short distance from Harrogate.

Entrance Hall | Living Dining Kitchen

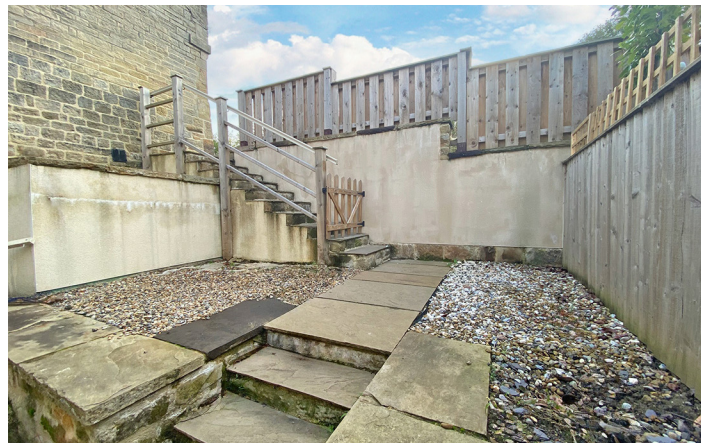
Two Bedrooms | House Bathroom | Store

Private Courtyard | Parking

Council Tax: C | Energy Rating: E | Tenure: Freehold

Agent's Note - There is an estate management fee of £800 per annum.

£239,995





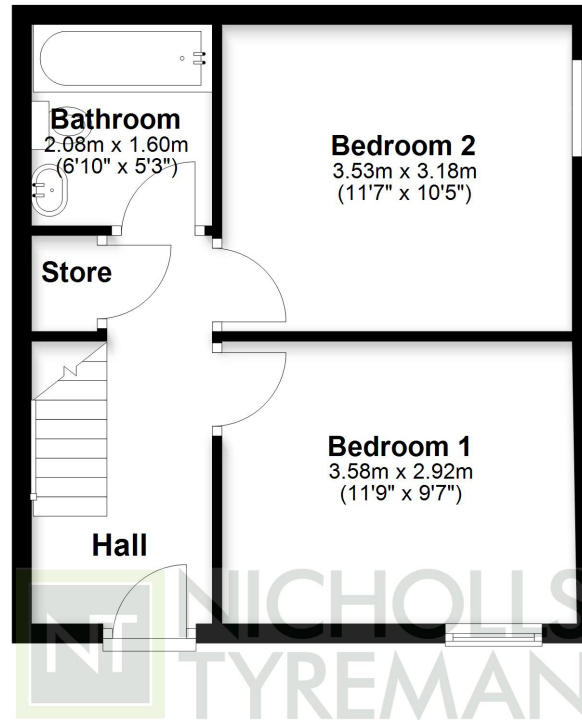
The property has been designed within a contemporary style and finished to an extremely high standard, it would be an ideal home 'lock up and leave' or rental property.

The accommodation on the ground floor comprises; an entrance hall, two double bedrooms and fully tiled bathroom. The staircase leads to the first floor accommodation which comprises a large open plan living dining kitchen with feature glazed walls, exposed beams and high-quality fittings.

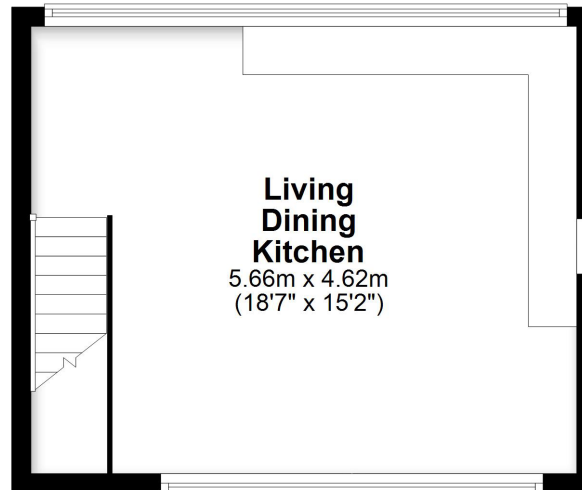
The property is approached via stone steps leading to a gravel and flagged enclosed courtyard. It also has the benefit of an external tap, electric car charging point and parking space.



Ground Floor



First Floor



This plan is for illustrative purposes only and is not to scale.
All measurements are approximate
Plan produced using PlanUp.



9 Albert Street, Harrogate
North Yorkshire HG1 1JX
Sales: 01423 503076 Lettings: 01423 530744

WWW.NICHOLLSTYREMAN.COM

These particulars are given as guidance only and are expressly excluded from any contract. They give no warranty as to the condition or description and any recipient must satisfy himself on all matters stated herein. The property is offered subject to contract and to its being unsold and unlet. Appointments for viewing and contract of all negotiations shall be through Nicholls Tyreman Estate Agent.