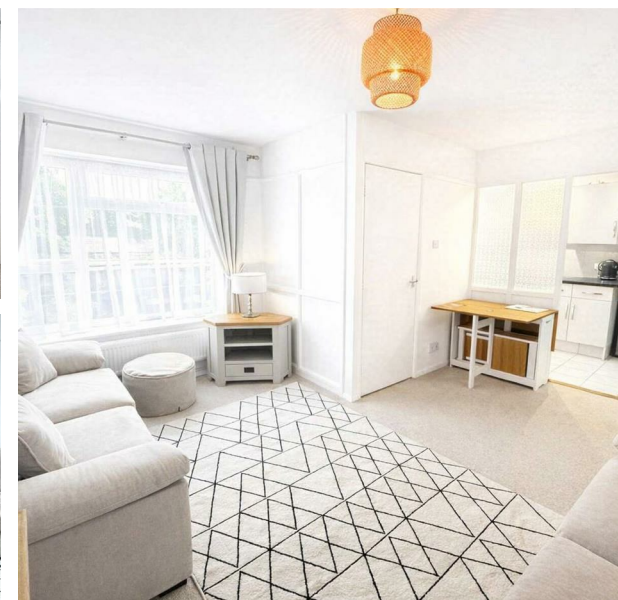


22a Knights Close, Eaton Bray, Dunstable, Bedfordshire, LU6
2DS
£1,200 PCM

ROBINSONS



AVAILABLE TO MOVE IN ON 1ST JUNE – AN IMMACULATE, BRIGHT AND AIRY TWO BEDROOM FIRST FLOOR FLAT IN KNIGHTS CLOSE, EATON BRAY, OFFERED FULLY FURNISHED AND READY TO MOVE STRAIGHT INTO, WITH ALL FURNITURE TO REMAIN.

This beautifully presented first floor flat is tucked away in a quiet cul de sac in the highly sought after village of Eaton Bray. Offering generous, light filled living spaces, the property has been tastefully furnished to a high standard throughout, with all furniture included in the tenancy.

The spacious lounge features a new sofa and a stylish electric feature fire, creating a cosy and inviting space ideal for relaxing or entertaining. The master bedroom includes a mattress, wardrobe, bedside tables, and a wall mounted vanity mirror with built in lighting, complemented by a matching dressing table, all of which will remain in the property.

The modern fitted kitchen provides plenty of storage and workspace, while both bedrooms are well proportioned and in excellent condition, offering ample storage for everyday living, with furnishings included as part of the let.



20 West Street
Dunstable
Bedfordshire
LU6 1SX
01582 661112
sales@robinsons-estates.co.uk
<https://www.robinsons-estates.co.uk>

