



CORAL HOUSE

5 Lutyens Drive, Overstrand, NR27 0FL

£600,000

Freehold

CORAL HOUSE

5 Lutyens Drive,
Overstrand, NR27 0FL

£600,000

- Detached coastal home in the heart of Overstrand
- Four bedrooms, including a principal en-suite
- Spacious kitchen/ dining room and elegant sitting room
- Landscaped enclosed garden with sunny terraces
- Walking distance to the beach, village amenities and coastal paths
- Off-road parking and detached garage





Coral House is the kind of home that makes coastal living feel effortless. Set within a peaceful cul-de-sac in the sought-after village of Overstrand, just a short stroll from the beach, it offers beautifully balanced accommodation designed for gathering family and friends while embracing the slower pace of life that North Norfolk is known for. Bright, spacious interiors flow from an elegant sitting room with a warming gas fire to a generous kitchen and dining space made for everything from leisurely breakfasts to evenings spent entertaining. Outside, the landscaped rear garden provides a private haven, with mature planting, expansive lawns and sunny terraces inviting long afternoons outdoors.

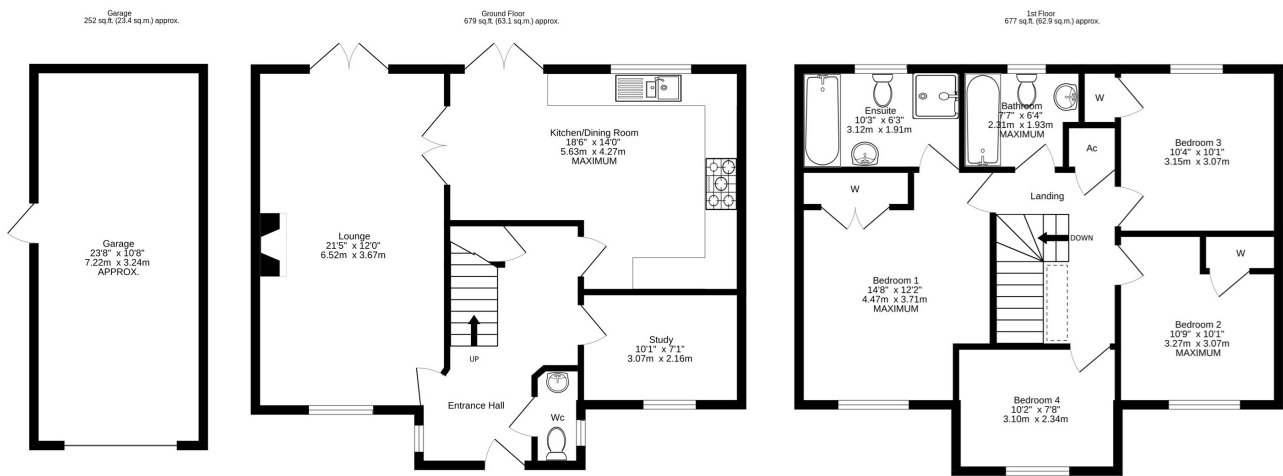
Arranged across four well-proportioned bedrooms, including a luxurious principal suite with en-suite bathroom, Coral House comfortably accommodates both everyday family life and visiting guests. Thoughtfully presented throughout, the property combines contemporary finishes with timeless styling, creating spaces that feel equally welcoming in every season. Whether returning from a walk along the coastline or simply enjoying a quiet morning overlooking the garden, every room has been designed with comfort and ease in mind.

Overstrand remains one of North Norfolk's most cherished coastal villages, where sandy beaches, cliff-top walks, a traditional village pub and local café are all within easy reach. Cromer is just moments away, while the wider coastline, from Sheringham to Blakeney and Wells-next-the-Sea, offers endless opportunities to explore. Beautifully positioned and impeccably presented, Coral House is more than a home by the sea - it's an opportunity to enjoy one of Norfolk's most desirable coastal lifestyles.









TOTAL FLOOR AREA : 1607 sq.ft. (149.3 sq.m.) approx.

Services connected: Mains water, electricity, gas and drainage.

Council Tax: Band D.

Energy Efficiency Rating: Band B.

Tenure: Freehold.

Location: What3words – ///giggled.taxed.whizzed

Agent's note: Service charge of £195pa for the common areas of the estate.

15 West Street, Cromer, Norfolk, NR27 9HZ

01263 511111 • hello@henleyshomes.co.uk • henleyshomes.co.uk

These particulars and measurements whilst believed to be accurate, are set out as a general outline only for guidance and do not constitute any part of an offer or contract. Intending purchasers should not rely on them as statements of representation of fact, but must satisfy themselves by inspection or otherwise as to their accuracy. No person in this firm's employment has the authority to make or give representation or warranty in respect of the property.

