



67, Plover Crescent, Harlow

CM17 0RZ

Asking Price £235,000



stevenoates.com



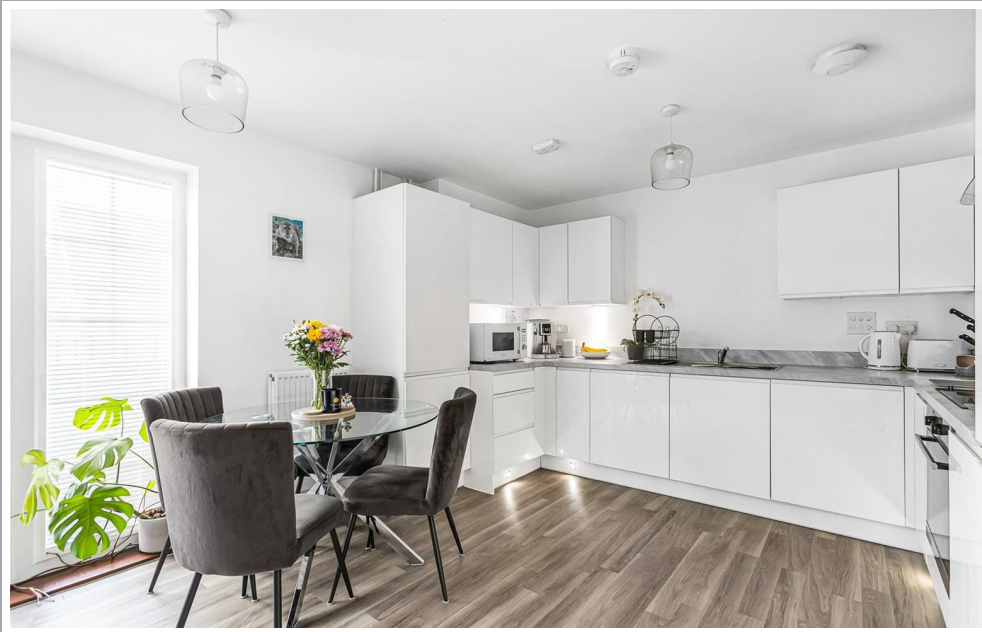
67 Plover Crescent, Harlow, Essex, CM17 0RZ

Nestled in the desirable Plover Crescent, this exceptionally well-presented one-bedroom apartment offers a perfect blend of modern living and comfort. Built approximately three years ago, the property boasts a contemporary design that is both stylish and functional. As you enter, you are greeted by a spacious entrance hallway that provides ample storage space, ensuring that your living area remains clutter-free. The open plan kitchen and living area is a standout feature, creating an inviting atmosphere ideal for entertaining guests or enjoying a quiet evening at home. The kitchen is equipped with modern appliances and sleek finishes and there is a step out balcony with views over Linear Park. The apartment also includes a generously sized bedroom and a luxury bathroom suite designed with relaxation in mind. Additionally, this property comes with allocated parking for one vehicle. With its modern construction and thoughtful layout, this apartment is perfect for first-time buyers, professionals, or those looking to downsize without compromising on quality.

Gilden Park is a collection of stylish modern homes creating an easterly extension to Old Harlow. Situated in the Stort Valley in West Essex, and on the Hertfordshire border. Old Harlow offers a wide range of amenities including a variety of shops, local bars and restaurants and cafes. There are local school, and ample parkland and countryside. Transport links are provided at Harlow Mill train station (approx. 2 miles) with direct rail routes to London Liverpool St, Stanstead Airport, and Cambridge. The M11 is less than 1 miles away at junction 7A. Harlow Town Centre with all its amenities is just 3.5 miles away.



70 Fore Street, Hertford, Hertfordshire, SG14 1BY



70 Fore Street, Hertford, Hertfordshire, SG14 1BY



70 Fore Street, Hertford, Hertfordshire, SG14 1BY



70 Fore Street, Hertford, Hertfordshire, SG14 1BY

Approximate Gross Internal Area 533 sq ft - 50 sq m



First Floor



Floor plan produced in accordance with RICS Property Measurement 2nd Edition. Although Pink Plan Ltd ensures the highest level of accuracy, measurements of doors, windows and rooms are approximate and no responsibility is taken for error, omission or misstatement. These plans are for representation purposes only and no guarantee is given on the total square footage of the property within this plan. The figure icon is for initial guidance only and should not be relied on as a basis of valuation.



These particulars, whilst believed to be accurate are set out as a general outline only for guidance and do not constitute any part of an offer or contract. Intending purchasers should not rely on them as statements of representation of fact, but must satisfy themselves by inspection or otherwise as to their accuracy. No person in this firm's employment has the authority to make or give any representation or warranty in respect of the property.



stevenoates.com