



## MARSHAM STREET, SW1P

£1,500 per week

Three double bedrooms  
Cinema room  
Split level  
Private underground parking  
Gym  
Energy rating: c

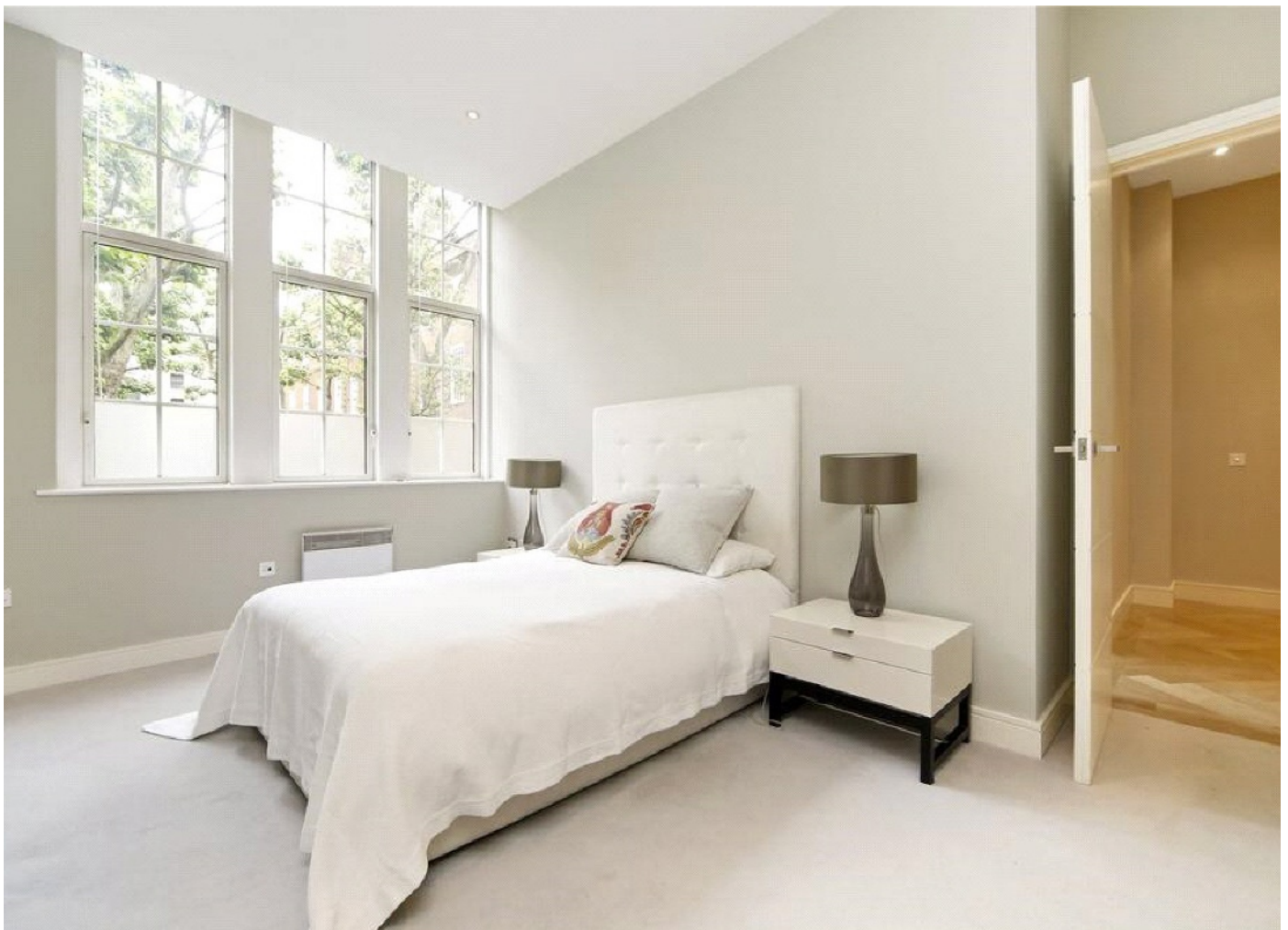
@marshandparsons  
marshandparsons.co.uk

MARSH &  
PARSONS

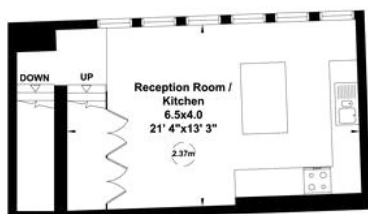


# ABOUT THE PROPERTY

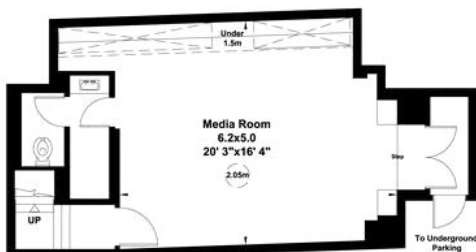
A stunning apartment split over three floors in this sought after development in the heart of Westminster. The property comprises the majority of living space sprawling over the ground floor with stunning reception room flooded with natural light, principal bedroom with en suite and walk in wardrobe, two further double bedrooms (one with en suite), a further third family bathroom and a separate utility room with separate washer and dryer. Downstairs there is a separate immaculately presented kitchen with integrated appliances. There is also a cinema room with additional WC and which provides direct access to the secure underground parking which is included with the apartment. The property further benefits from a 24-hour concierge and on site gym (online



# STEP INSIDE MARSHAM STREET



Lower Ground Floor



Basement

## Romney House, Marsham Street, SW1

Gross internal area (approx.)  
182 Sq m (1959 Sq ft)  
For identification only, Not to Scale

Floor Plan by **capital group** 020 8671 7722



Ground Floor

**Pimlico & Westminster**  
020 7828 8100

Energy Rating: We aim to make our particulars both accurate and reliable. However, they are not guaranteed; nor do they form part of an offer or contract. If you require clarification on any points then please contact us, especially if you're traveling some distance to view. Please note that appliances and heating systems have not been tested and therefore no warranties can be given as to their good working order

**MARSH &  
PARSONS**