



Boydell Court

St. Johns Wood Park, NW8

£5,200 per month
(£1,200 per week)

A spacious three bedroom apartment set in a well presented purpose built block in North St John's Wood close to Swiss Cottage Station.



Boydell Court

St. Johns Wood Park, NW8

- Spacious Apartment
- 3 Bedrooms, 3 Bathrooms, 1 Study
- Lift, Porter
- Close to Swiss Cottage Station

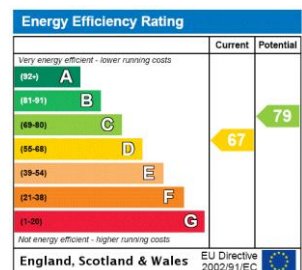


A spacious modern three bedroom apartment set in a well presented purpose built block in North St John's Wood close to Swiss Cottage Station.

The property comprises large reception room, three double bedrooms, two bathrooms (two en suites) and a modern fitted kitchen.

Additional benefits include porter and lift to all floors.

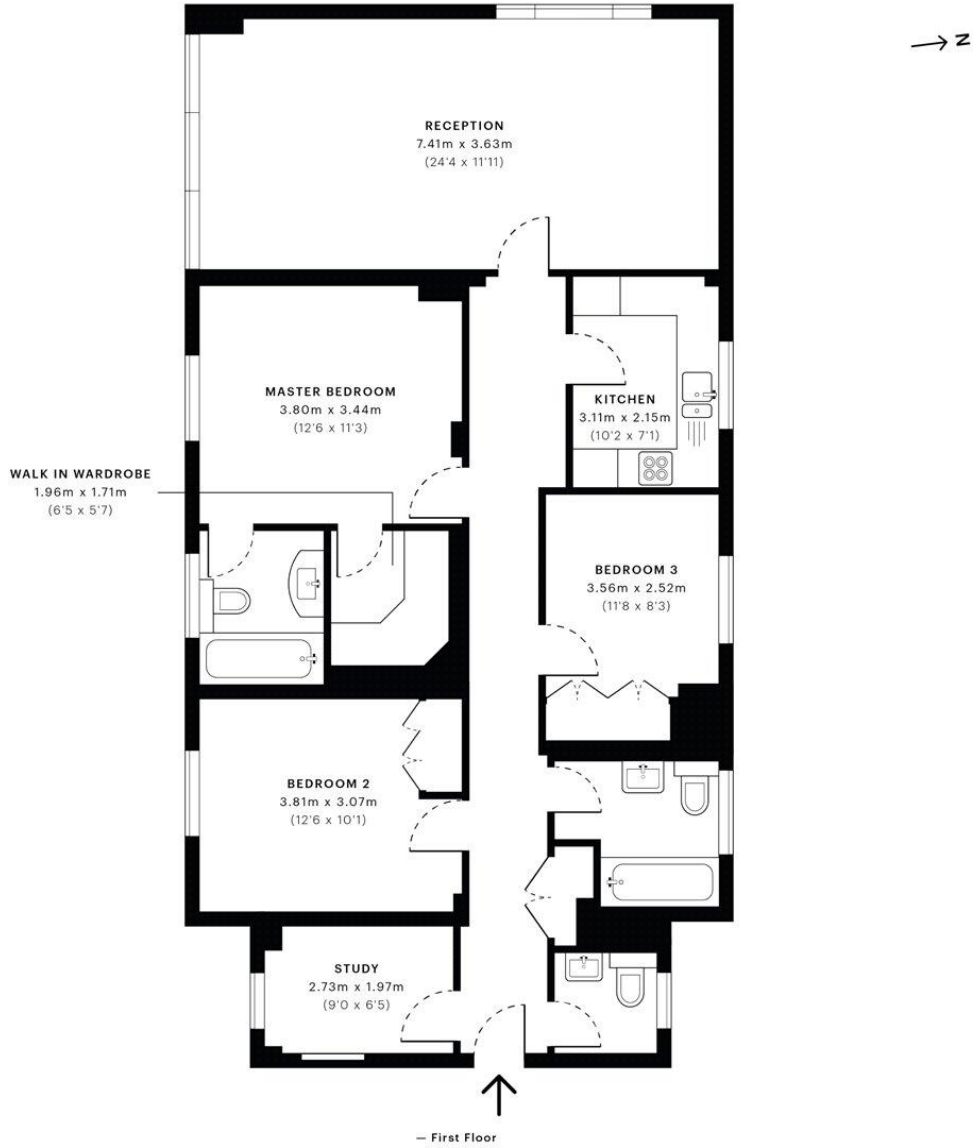
Minimum Term: 6 months
Deposit Required: 5 weeks
Local Authority: Borough of Camden
Council Tax Band: F
EPC Rating: D
Furnished, Part Furnished, Unfurnished



Chestertons St John's Wood Lettings

122 St John's Wood High Street
 St John's Wood
 London
 NW8 7SG
 lettings.stjohnswood@chestertons.com
 02030408622
 chestertons.com

Additional tenant charges apply (fees apply to non-AST tenancies only)
 Tenancy Agreement Fee: £300
 References per Tenant/Guarantor: £60
 Inventory check (approx. £100 – £250 inc. VAT)
chestertons.com/property-to-rent/applicable-fees



GROSS INTERNAL AREA (GIA)
The footprint of the property
107.35 sqm / 1155.51 sqft

NET INTERNAL AREA (NIA)
Excludes walls and external features
Includes washrooms, restricted head height
98.84 sqm / 1063.90 sqft

EXTERNAL STRUCTURAL FEATURES
Balconies, terraces, verandas etc.
0.00 sqm / 0.00 sqft

RESTRICTED HEAD HEIGHT
Limited use area under 1.5 m
0.00 sqm / 0.00 sqft



Spec Verified floor plans are produced in accordance with Royal Institution of Chartered Surveyors' Property Measurement Standards. Plots and gardens are illustrative only and excluded from all area calculations. Due to rounding, numbers may not add up precisely. All measurements shown for the individual room lengths and widths are the maximum points of measurements captured in the scan.

IPMS 3B RESIDENTIAL 110.09 sqm / 1185.00 sqft
IPMS 3C RESIDENTIAL 101.76 sqm / 1095.34 sqft

SPEC ID: 5f104080a7e4df0a3e30c399