



Ramsey Close, Rednal Birmingham B45 0HQ

welcome to

Ramsey Close, Rednal Birmingham

TWO-BEDROOM MID TERRACE HOMECUL-DE-SAC LOCATION***NEAR TO SCHOOLS, AMENITIES, AND TRANSPORT LINKS***PRIVATE ENCLOSED REAR GARDEN***DRIVEWAY AND GARAGE***VIEWING HIGHLY RECOMMENDED***

Agent Note

This property is council tax band A.

Entrance Hall

Stairs to first floor, storage cupboard, doors to kitchen/diner & lounge.

Kitchen/Diner

12' 6" x 11' 5" (3.81m x 3.48m)

Double glazed window too front, ceiling light connection, tiled floor & tiling to splash-back, space for table & chairs, space for fridge freezer, space for large range oven, cooker hood. plumbing for washing machine & dishwasher, space for tumble dryer, sink & drainer, range of wall & base units with worktops over.

Lounge

17' 8" x 10' 2" (5.38m x 3.10m)

Double glazed window & door to rear, laminate flooring, central heating radiator with radiator cover over, coving to ceiling, ceiling light connection.

Landing

Doors to all three bedrooms, bathroom, & separate w/c, storage cupboard.

Bedroom 1

14' 5" x 8' 6" (4.39m x 2.59m)

2 Double glazed windows to front, ceiling light connection, carpet, central heating radiator with radiator cover over.

Bedroom 2

14' 5" x 8' 10" (4.39m x 2.69m)

Double glazed window to rear, ceiling light connection, carpet, central heating radiator.

Bathroom

5' 7" x 5' 7" (1.70m x 1.70m)

Double glazed frosted window, ceiling light connection, central heating radiator with radiator cover over, bath, wash hand basin with storage beneath.

W/C

Double glazed frosted window, ceiling light connection, low level flush w/c, small shelves above/behind w/c.

Front Garden

Block paved path to front door, gravelled area, lawned area, driveway & garage.

Rear Garden

Patio area with small fence and gate, small gate leads through to gravelled area & further patio & decking area, fencing for privacy.

Parking

Garage & Driveway.





check out more properties at shipways.co.uk



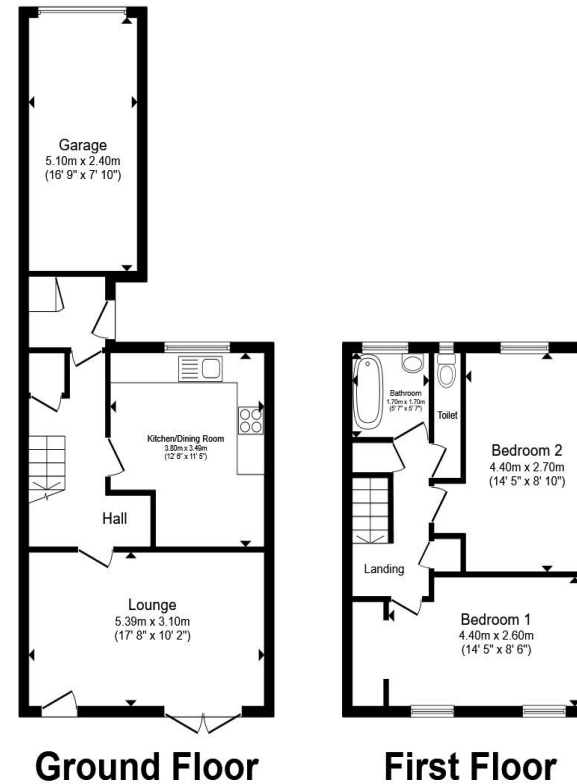
welcome to

Ramsey Close, Rednal Birmingham

- Two-Bedroom Mid Terrace Home
- Perfect for First Time Buyers or Investors
- Near to Local Schools, Transport Links & Amenities
- Driveway and Garage
- Private Enclosed Rear Garden

Tenure: Freehold EPC Rating: D
Council Tax Band: A

£190,000



Total floor area 88.9 m² (956 sq.ft.) approx

This floor plan is for illustrative purposes only. It is not drawn to scale. Any measurements, floor areas (including any total floor area), openings and orientation are approximate. No details are guaranteed, they cannot be relied upon for any purpose and they do not form part of any agreement. No liability is taken for any error, omission or misstatement. A party must rely upon its own inspection(s). Powered by www.propertybox.io



check out more properties at shipways.co.uk



Property Ref:
HBN112217 - 0002

1. MONEY LAUNDERING REGULATIONS Intending purchasers will be asked to produce identification documentation at a later stage and we would ask for your co-operation in order that there is no delay in agreeing the sale. 2. These particulars do not constitute part or all of an offer or contract. 3. The measurements indicated are supplied for guidance only and as such must be considered incorrect. Potential buyers are advised to recheck measurements before committing to any expense. 4. We have not tested any apparatus, equipment, fixtures or services and it is in the buyers interest to check the working condition of any appliances. 5. Where an EPC, or a Home Report (Scotland only) is held for this property, it is available for inspection at the branch by appointment. If you require a printed version of a Home Report, you will need to pay a reasonable production charge reflecting printing and other costs. 6. We are not able to offer an opinion either written or verbal on the content of these reports and this must be obtained from your legal representative. 7. Whilst we take care in preparing these reports, a buyer should ensure that his/her legal representative confirms as soon as possible all matters relating to title including the extent and boundaries of the property and other important matters before exchange of contracts.

Shipways is a trading name of Sequence (UK) Limited which is registered in England and Wales under company number 4268443, Registered Office is Cumbria House, 16-20 Hockliffe Street, Leighton Buzzard, Bedfordshire, LU7 1GN. VAT Registration Number is 500 2481 05.

Not for marketing purposes INTERNAL USE ONLY



0121 427 3264



harborne@shipways.co.uk



172 High Street, Harborne, BIRMINGHAM,
West Midlands, B17 9PP



shipways.co.uk