



Marlborough Road, TW10

£3,400 Per calendar month

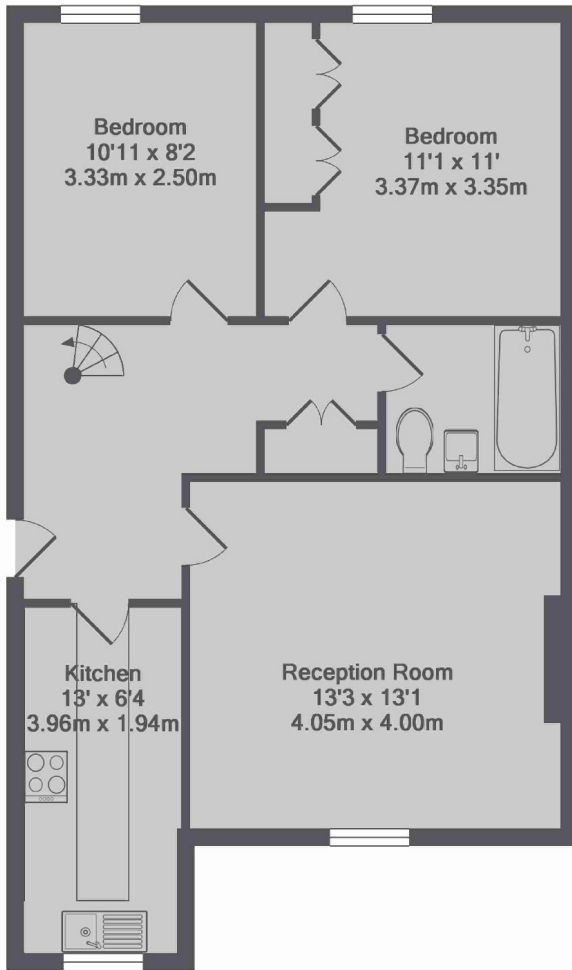
A very impressive split level three double bedroom Victorian conversion flat. The flat has been finished to a high standard for those that value stylish interiors, has a large living room with fireplace, separate modern kitchen and two bathrooms.

Close to the lovely shops, cafes and pubs on Richmond Hill and Richmond Park, but still very well positioned for a stroll to Richmond train station and town centre. This location offers everything needed for sunny days and lively evenings.

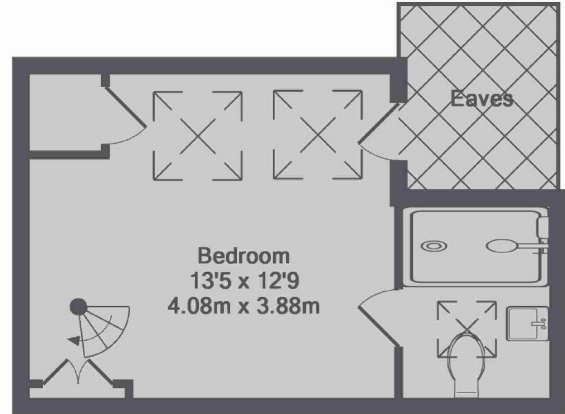
Features

- Three Double Bedrooms
- Split Level
- Modern Kitchen
- Two Bathrooms
- Wooden Floors
- Richmond Hill

Marlborough Road, Richmond, TW10



2nd Floor
Approx. Floor
Area 664 Sq.Ft.
(61.7 Sq.M.)



3rd Floor
Approx. Floor
Area 226 Sq.Ft.
(21.0 Sq.M.)

Marlborough Road, TW10
Total Approx. Floor Area 890 Sq.Ft. (82.7 Sq.M.)
Made with Metropix ©2016