



HOLFORD WAY, SW15

£650,000

Penthouse flat
Private roof terrace
Two bedrooms
Two bathrooms
Underground parking
Gym

@marshandparsons
marshandparsons.co.uk

MARSH &
PARSONS



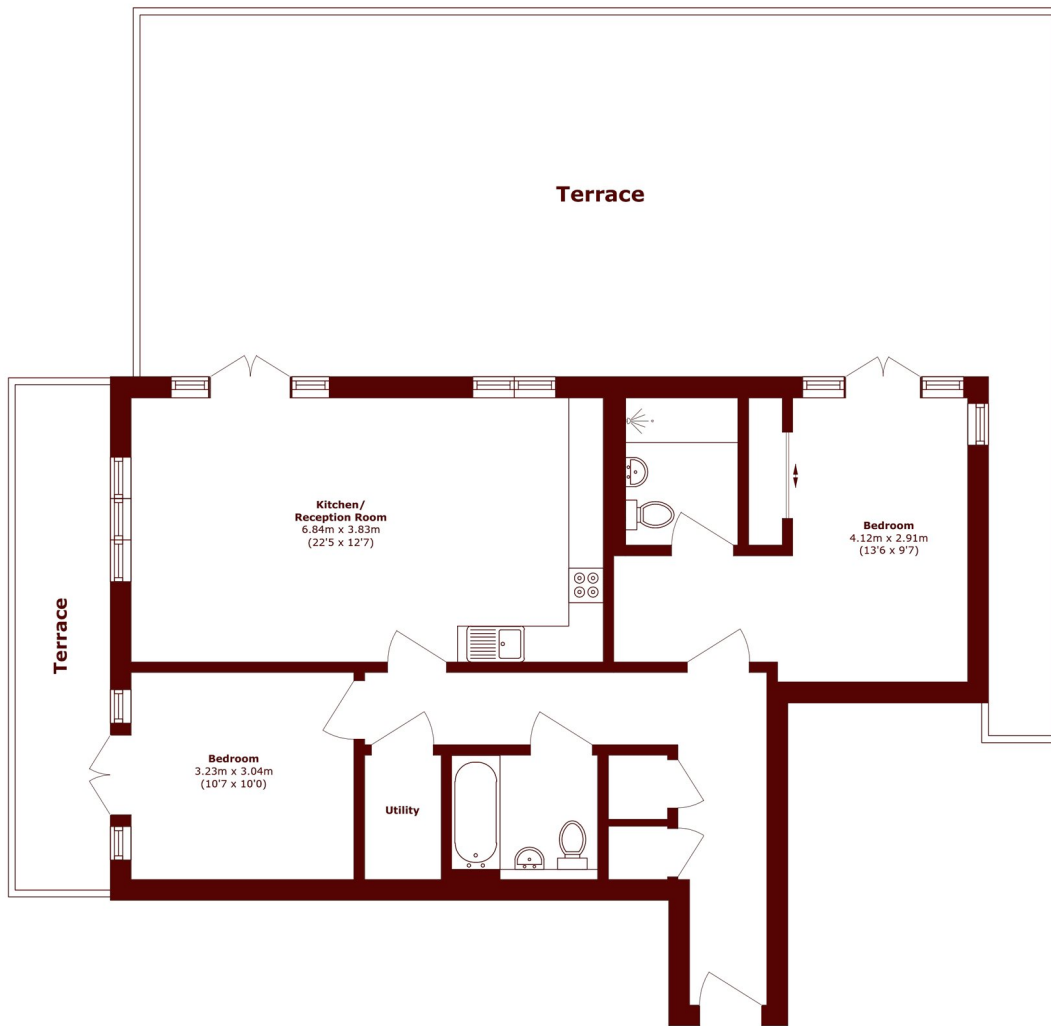
ABOUT THE PROPERTY

A truly stunning property set on the top floor offering views over Richmond Park.

Queen Mary's Place development is a combination of modern new build apartments and houses. These homes enjoy a superb location in South West London, set within easy reach of Putney, Wimbledon Common, Barnes Station and beautiful Richmond Park.



STEP INSIDE HOLFORD WAY



Total area (approx.): 78.3 sq. m (842.8 sq. ft)
Terrace area (approx.): 101 sq. m (1087.1 sq. ft)

Barnes & East Sheen
020 8563 8333

Energy Rating: C We aim to make our particulars both accurate and reliable. However, they are not guaranteed; nor do they form part of an offer or contract. If you require clarification on any points then please contact us, especially if you're traveling some distance to view. Please note that appliances and heating systems have not been tested and therefore no warranties can be given as to their good working order

**MARSH &
PARSONS**