



Guide Price
£195,000

Leasehold

2x  1x  1x 

**Pioneer Court,
Overcliffe, Gravesend,
Kent, DA11**

Wards
Helping you move forwards



Main features

- Long lease
- Walking distance to Gravesend town centre and train station
- Ideal first time buy
- Ideal location for everyday essentials
- Offered for sale with no forward chain

Accommodation

THIRD FLOOR

Entrance Hall

Lounge: 15'3 x 13'2 (4.65m x 4.02m)

Kitchen : 10'8 x 8'6 (3.25m x 2.59m)

Bedroom 1: 17'0 x 8'3 (5.19m x 2.52m)

Bedroom 2: 15'11 x 8'10 (4.85m x 2.69m)

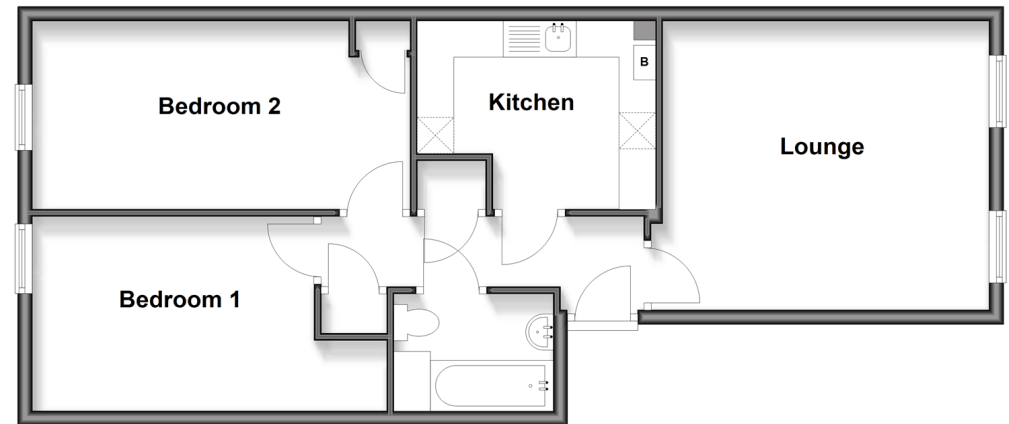
Bathroom: 7'1 x 5'2 (2.16m x 1.58m)

OUTSIDE

1 Allocated Parking Space

Third Floor

Approx. 62.9 sq. metres (677.4 sq. feet)



Call Gravesend - 01474 352417 ■ wardsof Kent.co.uk

■ Legal advice should be taken to verify fixtures/fittings, planning, alterations and/or lease details

■ Appliances & services are untested, dimensions are approximate and floor plans are not to scale



11140855/20260310/MM/KG