



96 Jarrom Street,
£214,500

🛏 1 🚿 1 🚗 1



Discover modern urban living in this beautifully presented one-bedroom apartment, ideally situated in the vibrant LE2 7DD area. This contemporary residence offers a comfortable and efficient living space, perfect for those seeking convenience and style.

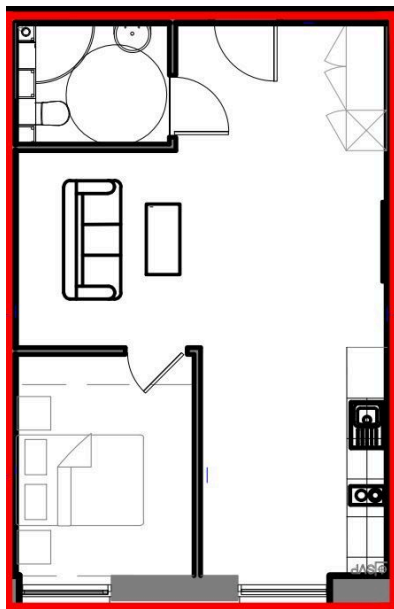
Upon entry, you are welcomed into a thoughtfully designed reception room, providing a bright and inviting space for relaxation or entertaining. The well-laid-out interior flows seamlessly, leading to a modern kitchen area equipped for everyday living. The apartment features a comfortable bedroom, offering a peaceful retreat, complemented by a sleek bathroom designed with functionality in mind.

Benefiting from air conditioning throughout, this property ensures year-round comfort. With a floor area of 495 sq ft, the apartment makes efficient use of its space, providing a practical home within a modern development. Mains electric and water supplies ensure reliable services.

Located in the sought-after LE2 7DD postcode, residents will appreciate easy access to local amenities and transport links, making commuting and daily errands straightforward. This modern property provides an excellent opportunity to secure a well-appointed home in a convenient location.

Arrange a viewing today to experience the appeal of this contemporary apartment.





- Modern one-bedroom apartment
- Beautifully presented interiors
- Modern kitchen area
- Sleek and functional bathroom
- Efficient 495 sq ft layout
- Prime LE2 7DD location
- Bright and inviting reception room
- Peaceful bedroom retreat
- Air conditioning throughout
- Excellent access to local amenities and transport links



30/06/2025, 18:01 Energy performance certificate (EPC) - Find an energy certificate - GOV.UK

Energy performance certificate (EPC)

Apartment 52 The Vera Mitchell Building 54 Windmill Street LEICESTER LE2 7QW	B	Valid until: 29 June 2035 Certificate number: 3535-1936-1000-0780-9276
--	----------	---

Property type: Mid-floor flat
Total floor area: 45 square metres

Rules on letting this property

Properties can be let if they have an energy rating from A to E.

You can read [guidance for landlords on the regulations and exemptions](https://www.gov.uk/guidance/domestic-tenants-entire-property-minimum-energy-efficiency-standard-landlord-guidance) (<https://www.gov.uk/guidance/domestic-tenants-entire-property-minimum-energy-efficiency-standard-landlord-guidance>).

Energy rating and score

This property's energy rating is B. It has the potential to be B.

[See how to improve this property's energy efficiency.](#)

The graph shows this property's current and potential energy rating.

Properties get a rating from A (best) to G (worst) and a score. The better the rating and score, the lower your energy bills are likely to be.

For properties in England and Wales:
the average energy rating is D
the average energy score is 60

Score	Energy rating	Current	Potential
92+	A		
81-91	B	67 B	67 B
69-80	C		
55-68	D		
39-54	E		
21-38	F		
1-20	G		

