



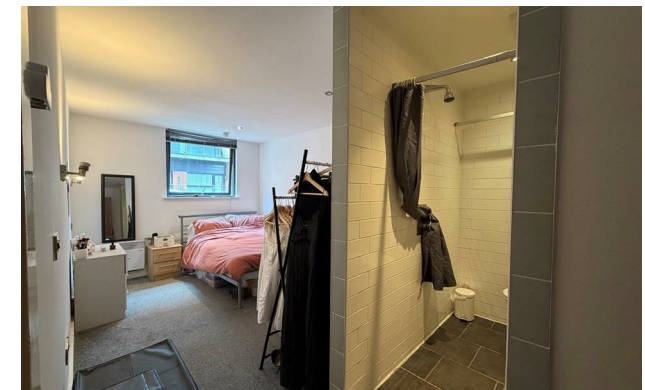
jordan fishwick

Apt 1 Advent 1, 2 Isaac Way, M4 7EP
£950 Per Calendar Month



Advent 1 Ancoats M4 7EP

£950 Per Calendar Month




The Property

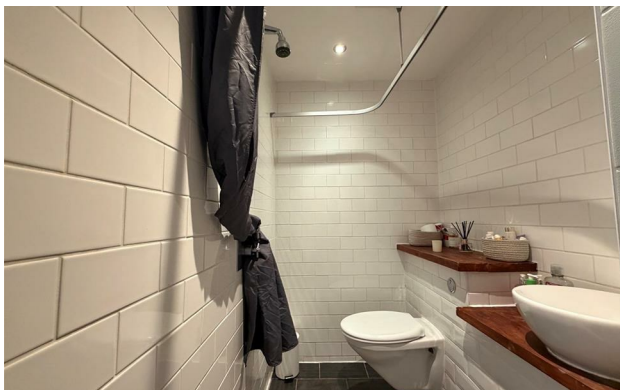
Available End May This ground floor two bedroom apartment has wooden flooring, double glazed windows and is located near the new tram stop in New Islington. The property is generous in size and comprises of entrance hall, large living/kitchen with fitted appliances. Two double bedrooms with the master having a wet room and further three piece bathroom suite. Ancoats is a short distance from the main city centre and is a bustling hub with a local marina with bars, shops and restaurants. The property has been recently redecorated throughout with the benefit of new furniture being installed. EPC Rating D. No Parking. Tax Band C.

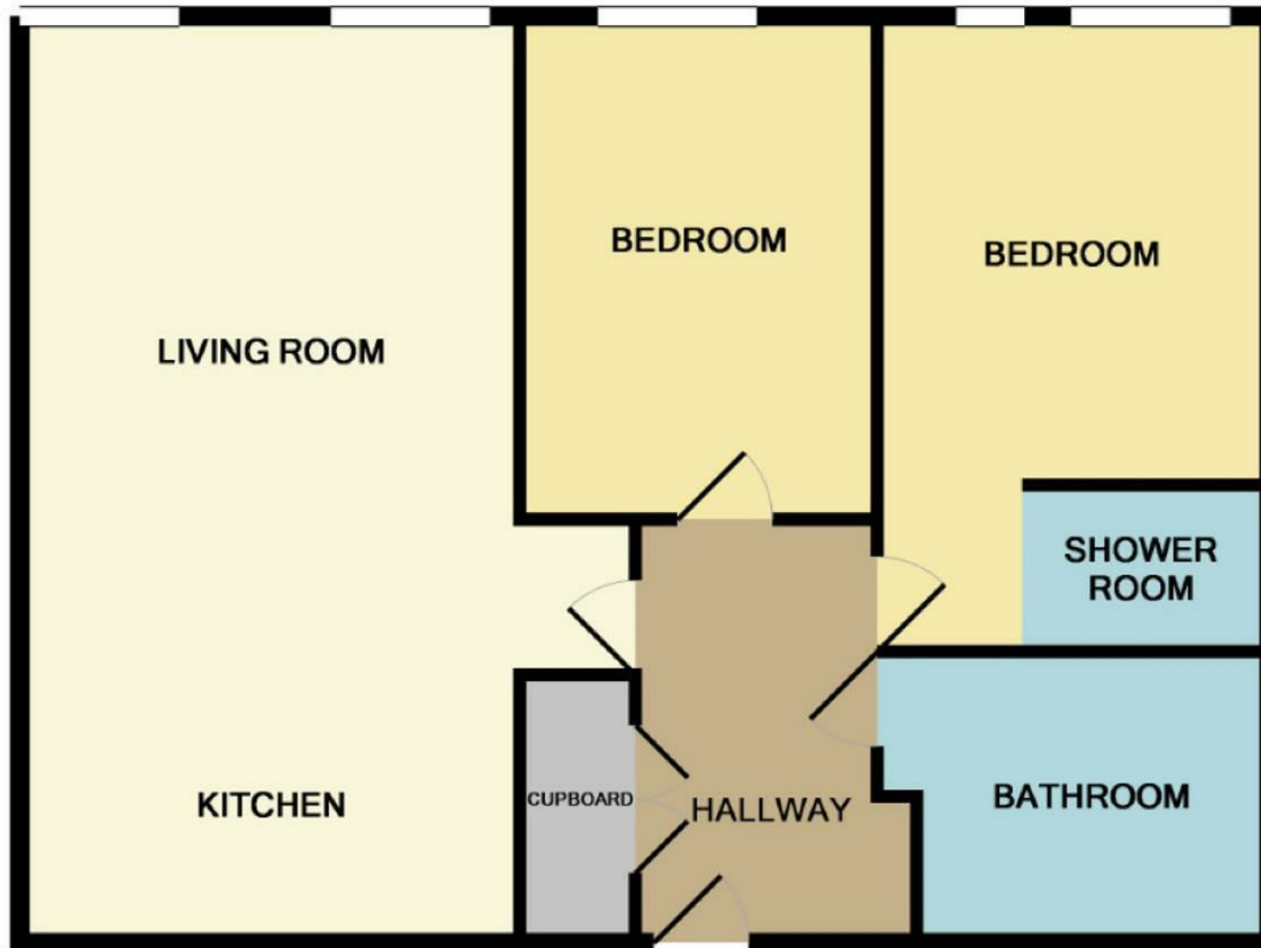
VIDEO/ PHOTO OFFERS NOT ACCEPTED - PLEASE CALL TO BOOK A VIEWING

- Available May
- Two Double Bedrooms
- Ground Floor
- Ancoats Location
- Close to Tram Stop
- Internal Courtyard
- Tax Band C
- EPC rating D



Energy Efficiency Rating		
	Current	Potential
Very energy efficient - lower running costs		
(92 plus) A		
(81-91) B		
(69-80) C		
(55-68) D	67	79
(39-54) E		
(21-38) F		
(1-20) G		
Not energy efficient - higher running costs		
England & Wales	EU Directive 2002/91/EC 	





Measurements are approximate. Not to scale. Illustrative purposes only
Made with Metropix ©2015



These particulars are believed to be accurate but they are not guaranteed and do not form a contract. Neither Jordan Fishwick nor the vendor or lessor accept any responsibility in respect of these particulars, which are not intended to be statements or representations of fact and any intending purchaser or lessee must satisfy himself by inspection or otherwise as to the correctness of each of the statements contained in these particulars. Any floorplans on this brochure are for illustrative purposes only and are not necessarily to scale.

Offices at: Offices at Chorlton, Didsbury, Disley, Hale, Glossop, Macclesfield, Manchester Deansgate, Manchester Whitworth Street, New Mills, Sale, Wilmslow and Withington