



**WHITLOCKS**  
ESTATE AGENTS

St. Thomas Court, Pagham, Bognor Regis

Guide Price £239,000



This beautifully presented two double bedroom apartment offers a superb standard of modern living, ideal for buyers seeking comfort and convenience. A welcoming entrance hall leads to a bright and spacious living room with access to a private balcony, enjoying an open outlook over well-kept communal grounds. The contemporary kitchen features sleek work surfaces and ample storage, with space for dining.

Both bedrooms are generous doubles filled with natural light. The principal bedroom is generously proportioned, while the second bedroom offers flexibility as a guest room or home office. The family bathroom is finished to a high specification with modern fittings.

The property boasts modern décor and plenty of storage throughout, along with double glazing and efficient heating.

Further benefits include a secure entry system and first-come, first-serve off-road parking.

Ideally located close to local amenities and the beach, this apartment is perfect for professionals, small families, or downsizers. Offered in immaculate condition with an onward chain, early viewing is highly recommended.



- Two double bedroom apartment
- Modern fitted kitchen
- Plenty of storage space
- Bright and spacious living area
- Contemporary family bathroom
- Private balcony with open outlook
- Views over well-maintained communal grounds
- Close to local amenities and the beach
- Ideal for first-time buyers, downsizers, or investors

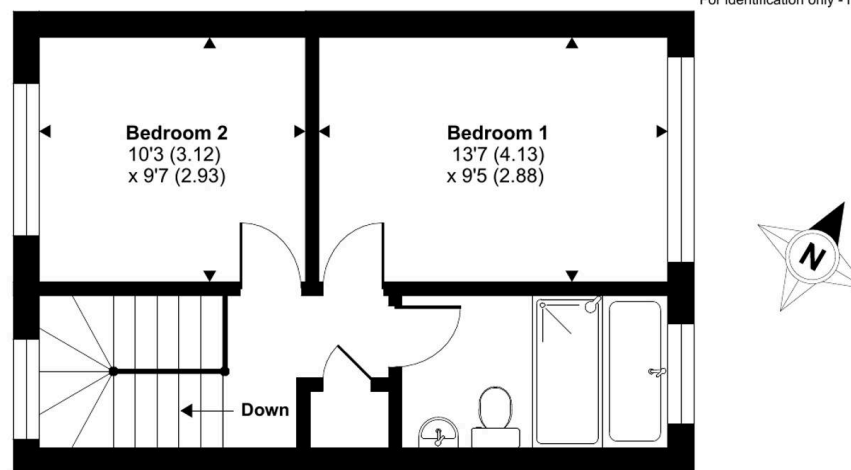
Pagham is a quaint, seaside Village famously known for its quirky railway carriages and holiday makers. Located to the west and away from the hustle of the main resort Town. The Sea Front, Harbour and Nature Reserve offer a variety of walks and wildlife. The Beach area has the added benefit of a Café, Amusements and a Yacht Club and is a short walk away from St Thomas A 'Becket Church. The Shopping Parade consists of a range of amenities including Convenience Stores, a Doctors Surgery, a Chemist, an Opticians, Bus Links to Bognor Regis and Chichester Town Centre and many more. Local 16th and 18th century Pubs can be found nearby in Nyetimber Village less than half a mile away.

Whitlock Estate Agents Limited trading as Whitlocks Estate Agents for themselves and for the vendor or lessors of this property whose agents they are, give notice that (i) these particulars do not constitute any part of an offer or contract, (ii) all statements contained within these particulars are made without responsibility on the part of Whitlocks Estate Agents or the vendor, (iii) whilst made in good faith, none of the statements contained within these particulars are to be relied upon as a statement or representation of fact, (iv) any intending purchasers must satisfy themselves by inspection or otherwise as to the correctness of each of the statements contained within these particulars, (v) the vendor does not make or give either Whitlocks Estate Agents or any person in their employment any authority to make or give representation or warranty whatsoever in relation to this property. Wide angle lenses may be used.

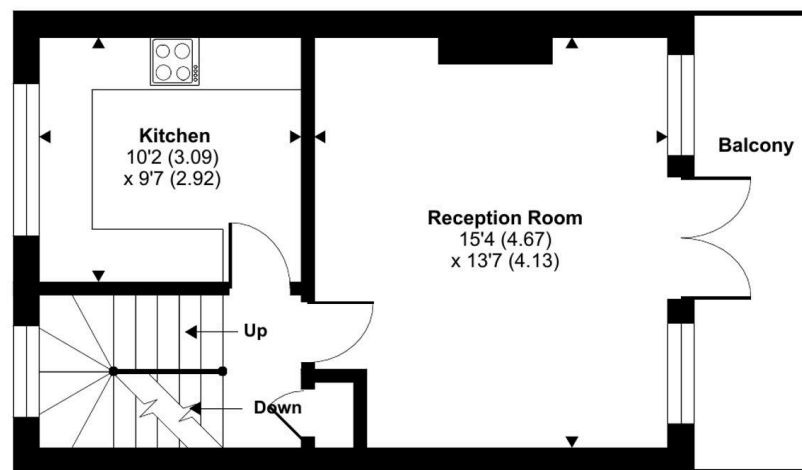
## St. Thomas Court, Bognor Regis, PO21

Approximate Area = 793 sq ft / 73.7 sq m

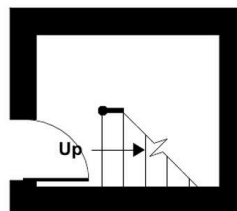
For identification only - Not to scale



SECOND FLOOR



FIRST FLOOR



GROUND FLOOR



Floor plan produced in accordance with RICS Property Measurement 2nd Edition, Incorporating International Property Measurement Standards (IPMS2 Residential), © ncthecom 2026. Produced for Whitlocks Estate Agents. REF: 1446624





## Whitlocks Estate Agents - Bognor Regis & Pagham

Whitlocks Estate Agents, 229 Pagham Road - PO21 3QD

01243 262747 • [sales@whitlocksestateagents.co.uk](mailto:sales@whitlocksestateagents.co.uk) • [whitlocksestateagents.co.uk/](http://whitlocksestateagents.co.uk/)

Council Tax band: B

Tenure: Leasehold

EPC Energy Efficiency Rating: C

EPC Environmental Impact Rating: C