



Highview Road, W13

£625,000

A stunning semi-detached new build set over two floors offering two double bedrooms in an excellent location with no onward chain.

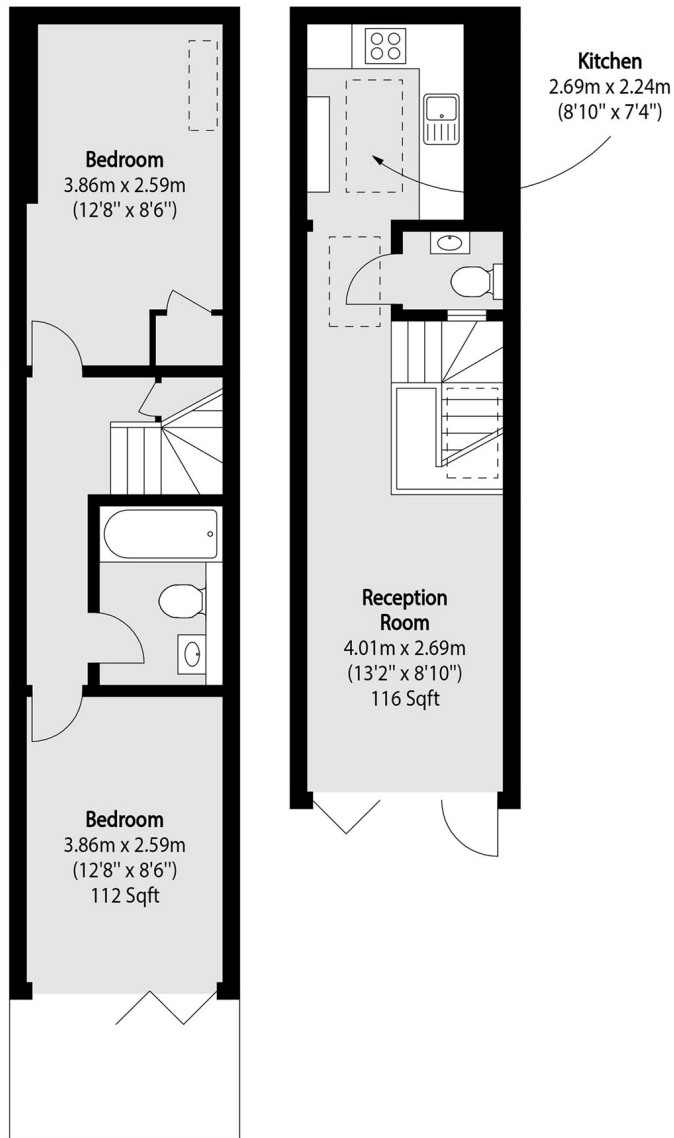


A perfect home for a young professional couple who enjoy easy access to central London, the ground floor offers a bright and spacious reception/dining room and kitchen. The lower ground floor offers two double bedrooms (one with a light filled courtyard) and a family bathroom.

Ideally located for easy access all over London on the Elizabeth Line. Fantastic parks locally including Drayton Green and Pitshanger park.

- Chain Free • New Build • Two Double Bedrooms •
 - Elizabeth Line • Local Parks • Semi-Detached •
-





Lower Ground Floor

Ground Floor

Total area (approx): 60.75 sq m (654 sq. ft)

Robertson Smith & Kempson Ealing Sales
1 The Broadway, London,
W5 2NT
020 8840 7677
ealingsales@robertsonsmithandkempson.co.uk

Energy Rating: B. We aim to make our particulars both accurate and reliable. However they are not guaranteed; nor do they form part of an offer or contract. If you require clarification on any points then please contact us, especially if you're traveling some distance to view. Please note that appliances and heating systems have not been tested and therefore no warranties can be given as to their good working order.